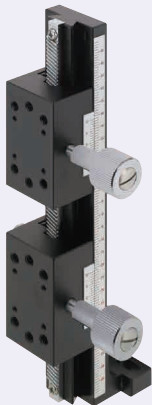
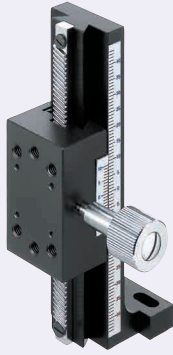


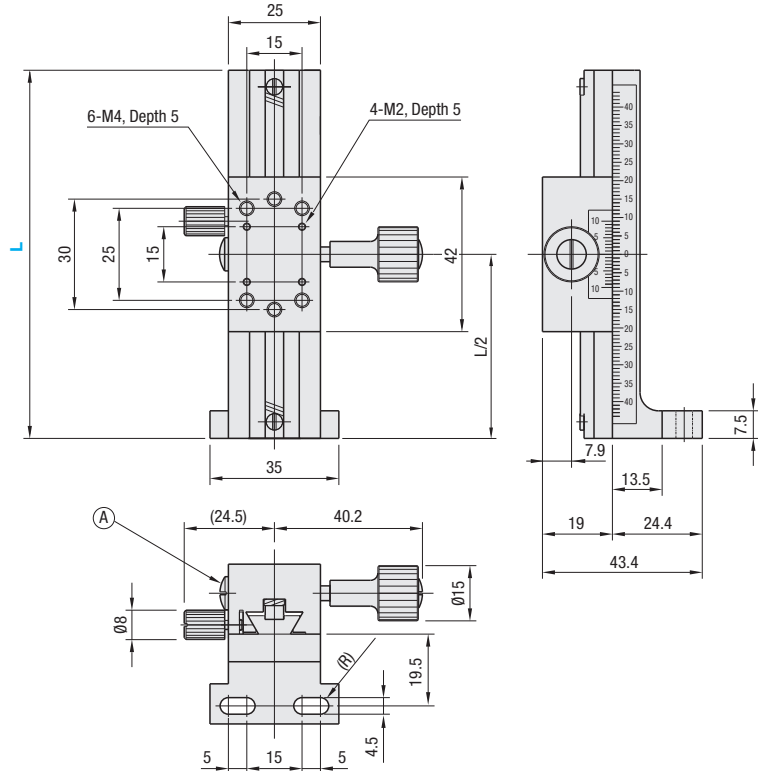
[High Precision] Z-Axis Dovetail Slide, Rack & Pinion Long

Features: Long stroke stages made of lightweight aluminum alloy. Length is selectable in accordance with the stroke required.

Z-Axis, Long



ZLWG (L=50, 70, 100, 150, 150-2)



- ⓘ The scale shown is for L100. Scales will be different for L50, L70, L150, and L150-2.
- ⓘ By turning the preload adjustment screw (A) clockwise with a flathead screwdriver, the stage slides slowly, and by turning counterclockwise the stage slides quickly and smoothly.
- ⓘ See the CAD data for details.

- Ⓜ Material: Aluminum Alloy
- Ⓢ Surface Treatment: Black Anodize
- ⓐ Accessory: CBST4-12 (2 pcs.)

X-Axis P.1904

Standard Stages Similar Products (available for limited sizes only): ZDTLS (P.1955)

Part Number		L	Number of Blocks	Travel Distance (mm)	Travel per Rotation (mm)	Load Capacity (N)	Travel Accuracy Straightness	Weight (kg)	Unit Price
Type	No.								
ZLWG	50	50	1	±15	18	14.7	30µm	0.120	
	70	70	1	±25				0.135	
	100	100	1	±40				0.160	
	150	150	1	±65			40µm	0.215	
	150-2		2	±44				0.285	

ⓘ Resolution (Vernier Scale Indication): 0.1mm/division

ⓘ Knob Cover HDCVR15 (Sold Separately): Dovetail Stage Ø15 knobs can be increased in diameter by installing the cover. P.2004

ⓘ ZLWG150-2 has two blocks. Please note that the stroke distances will be shorter than the one block versions.



Ordering Example

Part Number

ZLWG100