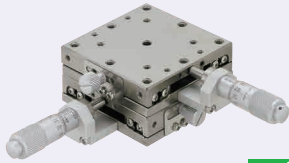


[High Precision] Linear Ball

Symmetrical Stack, Space Saving

■ **Features:** Since two side faces out of four are freely configurable, this type of stage product can be symmetrically aligned with its reserved type for combination use or can be configured for space-saving.

■ Symmetrical Stack, Space Saving



RoHS 10

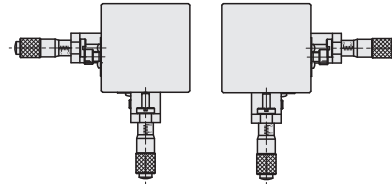
- The number of faces intended for knob / clamp operations is limited to two.
- Space for adjustment is saved
- It is also possible to reposition two stages in such a way that they become much closer to each other.

Black Linear Ball - Micrometer Head

DSXYSGB

(Standard: -A)

(Right / Left Reversed: -AR)

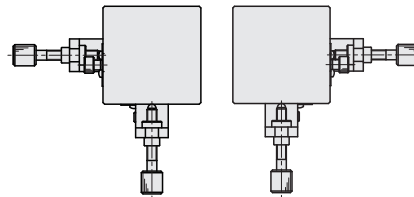


Linear Ball - Feed Screw

DSXYSCG

(Standard: -A)

(Right / Left Reversed: -AR)



📏 For dimension details, see the CAD data or the catalog's X-Axis stage dimension details on **P:1946**

Part Number		Stage Surface (mm)	Travel Distance (mm)	Load Capacity (N)	Stage Configuration		Reference Part Number (Page)	Unit Price	
Type	No.				Top	Bottom		DSXYSGB	DSXYSCG
Black Linear Ball Micrometer Head DSXYSGB Linear Ball Feed Screw DSXYSCG	25-A	25x25	±3.2	38.2	X□□□-AR	X□□□-A	XYSGB□-A (P:1946) XYSCG□-A (P:1946) (Asymmetrical)		
	25-AR				X□□□-A	X□□□-AR			
	40-A	40x40	±6.5	95.2	X□□□-AR	X□□□-A			
	40-AR				X□□□-A	X□□□-AR			
	50-A	50x50	±6.5	144.2	X□□□-AR	X□□□-A			
	50-AR				X□□□-A	X□□□-AR			
	60-A	60x60	±6.5	192.1	X□□□-AR	X□□□-A			
	60-AR				X□□□-A	X□□□-AR			
	70-A	70x70	±6.5	329.6	X□□□-AR	X□□□-A			
	70-AR				X□□□-A	X□□□-AR			
	80-A	80x80	±12.5(*)	255.8	X□□□-AR	X□□□-A			
	80-AR				X□□□-A	X□□□-AR			
100-A	100x100	±12.5(*)	329.6	X□□□-AR	X□□□-A				
100-AR				X□□□-A	X□□□-AR				

* Stroke is ±6.5mm for Feed Screw Type.



Ordering Example

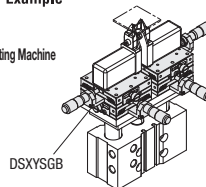
Part Number

DSXYSGB80-A
DSXYSGB80-AR



Example

Lead Wire Cutting Machine



📌 For symmetrical use, select one standard stage (-A Type) and one reversed (-AR Type) stage, respectively, as indicated above.