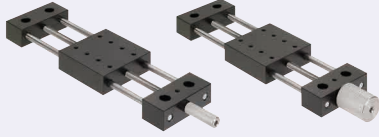


[Simplified Adjustments] X-Axis, Feed Screw, Large Lead (3.0mm)

Standard/Large Handle, M6 Mounting Holes

Features: A feed screw type simplified adjustment unit with a 3.0mm 3-starts screw. Suitable for rapid feeding such as making quick fixture moves during set-up changes. Types with M6 mounting holes on the top plate are also available.

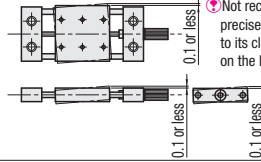
X-Axis Large Lead



XY-Axis P1941

Travel per Rotation: 3.0mm

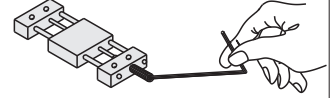
Accuracy Standards



Not recommended for precise positioning due to its clearance shown on the left.

One Point

Long stroke moves can be made easily with use of a ball-point hex wrench.



	Type		Main Body		Shaft	Knob	Feed Screw	Accessory
	Standard Handle	Large Handle	M Material	S Surface Treatment	M Material	M Material	M Material	
M4 Mounting Hole	XKS	XKSL	Aluminum Alloy	Black Anodize	SUS304	SUS303	SUS304	SCB5-20, 4pcs.
M6 Mounting Holes	XKSM	XKSML						

XKS (Standard Handle, M4 Mounting Holes) XKSM (Standard Handle, M6 Mounting Holes)
 XKSL (Large Handle, M4 Mounting Holes) XKSML (Large Handle, M6 Mounting Holes)

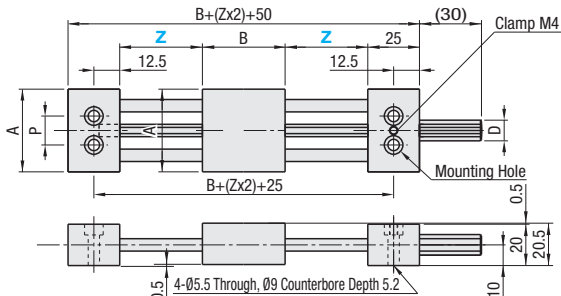
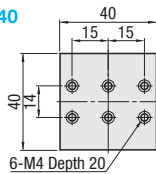


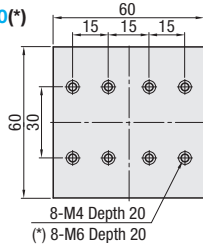
Table surfaces and bottoms are 0.5mm higher than the end mounts.

Stage Top Mounting Hole Dimensions (* marked only for XKSM and XKSML)

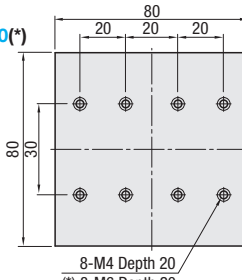
No.40



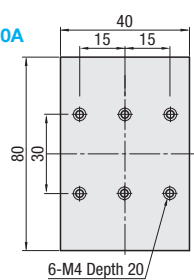
No.60(*)



No.80(*)



No.80A



Do not force the handle to turn past the end of the travel limits as it may cause the handle to come loose.

(*) 8-M6 Depth 20

Part Number Type	No.	Z Selection		Stage A-B (mm)	D	P	Load Capacity (N)	Unit Price			
		Travel Distance (Zx2)						XKS	XKSM	XKSL	XKSML
XKS XKSL	40	25	40 50	40x40	10 (Standard Handle) 24 (Large Handle)	14	68.6				
			58.8								
			68.6								
	60	25	50 75	60x60			58.8				
			63.7								
			53.9								
80	25	50 75	80x80	68.6							
		58.6									
		68.6									
XKSM XKSML	60	25	40 50 75	60x60	30	30	58.8				
			58.6								
			68.6								
	80	25	50 75	80x80			58.8				
			49.0								
			75								

Travel per Rotation: 3.0mm

For orders larger than indicated quantity, please request a quotation.

Ordering Example: Part Number: XKSL60, Z Selection: Z50

Alterations

Part Number: XKSM80, Z Selection: Z50, MMR, CLC

Mounting of a Scaled Plate on the Stage

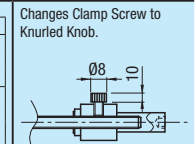
Mounts a scaled plate on the stage.
 Minimum Graduation: 0.5mm

Scaled Plate alteration will change the mounting hole pitch since a plate is attached to the stage.

M Material: Aluminum Alloy
 S Surface Treatment: Black Anodize
 A Accessory: SCB4-8 x 4 pcs.

A	Z	P1	P2
40	25	65	14
40	40	95	14
40	50	115	14
60	25	85	30
60	50	135	30
60	75	185	30
80	25	105	30
80	50	155	30
80	75	205	30
80A	25	65	30
80A	40	95	30
80A	50	115	30

Change of Clamp (Knurled Knob)



Code: MMR

Code: CLC