

[Simplified Adjustments] X-Axis, Push Screw

Screw Length Standard/Selectable

Features: Economical adjustment unit suitable for applications not requiring high precision. Springs are utilized to minimize backlash. Screw Length Selectable Type is also available for remote operating applications.

Standard



XY-Axis P.1929

Screw Length Selectable

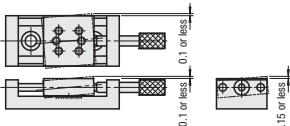


(CL Alteration)



Travel per Rotation: 0.5mm

Accuracy Standards



0.1 or less
0.15 or less

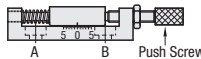
Not recommended for precise positioning due to its clearance shown on the left.

How to Mount

- Remove the Push Screw.
- Screw down the A side.
- Move the table manually to the A side.
- Screw down the B side.
- Re-install the Push Screw.

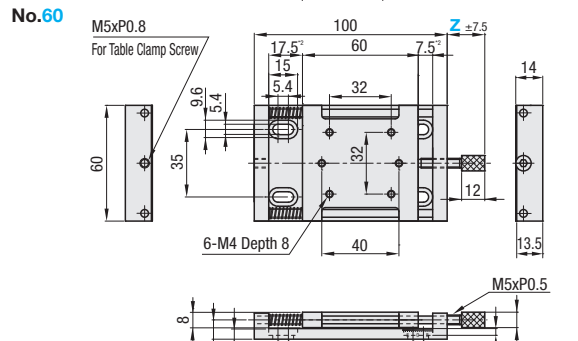
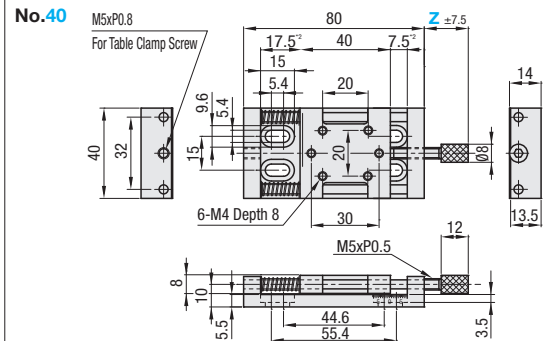
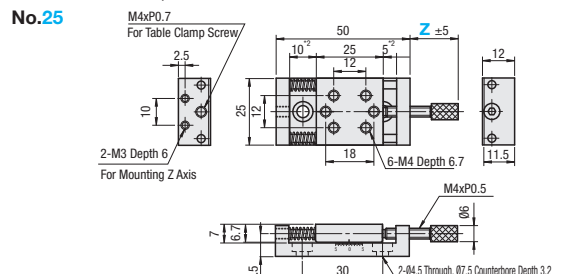
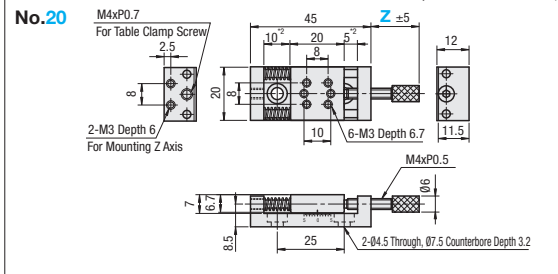
One Point

The push screw and clamp can be reinforced by combining with an extra nut to form a double-nut arrangement.



Z Dimension Configurable	Type	Main Body		Shaft	Spring	Push Screw		Accessory: *1
		M Material	S Surface Treatment	M Material	M Material	M Material	S Surface Treatment	
Standard (Z Dim. Fixed)	XKNG	Aluminum Alloy	Black Anodize	SUS303	SUS304	S45C	Electroless Nickel Plating	No. 20, 25 CBS4-6, 2 pcs. No. 40, 60: CBS5-8, 4 pcs.
Screw Length Selectable (Z Dimension Selection)	XKNGZ *3							

*1 Hex Socket Low Head Cap Screw CBS P.194, Hex Socket Ultra Low Head Cap Screw CBS P.195



Drawing * 2 shows dimensions when scale is set at 0.
Stroke has been set up based on max. deflection of the spring.
Going beyond the stroke will make it less accurate.

Part Number Type	No.	Z Available for XKNGZ only		ZXKNG Fixed	Stage Surface (mm)	Travel Distance (mm)	Load Capacity (N)		Weight (kg)	Unit Price	
							Horizontal	Vertical		XKNG	XKNGZ
(Standard) XKNG (Screw Length Selectable) XKNGZ *3	20	28	38	18	20x20	±5	9.8	2	0.04		
	25				25x25						
	40	40x40	14.7		8		0.10				
	60	60x60						0.20			

Minimum Graduation: 0.5mm Travel per Rotation: 0.5mm Vertical load capacity will be lower than the Feed Screw Type since springs are utilized.
*3 Please note that for XKNGZ, two push screws (one for XKNG and the other with the selected Z dimension) are included.

Ordering Example
Part Number - Z
XKNG20 - Z40
XKNGZ40 - Z40

Alterations
Part Number - Z - (CL)
XKNG20 - Z40 - CL
XKNGZ60 - Z60 - CL

Alteration	Opposite Clamp Bolt
Spec.	Opposing clamp screw for table immobilizing (No. 20, 25: M4, Pitch 0.7, L=30mm; No. 40, 60: M5, Pitch 0.8, L=44mm) will be included.
Code	CL

