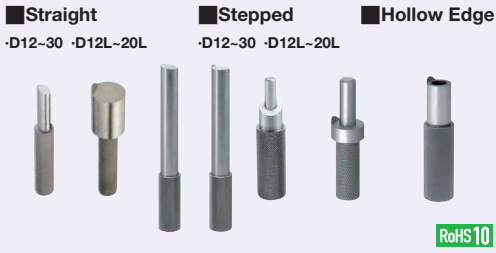


Marking Pins

Straight, Stepped, Hollow Edge

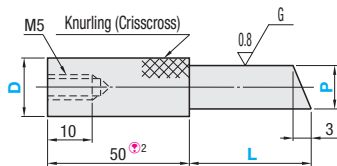
■ Features: Suitable when confirming dimensions by scribing on work pieces. For applicable bushings (② Stepped Type) see P1841, P1845.



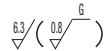
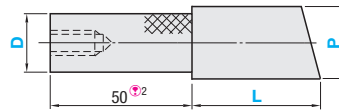
Config.	Material ^①	Hardness	① Straight Type		② Stepped Type		③ Hollow Edge Type
			P _{0.02} ⁰	P ₉₆	S _{0.02} ⁰	S ₉₆	P ₉₆
Standard	SKS3 Equivalent	58HRC~	KJPKH	KJPGKH	KJPKS	KJPGKS	-
Sharp Pointed Tip	SKS3 Equivalent	58HRC~	KJPKHE	KJPGKHE	KJPKSE	KJPGKSE	KJPGKSC

① When L dimension is 51 or more, the material for the handle part is S45C.

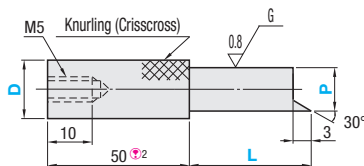
① Straight (Standard) Small Head: D=12-30



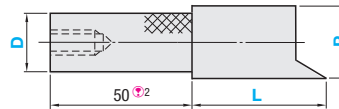
Large Head: D=12L-20L^③



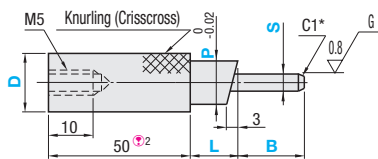
① Straight (Sharp Pointed Tip) Small Head: D=12-30



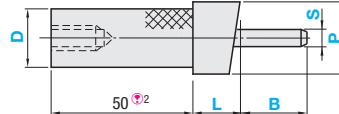
Large Head: D=12L-20L^③



② Stepped (Standard) Small Head: D=12-30

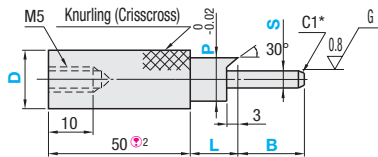


Large Head: D=12L-20L^③

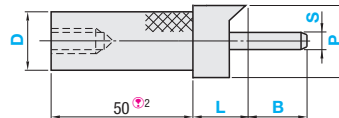


* When S=2, C is 0.5.

② Stepped (Sharp Pointed Tip) Small Head: D=12-30

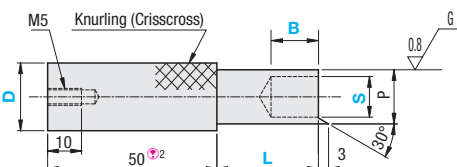


Large Head: D=12L-20L^③



* When S=2, C is 0.5.

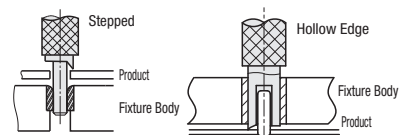
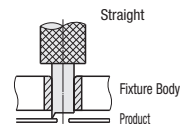
③ Hollow Edge



③ Handles and pins may be joined with an adhesive. Note that Heat or strong force may cause separation.



Example



② For shorter handle length, please refer to the alteration ZC on the next page.
③ Dimensions not specified are the same as Small Head Type.