

Slot Pins for Inspection Components

Stepped Diamond, Straight - Diamond Fixed

Features: Diamond-shaped Inspection Pins to determine the workpiece location. For compatible bushings, see ① Round Tip (P.1841-P.1844) and ② D-Shape Tip (P.1849).

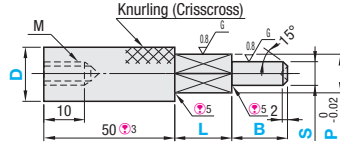
Diamond Shape Fixed

Material*	Hardness	① Round Tip		② D-Shape Tip	
		Type		Type	
		S _{0.02} ⁰	S _{g6}	S _{0.02} ⁰ /F _{0.03} ^{0.03}	S _{g6} /F _{0.03} ^{0.03}
S45C Equivalent	-	KJPDKM	KJPGDKM	KJPDK	KJPGDK
S45C Equivalent	45HRC~	-	KJPGDKMH	KJPDHK	KJPGDKH
SUS304	-	-	KJPGDKMS	KJPDKS	KJPGDKS
† SUS440C or 13Cr stainless	45~50HRC	-	-	-	KJPGDKC

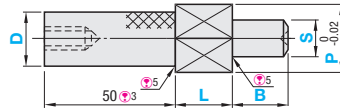
S	g6
3.00	-0.002 -0.008
3.01~ 6.00	-0.004 -0.012
6.01~10.00	-0.005 -0.014
10.01~18.00	-0.008 -0.017
18.01~29.00	-0.007 -0.020

① Round Tip

Small Head: D=8~25

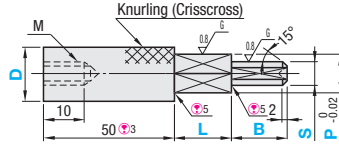


Large Head: D=10L~20L*

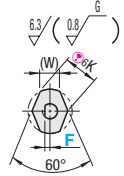
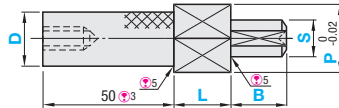


② D-Shape Tip

Small Head: D=8~25



Large Head: D=10L~20L*



- ① Large Head Type (D=10L~20L) is available for S45C only.
- ② For electroless nickel plating, specify the alteration MN.
- ③ SUS440C or 13Cr stainless has an identification groove on D part.
- ④ For shorter handle length, specify the alteration ZC.
- ④ Dimensions not specified are the same as Small Head Type.
- ⑤ There is a relief groove that is approx. 1 mm wide (approx. 0.2 mm deep).
- ⑥ $K \geq (S + 0.3)$
 $K = \sqrt{P^2 - W^2} \sin 30^\circ + W \cos 30^\circ$
Reference: $\sin 30^\circ = 0.5$
 $\cos 30^\circ \approx 0.866$



Part Number		0.01mm Increment			0.1mm Increment	1mm Increment		(W)	M		
① Round Tip (S _{0.02})	② D-Shape Tip (S _{g6})	(S _{0.02} ⁰ /F _{0.03} ^{0.03})	(S _{g6} /F _{0.03} ^{0.03})	D	P	S(P>S)	F(F<S/2) ② D-Shape Tip only			L	B
(S45C) KJPDKM	(S45C) KJPGDKM	(S45C) KJPDK	(S45C) KJPGDK	8	4.00~ 6.00	3.00~ 5.00	0.3~ 2.0	5~10	5~15	2	M4
			10	4.00~ 8.00	3.00~ 7.00	0.3~ 3.0	2			M5	
			12	6.00~10.00	3.00~ 9.00	0.3~ 4.0	3			M5	
			16	8.00~14.00	3.00~13.00	0.5~ 6.0	4			M5	
			20	12.00~18.00	5.00~17.00	1.0~ 8.0	6			M5	
	(S45C Hardened) KJPGDKMH	(S45C Hardened) KJPDHK	(S45C Hardened) KJPGDKH	25	16.00~23.00	8.00~22.00	2.0~10.0	Engraves P dimension L≤P×5	Engraves P dimension B≤S×5	8	M5
			10L	10.00~16.00	5.00~15.00	1.0~ 7.0	4			M5	
			12L	12.00~20.00	6.00~19.00	2.0~ 9.0	6			M5	
			16L	16.00~25.00	8.00~24.00	2.0~11.0	8			M5	
			20L	20.00~30.00	10.00~29.00	2.0~14.0	8			M5	
(SUS304) KJPGDKMS	(SUS304) KJPDKS	(SUS304) KJPGDKS	10L	10.00~16.00	5.00~15.00	1.0~ 7.0	Engraves P dimension L≤P×5	Engraves P dimension B≤S×5	4	M5	
		12L	12.00~20.00	6.00~19.00	2.0~ 9.0	6			M5		
		16L	16.00~25.00	8.00~24.00	2.0~11.0	8			M5		
		20L	20.00~30.00	10.00~29.00	2.0~14.0	8			M5		

Please select S dimension so that S section is smaller than the diamond section.



Ordering Example: Part Number (TYPE, D) - P - S - F - L - B
KJPDK12L - P16.00 - S6.00 - F2.2 - L10 - B10

D	① Round Tip Unit Price					② D-Shape Tip Unit Price						
	S _{0.02} ⁰	KJPGDKM	KJPGDKMH	KJPGDKMS	KJPDK	S _{0.02} ⁰ /F _{0.03} ^{0.03}	KJPDHK	KJPDKS	KJPGDK	KJPGDKH	KJPGDKS	KJPGDKC
Small Head	8											
	10											
	12											
	16											
	20											
Large Head	10L											
	12L											
	16L											
	20L											



Alterations: Part Number - P - S - F - L - B - (CH, KH, PKC~etc.)
KJPDK12 - P16.00 - S6.00 - F2.2 - L10 - B10 - CH
KJPDKM20 - P17.00 - S10 - L15 - B20 - ZC10

Alterations	Code	Spec.
Chain Alterations Chain Alterations (0.4)	CH	Loss-proof chain (length 600mm) is attached to gauge body. ④ For chains only, see P1862.
Additional Surface Treatment (Electroless Nickel Plating)	MN	Electroless nickel plating is applied. ④ Applicable to Material S45C only. ④ Combination with STC is not available.
Additional Surface Treatment (Black Oxide)	STC	Adds black oxide surface treatment. ④ Applicable to Material S45C only. ④ Combination with MN is not available.
Engraving of P Dimension	KH	Machines flats on knurled head and engraves P dimension. for SUS304 (with the character orientation arbitrary). ④ Not applicable to handle length 10.

Alterations	Code	Spec.
P Dimension Tolerance PKC	PKC	Changes P dimension tolerance to g6.
No Relief Groove NMN	NMN	Omits the relief groove between knurled part and straight part on the step. ④ Not applicable to Large Head Type.
Handle Length ZC	ZC	Changes handle length 50 to 10, 20, 30 or 40. ④ (Ordering Code) ZC20 ④ Handle length 10 and 20 are available only when P≥5 and pin length (L+B) ≤ 30. ④ For Large Head Type, only ZC30 and 40 are applicable. ④ For handle length 10, there is no tapped hole. ④ For handle length 10, combination with KH is not available.