

# Toggle Clamps

## Welding Clamps (Flange Base, Straight Base)

■ Features: MC09-2S is Straight Base Type of Welding Clamp MC09-2.

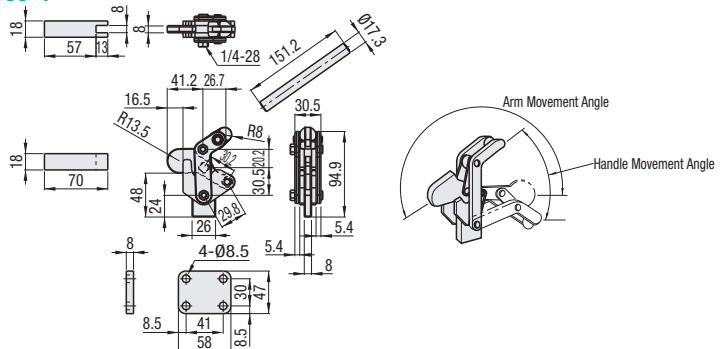
1N=0.101972kgf

### Weld-On Clamps (Flange Base)

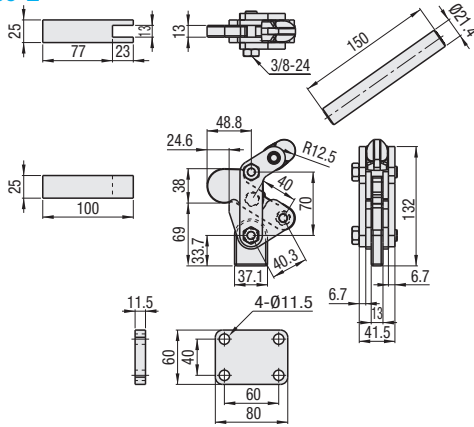


Part Number	MC09-1	MC09-2	MC09-3
Body Material	SS400 (with Hardened Bushing)		
Weight (g)	845	2130	4100
Tightening Force (N)	1960	4900	9800
Handle Movement Angle	120°	124°	126°
Arm Movement Angle	193°	193°	198°

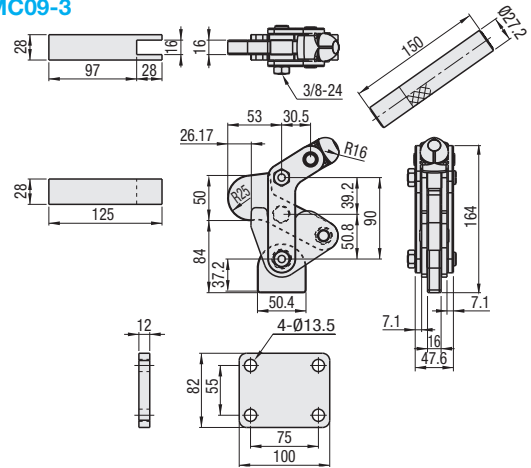
### MC09-1



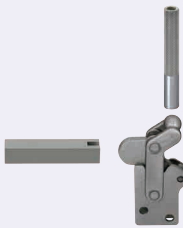
### MC09-2



### MC09-3

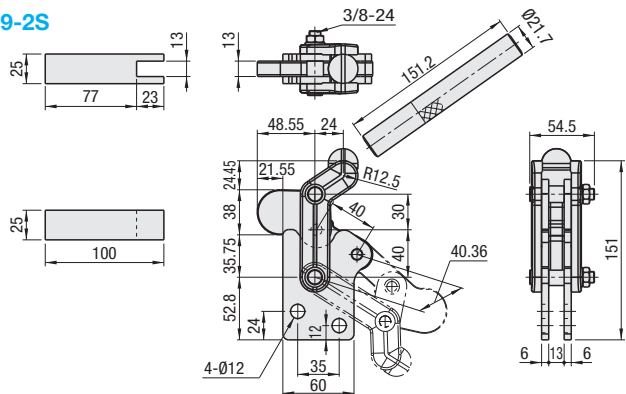


### Weld-On Clamps (Straight Base)



Part Number	MC09-2S
Body Material	SS400 (with Hardened Bushing)
Weight (g)	2500
Tightening Force (N)	5000
Handle Movement Angle	124°
Arm Movement Angle	193°

### MC09-2S

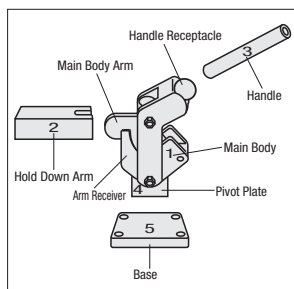


Ordering Example  
Part Number  
MC09-1  
MC09-2S

Part Number	Unit Price
MC09-1	
MC09-2	
MC09-3	
MC09-2S	



How to Use Welding Clamps for Various Applications



Weld-On Clamps are composed of 4 parts shown to the left; handle, main body, base and arm.

- Determine the mounting position of the main body.
- Determine the length of the control arm, then connect to the body arm by welding.
- Given space from the fixture for clamp mounting, determine the height of the handle, and weld the handle and the body handle receiver.
- Determine the angle between the main body and the supporting plate, and weld them together.
- Determine how to mount a clamp on to the fixture. If the base is used, weld the base and the supporting plate together.

Assemble a Weld-On clamp as described above.

Welding Clamps can be flexibly assembled depending on different working situations, thus can be used in wide range of applications.

Heat treatment (hardness 60HRC) ensures abrasion-resistant assembly of the pin constituting the supporting point, and the surrounding bushing. The clamps are best for fixtures that require frequent use or accuracy.