


Toggle Clamps

Side Push (Flange Base)

■ **Features:** Please select a product suitable in stroke and clamping force. MC07-9 is a lightweight type with a hollow mount base.

1N=0.101972N


■ **Side Push (Flange Base)**



(Clamped)
* Shaft: Nickel Plating

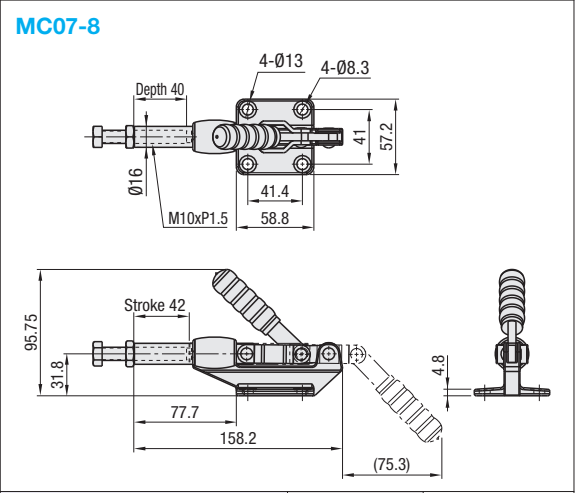
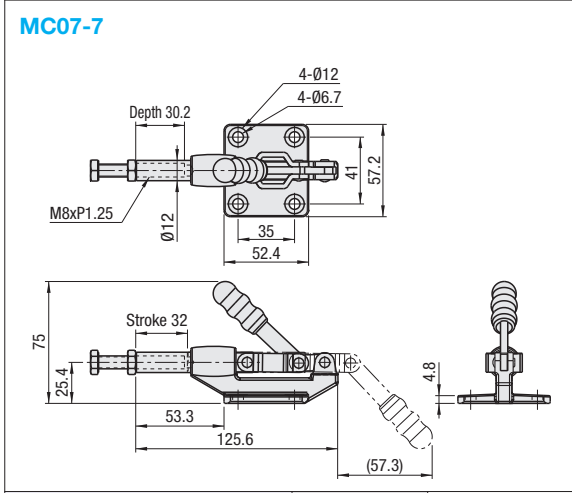
Part Number	MC07-7
Material	Main Body: SS400 / Attaching Portion: FCD450
Surface Treatment	Main Body: * Trivalent Chromate / Attaching Portion: Chemical Conversion Coating
Stroke (mm)	32
Tightening Force (N)	2270
Weight (g)	340
Handle Open-Close Angle	186°
Accessory	Steel Bolt
Unit Price	

■ **Side Push (Flange Base)**




(Clamped)
* Shaft: Nickel Plating

Part Number	MC07-8
Material	Main Body: SS400 / Attaching Portion: FCD450
Surface Treatment	Main Body: * Trivalent Chromate / Attaching Portion: Chemical Conversion Coating
Stroke (mm)	42
Tightening Force (N)	3860
Weight (g)	580
Handle Open-Close Angle	184°
Accessory	Steel Bolt
Unit Price	




■ **Side Push (Flange Base)**



(Clamped)
* Shaft: Nickel Plating

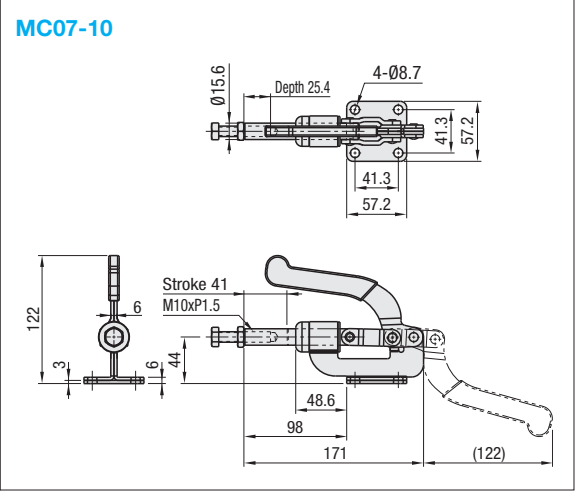
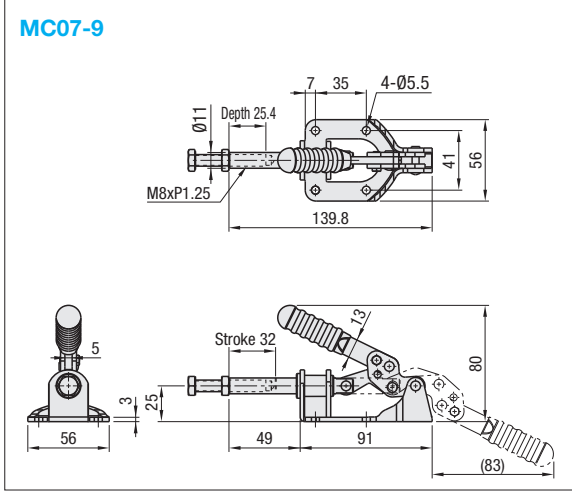
Part Number	MC07-9
Body Material	SS400
Surface Treatment	* Trivalent Chromate
Stroke (mm)	32
Tightening Force (N)	1360
Weight (g)	300
Handle Open-Close Angle	181°
Accessory	Steel Bolt
Unit Price	

■ **Side Push (Flange Base)**



(Clamped)
* Shaft: Nickel Plating

Part Number	MC07-10
Body Material	SS400
Surface Treatment	* Trivalent Chromate
Stroke (mm)	41.3
Tightening Force (N)	3640
Weight (g)	800
Handle Open-Close Angle	181°
Accessory	Steel Bolt
Unit Price	



Ordering Example **Part Number**
MC07-7