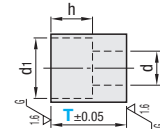
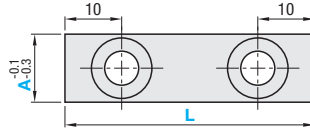
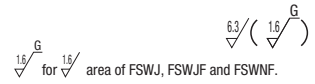


# Flat Stoppers / Shims for Flat Stoppers Standard Type



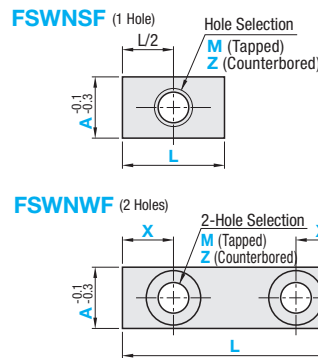
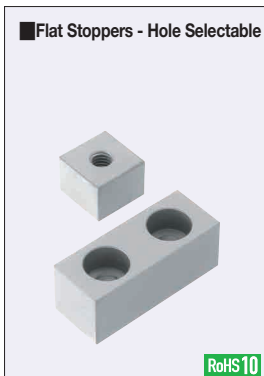
Type		Material	Hardness
T, L Selectable	T, L Configurable	S45C Equivalent	40~45HRC
FSWN	FSWNF	Polycetal	-
FSWJ	FSWJF		



Part Number		T Selection	L Selection	Unit Price	
Type	A			FSWN	FSWJ
FSWN FSWJ	12	12 15 20	50 75 100	4.5	8 5
	15			5.5	9.5 6
	16			6.6	11 7
	19				
	25				

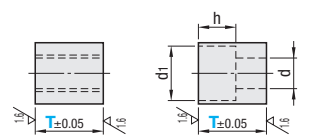
Part Number		T Selection	L Selection	Unit Price	
Type	A	1mm Increment	5mm Increment	FSWNF	FSWJF
FSWNF FSWJF	12	10~20	35~100	4.5	8 5
	15			5.5	9.5 6
	16			6.6	11 7
	19				
	25				

Part Number		T Selection	L Selection	Unit Price	
Type	A	1mm Increment	5mm Increment	FSWNF	FSWJF
FSWNF FSWJF	12	10~20	35~100	4.5	8 5
	15			5.5	9.5 6
	16			6.6	11 7
	19				
	25				



Hole Details M (Tapped Hole)

Z (Counterbored Hole)



### Counterbore Dimensions

	d	d1	h
Z4	4.5	8	5
Z5	5.5	9.5	6
Z6	6.6	11	7

Material: S45C Equivalent Hardness: 40~45HRC

Part Number		T Selection	L Selection	Hole Selection		Unit Price
Type	A	1mm Increment	1mm Increment	M (Tapped)	Z (Counterbored)	
FSWNSF	12	10~15	A ≤ L ≤ 60	M4, 5, 6	Z4, 5	
	15			M4, 5, 6	Z4, 5, 6	
	16					
	19	10~20		M6	Z6	
	25					

Part Number		T Selection	L Selection	X Selection	Hole Selection		Unit Price
Type	A	1mm Increment	1mm Increment	1mm Increment	M (Tapped)	Z (Counterbored)	
FSWNWF	12	10~15	35~100	10~30	M4, 5, 6	Z4, 5	
	15				M4, 5, 6	Z4, 5, 6	
	16						
	19	10~20			M6	Z6	
	25						

Part Number		T Selection	L Selection	X Selection	Hole Selection		Unit Price
Type	A	1mm Increment	1mm Increment	1mm Increment	M (Tapped)	Z (Counterbored)	
FSWNWF	12	10~15	35~100	10~30	M4, 5, 6	Z4, 5	
	15				M4, 5, 6	Z4, 5, 6	
	16						
	19	10~20			M6	Z6	
	25						

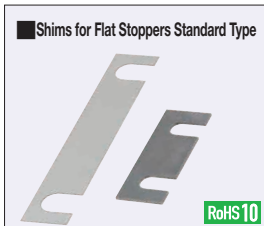


Ordering Example  
 Part Number - T - L - X - Hole Selection  
 FSWN12 - 15 - 75  
 FSWNSF16 - 12 - 16  
 FSWNWF16 - 15 - 40 - X10 - M6

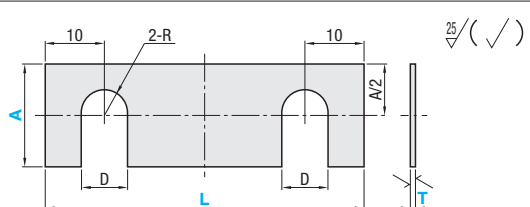


Alterations  
 Part Number - T - L - X - Hole Selection  
 FSWNWF16 - 15 - 40 - X10 - ZG4

Alterations	Counterbored Hole Depth								
Code	ZG								
Spec.	<table border="1"> <thead> <tr> <th>ZG (Counterbored)</th> <th>h</th> </tr> </thead> <tbody> <tr> <td>ZG4</td> <td>5.6</td> </tr> <tr> <td>ZG5</td> <td>6.7</td> </tr> <tr> <td>ZG6</td> <td>8.0</td> </tr> </tbody> </table>	ZG (Counterbored)	h	ZG4	5.6	ZG5	6.7	ZG6	8.0
	ZG (Counterbored)	h							
	ZG4	5.6							
	ZG5	6.7							
ZG6	8.0								
Applicable to Hole Selectable Type only									



Type	Material	Surface Treatment	T
FSWNC	SUS304	-	0.1 0.2 0.3
	SPCC Equivalent	Black Oxide	0.5 1



Part Number		T Selection	L Selection	Unit Price		
Type	A	SUS304	SPCC Equivalent	D	T0.1, 0.2, 0.3	T0.5, 1
FSWNC	12	0.1	0.5	30		
	15			50		
	16			75		
	19			100		
	25					



Ordering Example  
 Part Number - T - L  
 FSWNC12 - 0.1 - 75

For Shims for T and L Configurable Flat Stoppers, see P.2-161