

Locating Pins for Fixtures

Standard Grade, Shouldered

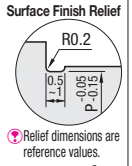
Features: For Standard Grade, P Dim. Tolerance is ± 0.05 (for Precision Grade, -0.01 or -0.02), concentricity is 0.03 or 0.05 (for Precision Grade, 0.01 or 0.02). Polishing Relief Groove is smaller than the conventional products to avoid a workpiece getting stuck.



Type	Material	Hardness
ELANA	SCM435	Hardening 35~40HRC
ELAND	Diamond	
TELANA	SCM415	Carburized Treated Hardness: 55HRC- (Depth: 0.7 ~ 0.8) Anti-carburizing on Threads
TELAND	Diamond	

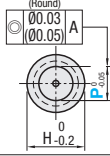
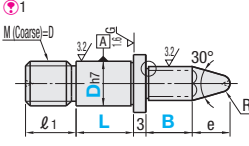
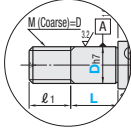
Reference: $\sin 15^\circ = 0.259$ $\tan 15^\circ = 0.267$

Type	Material	Hardness	Surface Treatment
R-LANA	SCM435	35~40HRC (Surface 750HV ~)	Hard Chrome Plating
R-LAND	Diamond		
D-LANA	SKD11 Equivalent	55HRC ~ (Surface 3000HV)	Dicoat® Treated
D-LAND	Diamond		
H-LANA	SKD11 Equivalent	55HRC ~ (Surface 3000HV)	TiCN Treatment
H-LAND	Diamond		



① Dicoat® Treated / TiCN Thread Shape

① Dicoat® Treated / TiCN items will have the () precision and Thread Shape will be ①.



① $e = P/2 \tan 15^\circ + R - (R/\sin 15^\circ)$
 ② Dicoat® Treated / TiCN Treated items do not come with a center hole.

Part Number	Type	D _{h7}	P Configurable 0.1mm Increment	B Configurable 1mm Increment	L Selection	L ₁	H	R	W	Unit Price																
										ELANA	ELAND	TELANA	TELAND	R-LANA	R-LAND	D-LANA	D-LAND	H-LANA	H-LAND							
Hardened (Round)	Carburized (Round)	Hard Chrome (Round)	Dicoat (Round)	TiCN (Round)	6	0	3.0~7.0	5	8	10	6	9	1	1~2												
					8	0	3.0~9.0	5	8	10	12	15	10	11	1.5	1~2										
					10	0	4.5~12.0	①	②	③	④	⑤	10	12	15	12	2	1~3								
					10T	-0.015	4.5~12.0	①	②	③	④	⑤	10	12	15	18	3	1~3								
					12	0	9.0~13.0	①	②	③	④	⑤	10	12	15	18	15	3	4							
(Diamond)	(Diamond)	(Diamond)	(Diamond)	(Diamond)	12	0	9.0~13.0	①	②	③	④	⑤	10	12	15	18	15	3	4							
					16	-0.018	13.0~16.0	①	②	③	④	⑤	10	12	15	18	20	18	19	4	5					

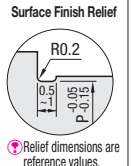
① W Dimension D6, D8: W=2 when P>5.0 D10, 10T: W=1 when P<5.0, W=2 when 5.0≤P≤7.0, W=3 when P>7.0
 ② B Dimension 5 mm ~ will be selected for Dicoat® Treated / TiCN Treated items. ③ L dimension in () is not applicable to Diamond Shape, Dicoat® and TiCN treatment.



Type	Material	Hardness
ELATA	SCM435	Hardening 35~40HRC
ELATD	Diamond	
TELATA	SCM415	Carburized 55HRC- (depth 0.7 ~ 0.8) / Anti-carburizing on Threads
TELATD	Diamond	

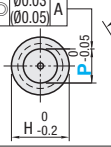
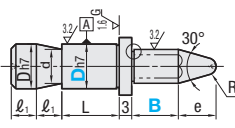
Reference: $\sin 15^\circ = 0.259$ $\tan 15^\circ = 0.267$

Type	Material	Hardness	Surface Treatment
R-LATA	SCM435	35~40HRC (Surface 750HV ~)	Hard Chrome Plating
R-LATD	Diamond		
D-LATA	SKD11 Equivalent	55HRC ~ (Surface 3000HV)	Dicoat® Treated
D-LATD	Diamond		
H-LATA	SKD11 Equivalent	55HRC ~ (Surface 3000HV)	TiCN Treatment
H-LATD	Diamond		



① Dicoat® Treated / TiCN Thread Shape

① Dicoat® Treated / TiCN Treated items will have the () precision.



① $e = P/2 \tan 15^\circ + R - (R/\sin 15^\circ)$
 ② Dicoat® Treated / TiCN Treated items do not come with a center hole.

Part Number	Type	D _{h7}	P Configurable 0.1mm Increment	B Configurable 1mm Increment	L	L ₁	H	d	R	Applicable Set Screw	W	Unit Price															
												ELATA	ELATD	TELATA	TELATD	R-LATA	R-LATD	D-LATA	D-LATD	H-LATA	H-LATD						
Hardened (Round)	Carburized (Round)	Hard Chrome (Round)	Dicoat (Round)	TiCN (Round)	6	0	3.0~7.0	8	8	9	4	1	M5	1~2													
					8	0	3.0~9.0	8	8	11	5	1.5	M5	1~2													
					10	0	4.5~12.0	①	②	③	④	⑤	10	8	13	7	2	M6	1~3								
					10T	-0.015	4.5~12.0	①	②	③	④	⑤	10	8	13	7	2	M6	1~3								
					12	0	9.0~13.0	①	②	③	④	⑤	12	10	15	9	3	M8	4								
(Diamond)	(Diamond)	(Diamond)	(Diamond)	(Diamond)	12	0	9.0~13.0	①	②	③	④	⑤	12	10	19	13	4	M8	5								
					16	-0.018	13.0~16.0	①	②	③	④	⑤	12	10	19	13	4	M8	5								

① W Dimension D6, D8: W=2 when P>5.0 D10, 10T: W=1 when P<5.0, W=2 when 5.0≤P≤7.0, W=3 when P>7.0
 ② B Dimension 5 mm ~ will be selected for Dicoat® Treated / TiCN Treated items.



Part Number	Type	D	P	B	L
ELANA	B	6	P6.0	B15	L10
ELATA	10	P8.8	B10		



Alterations	Part Number	P	B	L	(KC, KD, SC, MC)	
	ELANA	6	P6.8	B14	L5	SC

Alterations	Wear Groove Alterations	Flat Position	Flat Machining	Wrench Flats	Thread Dia.	Thread Length	Upper Relief Radius Change
Code	MK	KC	KD	SC	MC	FC	RTC
Spec.	Drill 4 grooves at B dimension. The wear and tear of the grooves indicate the degree of wear. ① Applicable to Hardening, Carburized and Round Shape Products only ② Applicable when B > 4 ③ When used together with RTC, the groove starts from the area of R value + 1 mm. Groove Depth: 0.2mm (±0.05mm) Groove Shape: V Groove (90°)	Ordering Code KC Changes the flat position to 90° from the standard position 0°. ① Applicable to Diamond Shape Type only.	Ordering Code KD Machining on one side. ① H: P-2 ② Applicable to Round Shape Type only.	Ordering Code SC Adds wrench flats. [H] 9 [11] [13] [15] [19] [H] 7 [8] [11] [13] [17] ① Applicable to Round Shape Type only.	Ordering Code MC8 Changes the thread diameter. ① D/3: M-D Mmin3 ② Applicable to Threaded only.	Ordering Code FC15 Changes the thread length. FC=1mm increment D6-10 : M-F: Mx3 D12, 16 : M-F: Mx2.5 D20 : M-F: Mx2 ① Applicable to Threaded only. ② Not applicable to Dicoat® and TiCN treatment.	Ordering Code RTC1 Changes the relief to the following radius R. [Selection] R1 R2 R3 ① RTC: (H-P)/2 ② Applicable when B: 5