

■ **Features:** Economy type is priced up to 74% lower than Standard Type with the tolerance of $+0.3$ / $+0.1$ for P Dimension/W Dimension and 0 / -0.2 for D Dimension.

■ **Oval - Compact Flange**



■ **Oval - Compact Flange, Economy**

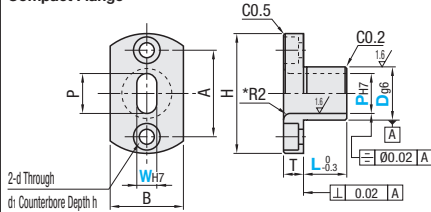


RoHS 10

■ **Compact Flange**

Material	Surface Treatment	Hardness	Type
SKS3	-	56-60HRC	JBEH
Equivalent	Electroless Nickel Plating	56-60HRC	JBEMH

Compact Flange



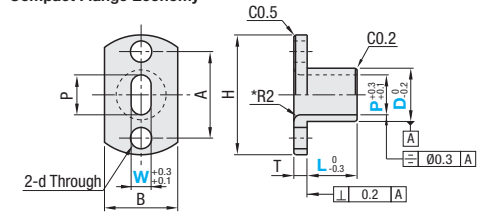
* When thickness is 2mm or less and (D-P)/2 ≤ 2, R is 0.5.

■ **Compact Flange Economy**

Material	Surface Treatment	Hardness	Type
S45C	Electroless Nickel Plating	-	JBFR
Equivalent	Electroless Nickel Plating	45-50HRC	JBFBM
			JBFK
			JBFN

6.3 (1.6/)

Compact Flange Economy



■ **Compact Flange**

Part Number	Type	D	D Tolerance g6	PH7	WH7	L	T	H	A	B	d	d1	h	Unit Price	
														0.01mm Increment	0.01mm Increment
JBEH JBEMH	10	-0.005 -0.014	4.00-8.00	3.00 ≤ W < P	8-40 L+T ≤ Px3	5	25	17	12	3.3	6.5	3.5			
	12	-0.006 -0.017	4.00-10.00												
	16	-0.007 -0.020	8.00-14.00												
	20	-0.007 -0.020	10.00-18.00												
	25	-0.007 -0.020	13.00-22.00												
	30	-0.009 -0.025	16.00-25.00												
35	-0.009 -0.025	18.0-25.00													

■ **Compact Flange Economy**

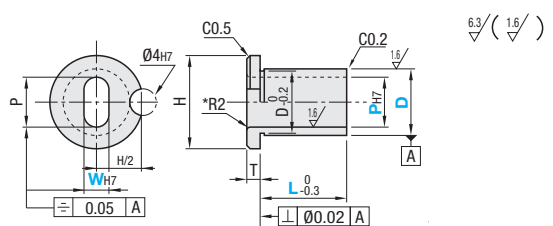
Part Number	Type	D	P	W	L	T	H	A	B	d	Unit Price					
											0.1mm Increment	0.1mm Increment	1mm Increment	JBFR	JBFBM	JBFK
JBFR JBFBM JBFK JBFN	10	4.0-8.0	4.0 ≤ W < P	5-40 L+T ≤ Px3	3	25	17	12	5	3.3	6.5	3.5				
	12	4.0-10.0														
	15	8.0-13.0														
	16	8.0-14.0														
	18	10.0-16.0														
	20	10.0-18.0														
	22	13.0-22.0														
	25	13.0-22.0														
	30	16.0-25.0														
	35	18.0-25.0														

■ **Oval - Shouldered (Dowel Pin)**



RoHS 10

Material	Surface Treatment	Hardness	Type
SKS3	-	56-60HRC	JBPE
Equivalent	Electroless Nickel Plating	56-60HRC	JBPEM



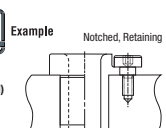
* When thickness is 2mm or less and (D-P)/2 ≤ 2, R is 0.5.

Part Number	Type	D	D Tolerance		PH7	WH7	L	T	H	Unit Price					
			p6	m6						0.01mm Increment	0.01mm Increment				
(p6) JBPE JBPEM	10	+0.024 +0.015	+0.015 +0.006	4.00-8.00	3.00 ≤ W < P	8-40 L+T ≤ Px3	3	14	16	20	26	30	35		
	12	+0.029 +0.018	+0.018 +0.007	4.00-10.00											
	16	+0.035 +0.022	+0.021 +0.008	10.00-18.00											
	25	+0.035 +0.022	+0.021 +0.008	13.00-22.00											
	30	+0.042 +0.026	+0.025 +0.009	16.00-25.00											
	35	+0.042 +0.026	+0.025 +0.009	18.0-25.00											



Ordering Example

Part Number	P	W	L
JBAFG8	- P4.1	-	L11
JBHG20	- P13.0	-	L20
JBHFG18	- P12.00	-	L18.0
JBFR10	- P6.0	- W4.5	L10
JBPE10	- P6.8	- W4.8	L15



Alterations

Part Number	P	W	L	(HC, RH)
JBAFPG18	- P6.0	-	L15.0	HC
JBFR10	- P6.0	- W4.5	L10	RH

Alterations	Code	Spec.
	HC	Changes the depth of set screw groove depth from 0.5mm to 1.0mm. [Ordering Code] HC * Applicable to Retaining Straight only. * Applicable to D dimension 18 or more.
	RH	Changes the inner diameter radius R from shoulder side to D dimension end face. Size of R will be the same as R on shoulder side. [Ordering Code] RH * Applicable to Compact Flange, Economy Type only. * (D-P)/2-R ≥ 1.7