

Locating Pins - Small Flat Head

Tapped

■ **Features:** Small Flat Head with the shape designed to be mounted from back using bolts. Improved maintainability compared to the press fit type.

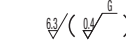
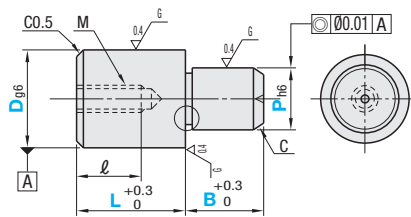


(Alteration CN)



Material No.	Material	Surface Treatment	Hardness	Type		
				P Selectable	P Configurable	P, L, B Configurable
①	SKS3 Equivalent	-	Treated Hardness: 60 ~ 63HRC	JPDSTB	JPDSTC	FPDSTC
②	SKS3 Equivalent	Hard Chrome Plating	Treated Hardness: 50 ~ 55HRC Plating Hardness: 750HV ~	-	-	GFPDSTC
④	SUS304*	-	-	SJPDSTB	-	SFPDSTC
⑥	SUS440C or 13Cr stainless	-	Treated Hardness: 50 ~ 55HRC	-	CJPDSTC	CFPDSTC

* For P Selectable Type, it is SUS304 equivalent.



Ⓢ SUS440C or 13Cr stainless has an identification groove at any position on D part.

Ⓢ Polished, centering hole is sometimes not available for SUS304.

Ⓢ Relief dimension is a reference value.

■ P Dim. Tolerance Table

P	h6
4.00-6.00	0 -0.008
6.01-10.00	0 -0.009
10.01-18.00	0 -0.011
18.01-20.00	0 -0.013

■ P Selectable

Type	Part Number		P Selection	L	B	M (Coarse)	* Tightening Torque N·cm	ℓ	C
JPDSTB SJPSTB	6	-0.004 -0.012	4	10	3	M3	98	5	0.5
	8	-0.005 -0.014	6	12	4	M4	225	6	
	10	-0.006 -0.017	8	16	5	M5	461	8	1
	12	-0.007 -0.020	10	20	6				
	16	-0.008 -0.023	10 14	24	10				M8

■ P Configurable

Type	Part Number		P	L	B	M (Coarse)	* Tightening Torque N·cm	ℓ	C
	D	D dim. Tolerance g6	0.01mm Increment						
JPDSTC CJPDSTC	6	-0.004 -0.012	4.00~6.00	10	3	M3	98	5	0.5
	6T	-0.004 -0.012				M2.6	-	4	
	8	-0.005 -0.014	6.00~8.00	12	4	M4	225	6	1
	10	-0.005 -0.014							
	12	-0.006 -0.017	8.00~13.00	20	6	M5	461	8	1.5
	13	-0.006 -0.017							
	16	-0.007 -0.020	10.00~16.00	24	10	M8	1911	12	2
	20	-0.007 -0.020							

■ P, L, B Configurable

Type	Part Number		P	L	B	M (Coarse)	* Tightening Torque N·cm	ℓ	C
	D	D dim. Tolerance g6	0.01mm Increment	1mm Increment	0.1mm Increment				
FPDSTC GFPDSTC SFPDSTC CFPDSTC	6	-0.004 -0.012	4.00~6.00	8~12	2.0~12.0	M3	98	5	0.5
	6T	-0.004 -0.012				M2.6	-	4	
	8	-0.005 -0.014	6.00~8.00	11~16	2.0~15.0	M4	225	6	1
	10	-0.005 -0.014							
	10T	-0.005 -0.014	7.00~10.00	8~16	3.0~20.0	M4	225	6	
	12	-0.006 -0.017	7.00~12.00	12~24	3.0~20.0	M5	461	8	1.5
	12T	-0.006 -0.017							
	13	-0.006 -0.017	8.00~13.00	13~26	5.0~20.0	M8	1911	10	2
	13T	-0.006 -0.017							
	16	-0.007 -0.020	10.00~16.00	16~32	5.0~20.0	M8	1911	12	3
	16T	-0.007 -0.020							
	20	-0.007 -0.020	13.00~20.00	20~40	5.0~20.0	M8	1911	12	3
	20T	-0.007 -0.020							

Ⓢ Pins of D dimension with T have one size smaller thread diameter and larger wall thickness. (Actual D dimension is the number without "T".)

Ⓢ Note the strength of under-head part. Ⓢ P.1566 Ⓢ Please confirm pilot hole depth on Ⓢ P.1566. Holes may go through.

* The tightening torque (ref. value) for hardened products is strength class 8.8. (See technical data on Ⓢ P.2297.) Not applicable when using locking materials or lock washers.