

# Plastic Chain Conveyors

## Single Track, Head Drive, 3-Slot Frame (Sprocket Dia. 57mm)

■ **Features:** Use of Plastic Chains prevents scratches, and makes for easy maintenance.



### CVSPC 6W Motor Type

	Frame	Motor Cover	Pulley Holder	Plastic Chain
<b>M</b> Material	Aluminum	Aluminum	A5052	Polycycetal
<b>S</b> Surface Treatment	Clear Anodize	Paint	Clear Anodize	-

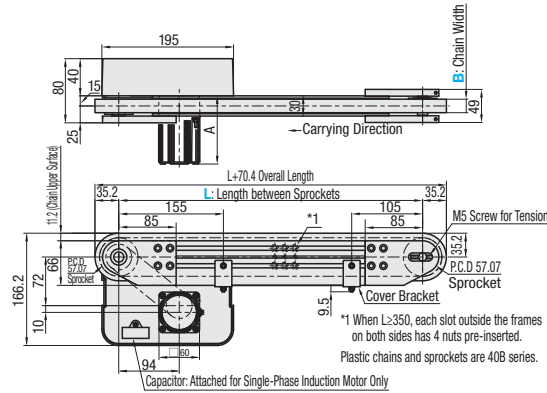
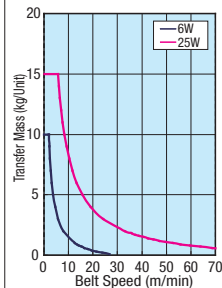
#### ■ Gearhead Reduction Ratio

\*May decrease depending on load condition.

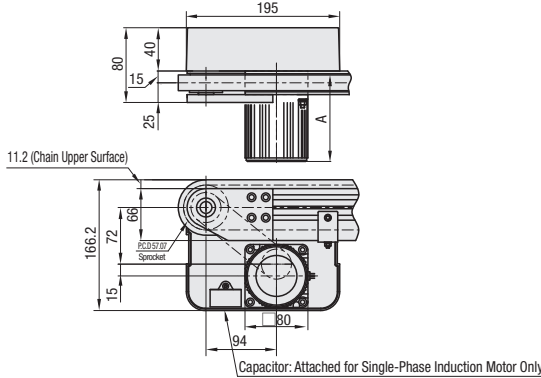
Gearhead Reduction Ratio	Belt Speed (m/min)	
	50Hz	60Hz
5	53.7	64.4
7.5	35.8	43.0
9	29.8	35.8
12.5	21.5	25.8
15	17.9	21.5
18	14.9	17.9
25	10.7	12.9
30	9.0	10.7
36	7.5	9.0
50	5.4	6.4
60	4.5	5.4
75	3.6	4.3
90	3.0	3.6
100	2.7	3.2
120	2.2	2.7
150	1.8	2.1
180	1.5	1.8

#### ■ Conveying Capacity

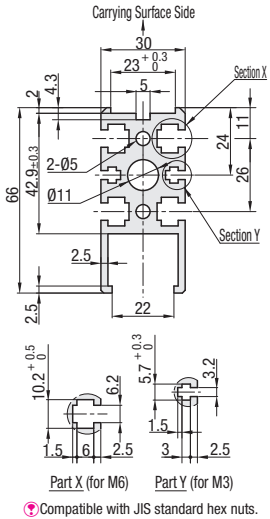
\* Reference Value



### 25W Motor Type



### Frame Cross Section and Enlarged View (Symmetrical)



#### \* A Dimension Details

Output (W)	Motor		Reduction Ratio	A
	Specification	Manufacturer		
6W	Induction Motor	Panasonic Motor	12.5-25	101.0
		Oriental Motor	30-180	108.0
		Taiwanese Motor	12.5-25	105.0
	Variable Speed Motor Control Motor	Oriental Motor	30-180	115.0
		Taiwanese Motor	12.5-75	114.7
		Taiwanese Motor	90-180	120.7
25W	Induction Motor	Panasonic Motor	12.5-180	115.0
		Oriental Motor	12.5-18	117.0
		Taiwanese Motor	25-180	127.5
	Variable Speed Motor Control Motor	Oriental Motor	12.5-75	129.0
		Taiwanese Motor	90-180	136.0
		Taiwanese Motor	12.5-18	127.0

Part Number	B Selection	L 5mm Increment	Motor				Plastic Chain Belt Specification	Motor Manufacturer Selection
			Output (W)	Voltage (V)	Specification	Gearhead Reduction Ratio		
CVSPC	20	350-3000	6	T100 (Single-phase)	IM (Induction Motor)	5 7.5 9 12.5 15	H (Standard, White) D (Conductive, Black) J (No Belt)	A (Panasonic Motor) B (Oriental Motor) C (Taiwanese Motor)
			25	T200 (Single-phase)	SCM (Variable Speed Motor)	18 25 30 36 50		
			25	S200 (3-Phase)	IM (Induction Motor)	60 75 90 100 120		
			6	NV (No Motor)	NM (No Motor)	150 180		R (No Motor, Gearhead)

⚠ Connect the motor so that the chain rotates in the direction of conveyance. For connection diagram, and details of motor and motor driver, see **P. 1267** onward. ⚠ For belt details, see **P.1279** onward.  
 ⚠ When "No motor, gearhead" is selected, the motor mounting hole pitch will vary depending on the motor's power rating. Please see Technical Information in our Conveyor Selection web site for the dimension details.  
 ⚠ When "No motor, gearhead" is selected, this unit will be delivered unassembled. The customer is to assemble the unit according to the included assembly instructions. See our Conveyor Selection site for assembly procedures and packaging details.  
 ⚠ Since plastic chain is subject to abrasion and produces dust during use, it is not suitable for the use in the clean room. This, however, does not affect functionality of conveyance.

Part Number	B	Body Price 1 ~ 2 pc(s).																						
		L350-400	L405-500	L505-600	L605-700	L705-800	L805-900	L905-1000	L1005-1100	L1105-1200	L1205-1300	L1305-1400	L1405-1500	L1505-1600	L1605-1700	L1705-1800	L1805-1900	L1905-2000	L2005-2200	L2205-2400	L2405-2600	L2605-2800	L2805-3000	
CVSPC	20																							

⚠ For orders larger than indicated quantity, Days to Ship and Price are to be quoted.

Motor, Belt Spec. Price	Motor Output	Specification	A (Panasonic Motor)	B (Oriental Motor)	C (Taiwanese Motor)	R (No Motor, Gearhead)	H (Standard)	D (Conductive)	J (No Belt)
6W	25W	IM							
		SCM							

Ordering Example: **CVSPC** - **20** - **1000** - **25** - **T100** - **IM** - **25** - **H** - **C**

Alterations: Motor Position Reversed, Additional Counterbores, Motor Cover with Window, Brackets for Speed Controller Included, Post-Assembly Insertion Nuts Included, Motor with Terminal Box, Orthogonal Shaft Gear Head

Ex.) For No Belt  
 Ex.) For No Motor, Gearhead

CVSPC-20-1000-25-T100-SCM-25-J-B  
 CVSPC-20-1000-25-NV-NM-NH-H-R

Body Price + Motor, Belt Spec. Price = Unit Price

For details of alterations, see **P. 1264** onward.