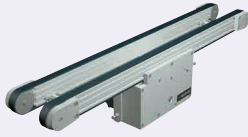


# Timing Belt Conveyors

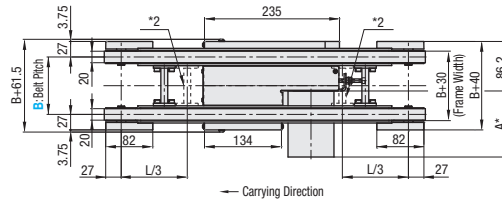
## Dual Track, Center Drive, 3-Groove Frame (Pulley Dia. 50mm)

■ **Features:** Since there are two rows of conveyor surfaces, sensors and stoppers can be mounted between the belts. The Center Drive configuration allows drive section position adjustments. With the addition of tapped holes for pulley holders, mounting of optional parts becomes easier, compared to CVSTP.

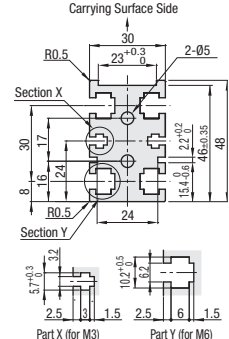


### CVGTP

#### 25W Motor Type



#### Frame Cross Section and Enlarged View (Symmetrical)



Compatible with JIS standard hex nuts.

	Frame	Motor Cover ①	Motor Cover ②	Pulley Holder
<b>M</b> Material	Aluminum	A5052	A5052	Aluminum
<b>S</b> Surface Treatment	Clear Anodize	Clear Anodize	Clear Anodize	Paint

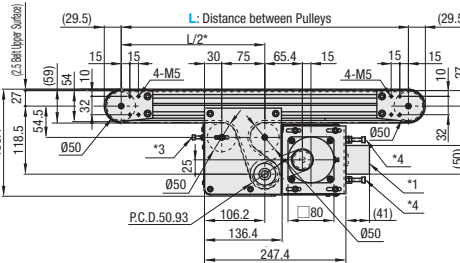
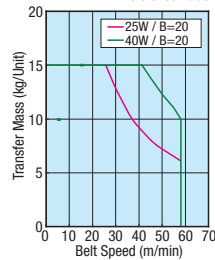
#### ■ Gearhead Reduction Ratio

\*May decrease depending on load condition.

Gearhead Reduction Ratio	Belt Speed (m/min)	
	50Hz	60Hz
5	48.0	57.6
7.5	32.0	38.4
9	26.7	32.0
12.5	19.2	23.0
15	16.0	19.2
18	13.3	16.0
25	9.6	11.5
30	8.0	9.6
36	6.7	8.0
50	4.8	5.8
60	4.0	4.8
75	3.2	3.8
90	2.7	3.2
100	2.4	2.9
120	2.0	2.4
150	1.6	1.9
180	1.3	1.6

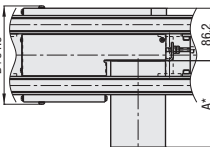
#### ■ Conveying Capacity

\* Reference Value



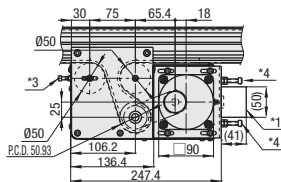
\*The drive section can be moved to a desired position within the aluminum extrusion slots.  
\*When  $L \leq 425$ , each slot has 4 pre-inserted nuts provided.  
When counterbores for inserting nuts are required, please specify in alterations.

#### 40W Motor Type



#### Note

- \*1 Capacitor: Installed on Single-Phase Induction Motors Only
- \*2 When  $2005 \leq L \leq 3000$ , Joints mounted at these locations (2 places)
- \*3 M5 Screw for Tension
- \*4 M6 Tensioning Screw



\*Timing belts used is T10 Type (P 1473 LTR-T10200 onward). See product pages for details..

#### \* A Dimension Details

Output (W)	Motor		Reduction Ratio	A
	Specification	Manufacturer		
25W	Induction Motor	Panasonic	5-180	115.0
		Oriental	5-18	117.0
			25-180	127.5
	Variable Speed Motor	Taiwanese	5-75	129.0
		Oriental	90-180	136.0
			5-18	127.0
40W	Induction Motor	Panasonic	5-180	142.0
		Oriental	5-18	147.0
			25-180	165.0
	Variable Speed Motor	Taiwanese	5-75	170.6
		Oriental	90-180	170.6
			5-18	157.0
Variable Speed Motor	Panasonic	5-180	170.6	
	Oriental	25-180	175.0	
		5-75	172.1	
Variable Speed Motor	Taiwanese	90-180	181.1	

Part Number	B 1mm Increment	L 5mm Increment	Motor				Belt Specification	Motor Manufacturer Selection
			Output (W)	Voltage (V)	Specification	Gearhead Reduction Ratio		
CVGTP	80-300	325-3000	25 40	TA115 (Single-phase)	IM (Induction Motor)	5 7.5 9 12.5 15 18 25 30 36 50 60 75 90 100 120 150 180	S (For Sliding, Green) J (No Belt)	A (Panasonic Motor) B (Oriental Motor) C (Taiwanese Motor)
					SCM *Oriental Motor only (Variable Speed Motor)			
					IM (Induction Motor)			
					NV (No Motor)	NM (No Motor)		
							R (No Motor, Gearhead)	

- ⚠ Connect the motor so that the belt rotates in the direction of conveyance. For connection diagram, and details of motor, see **P 1267** onward. ⚠ For belt details, see **P 1279** onward.
- ⚠ When "No motor, gearhead" is selected, the motor mounting hole pitch will vary depending on the motor's power rating. Please see Technical Information in our Conveyor Selection web site for the dimension details.
- ⚠ When "No motor, gearhead" is selected, this unit will be delivered unassembled. The customer is to assemble the unit according to the included assembly instructions. See our Conveyor Selection site for assembly procedures and packaging details.

Part Number	B	Body Price 1 - 2 pc(s).																						
		L325-400	L405-500	L505-600	L605-700	L705-800	L805-900	L905-1000	L1005-1100	L1105-1200	L1205-1300	L1305-1400	L1405-1500	L1505-1600	L1605-1700	L1705-1800	L1805-1900	L1905-2000	L2005-2250	L2255-2500	L2505-2750	L2755-3000		
CVGTP	80-100																							
	110-150																							
	160-200																							
	210-250																							
	260-300																							

⚠ For orders larger than indicated quantity, Days to Ship and Price are to be quoted.

Motor, Belt Spec. Price	Motor Output/Specification		A (Panasonic Motor)	B (Oriental Motor)	C (Taiwanese Motor)	R (No Motor, Gearhead)	J (No Belt)
	25W 40W	IM SCM					

Ordering Example: **CVGTP** - **B** - **L** - **Motor** - **Belt Specification** - **Motor Manufacturer Selection**

CVGTP - 130 - 660 - 25 - S200 - IM - 15 - S - B

Alterations: Specify Drive Section Position, Additional Counterbores, Brackets for Speed Controller Included, Post-Assembly Insertion Nuts Included, Motors with Electromagnetic Brake, Motor with Terminal Box, Stands (Legs)

Ex.) For No Motor, Gearhead: CVGTP-100-1000-25-NV-NM-NH-S-R  
Ex.) For No Belt: CVGTP-100-1000-25-T200-IM-18-J-B

Body Price + Price with Motor + Belt Spec. Price = Unit Price

For details of alterations, see **L26** P. 1264 onward.