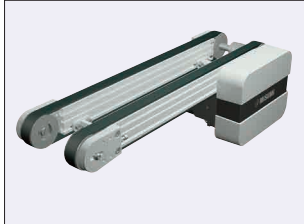


Timing Belt Conveyors

Dual Track, Head Drive, 3-Groove Frame (Pulley Dia. 50mm)

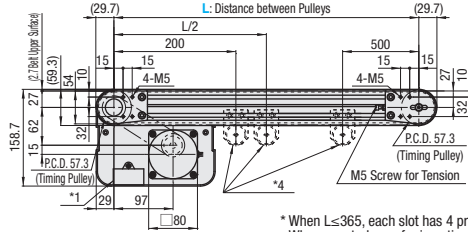
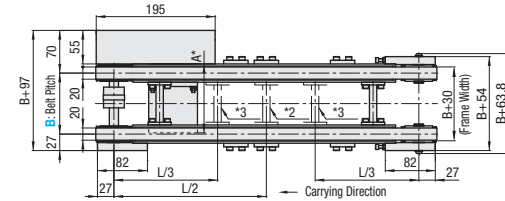
Features: Since there are two rows of conveyor surfaces, sensors and stoppers can be mounted between the belts. Belt replacement can be done more easily compared to CVSTB.



	Frame	Motor Cover	Pulley Holder
M Material	Aluminum	Aluminum	Aluminum
S Surface Treatment	Clear Anodize	Paint	Paint

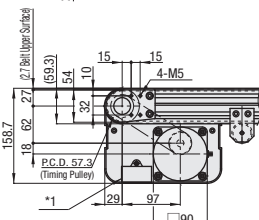
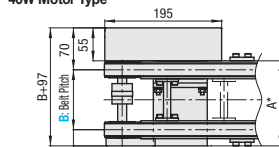
CVGTB

25W Motor Type



* When $L \leq 365$, each slot has 4 pre-inserted nuts provided.
When counterbores for inserting nuts are required, please specify in alterations.

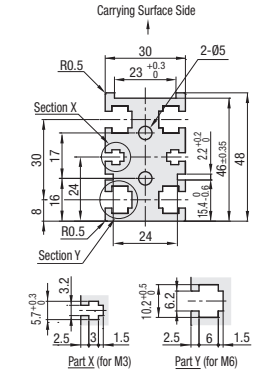
40W Motor Type



- Note**
- *1 Capacitor: Installed on Single-Phase Induction Motors Only
 - *2 When $1005 \leq L \leq 2000$, Joints mounted at these locations (1 place)
 - *3 When $2005 \leq L \leq 3000$, Joints mounted at these locations (2 places)
 - *4 Belt Support Roller: When $2005 \leq L$, mounted at these locations (3 places)

* Timing belt used is T10 Type (P. 1473 LTBRA-T10200 onward). See product pages for details.

Frame Cross Section and Enlarged View (Symmetrical)



Compatible with JIS standard hex nuts.

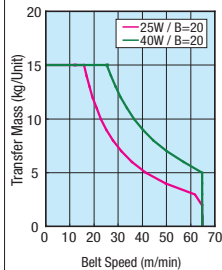
Gearhead Reduction Ratio

* May decrease depending on load condition.

Gearhead Reduction Ratio	Belt Speed (m/min)	
	50Hz	60Hz
5	54.0	64.8
7.5	36.0	43.2
9	30.0	36.0
12.5	21.6	25.9
15	18.0	21.6
18	15.0	18.0
25	10.8	13.0
30	9.0	10.8
36	7.5	9.0
50	5.4	6.5
60	4.5	5.4
75	3.6	4.3
90	3.0	3.6
100	2.7	3.2
120	2.3	2.7
150	1.8	2.2
180	1.5	1.8

Conveying Capacity

* Reference Value



* A Dimension Details

Output (W)	Motor Specification	Manufacturer	Reduction Ratio	A
25W	Induction Motor	Panasonic	5-180	115.0
		Oriental	5-18	117.0
		Taiwanese	25-180	127.5
	Variable Speed Motor	Taiwanese	5-75	129.0
		Oriental	90-180	136.0
		Panasonic	5-18	127.0
40W	Induction Motor	Panasonic	25-180	137.5
		Oriental	5-75	139.5
		Taiwanese	90-180	146.5
	Variable Speed Motor	Taiwanese	5-180	142.0
		Oriental	5-18	147.0
		Panasonic	25-180	165.0
Variable Speed Motor	Taiwanese	5-75	161.6	
	Oriental	90-180	170.6	
	Taiwanese	5-18	157.0	
Variable Speed Motor	Oriental	25-180	170.6	
	Taiwanese	5-75	172.1	
Variable Speed Motor	Oriental	90-180	181.1	
	Taiwanese	5-75	172.1	

Part Number	B 1mm Increment	L 5mm Increment	Motor					Belt Specification	Motor Manufacturer Selection			
			Output (W)	Voltage (V)	Specification	Gearhead Reduction Ratio						
CVGTB	80-300	265-3000	25 40	TA115 (Single-phase)	IM (Induction Motor)	5	7.5	9	12.5	15	S (For Sliding, Green) J (No Belt)	A (Panasonic Motor) B (Oriental Motor) C (Taiwanese Motor) R (No Motor, Gearhead)
					SCM *Oriental Motor only (Variable Speed Motor)	18	25	30	36	50		
					SA220 (3-Phase)	60	75	90	100	120		
					SA230 (3-Phase)	150	180					
				NV (No Motor)	NM (No Motor)	NH (No Gearhead)						

- Connect the motor so that the belt rotates in the direction of conveyance. For connection diagram, and details of motor, see P. 1267 onward. For belt details, see P. 1279 onward.
- When "No motor, gearhead" is selected, the motor mounting hole pitch will vary depending on the motor's power rating. Please see Technical Information in our Conveyor Selection web site for the dimension details.
- When "No motor, gearhead" is selected, this unit will be delivered unassembled. The customer is to assemble the unit according to the included assembly instructions. See our Conveyor Selection site for assembly procedures and packaging details.

Part Number	B	Body Price 1 ~ 2 pc(s).																							
		L265-300	L305-400	L405-500	L505-600	L605-700	L705-800	L805-900	L905-1000	L1005-1100	L1105-1200	L1205-1300	L1305-1400	L1405-1500	L1505-1600	L1605-1700	L1705-1800	L1805-1900	L1905-2000	L2005-2250	L2255-2500	L2505-2750	L2755-3000		
CVGTB	80-100																								
	110-150																								
	160-200																								
	210-250																								
	260-300																								

For orders larger than indicated quantity, Days to Ship and Price are to be quoted.

Motor, Belt Spec. Price	Motor Output Specification		A (Panasonic Motor)	B (Oriental Motor)	C (Taiwanese Motor)	R (No Motor, Gearhead)	J (No Belt)
	25W 40W	IM SCM					

Ordering Example: **CVGTB** - **160** - **880** - **25** - **T200** - **IM** - **120** - **S** - **B**

Part Number: B - L - Motor (Output - Voltage - Specification - Gearhead Reduction Ratio) - Belt Specification - Motor Manufacturer Selection

Alterations: Motor Position Reversed, Additional Counterbores, Motor Cover with Window, Brackets for Speed Controller Included, Post-Assembly Insertion Nuts Included, Motor with Terminal Box, Stands (Legs)

Ex.) For No Motor, Gearhead: CVGTB-100-1000-25-NV-NM-NH-S-R
Ex.) For No Belt: CVGTB-100-1000-25-T100-IM-5-J-C

Body Price + Price with Motor + Belt Spec. Price = Unit Price

For details of alterations, see P. 1264 onward.