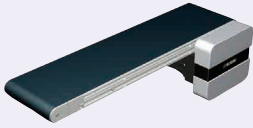


Flat Belt Conveyor Full Belt Type

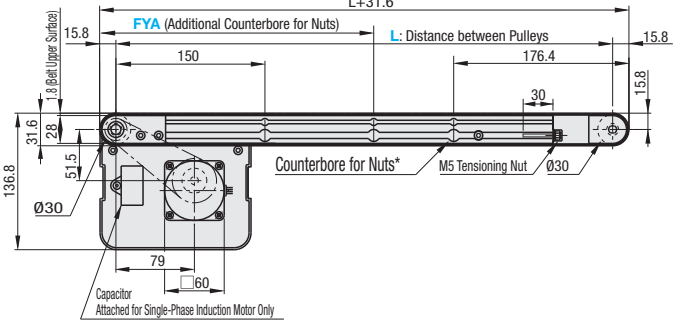
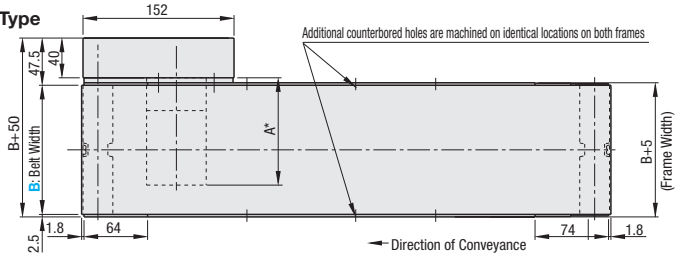
With Meandering Prevention Crosspiece, Head Drive, 2-Groove Frame (Pulley Dia. 30mm)

Features: Conveyor with full width belt that the entire surface can be used for transporting. Meandering can be prevented by the use of crosspiece.

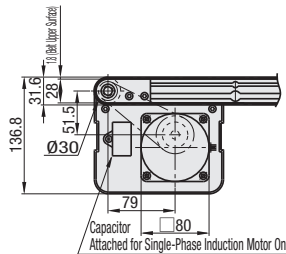
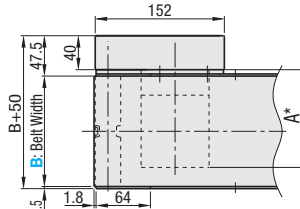


CVSFC

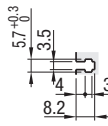
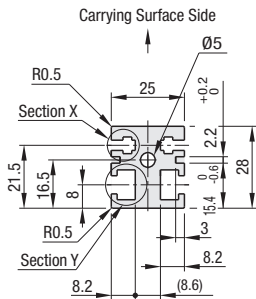
6W Motor Type



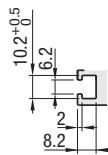
25W Motor Type



Frame Cross Section and Enlarged View (Symmetrical)



Part X (for M3)



Part Y (for M6)

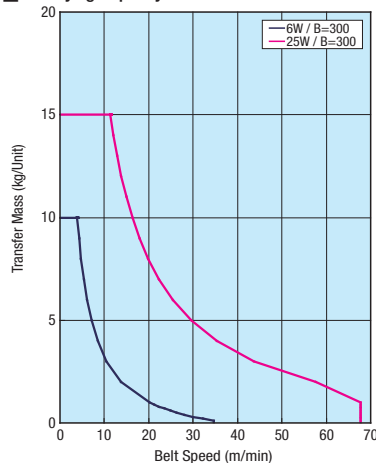
Compatible with JIS standard hex nuts.

*When $L \leq 360$, counterbores for the nuts will not be provided. However, each slot has 4 pre-inserted nuts provided.
 The dimensions in the diagram is for Belt Specifications H (0.8mm THK.). Take note that belt thickness varies by Belt Specifications. For Belt Specifications, see **P.1279**~.

* A Dimension Details

Output (W)	Motor		Reduction Ratio	A
	Specification	Manufacturer		
6W	Induction Motor	Panasonic	12.5~25	101.0
			30~180	108.0
		Oriental	12.5~25	105.0
			30~180	115.0
		Taiwanese	12.5~75	114.7
			90~180	120.7
	Variable Speed Motor	Oriental	12.5~25	115.0
			30~180	125.0
		Taiwanese	12.5~75	126.9
			90~180	132.9
25W	Induction Motor	Panasonic	5~180	115.0
			5~18	117.0
		Oriental	25~180	127.5
			5~75	129.0
		Taiwanese	90~180	136.0
			Variable Speed Motor	Oriental
	25~180	137.5		
	Taiwanese	5~75		139.5
		90~180		146.5

Conveying Capacity



*Reference Value may different by selected Belt.

Gearhead Reduction Ratio

*May decrease depending on load condition.

Gearhead Reduction Ratio	Belt Speed (m/min)	
	50Hz	60Hz
5	56.4	67.7
7.5	37.6	45.1
9	31.3	37.6
12.5	22.6	27.1
15	18.8	22.6
18	15.7	18.8
25	11.3	13.5
30	9.4	11.3
36	7.8	9.4
50	5.6	6.8
60	4.7	5.6
75	3.8	4.5
90	3.1	3.8
100	2.8	3.4
120	2.4	2.8
150	1.9	2.3
180	1.6	1.9