

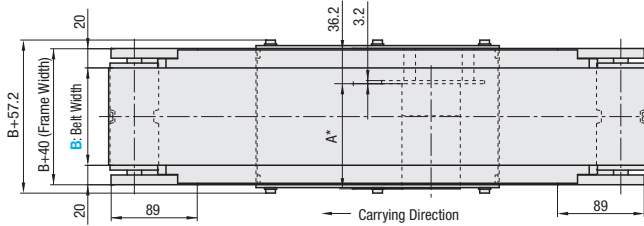
Flat Belt Conveyors

With Meandering Prevention Crosspiece, Center Drive, 3-Groove Frame (Pulley Dia. 50mm)

■ **Features:** The conveyor maintains good running straightness by the use of meandering prevention crosspiece to suppress lateral force induced meandering. With the addition of tapped holes for pulley holders, mounting of optional parts becomes easier than that with CVSW.

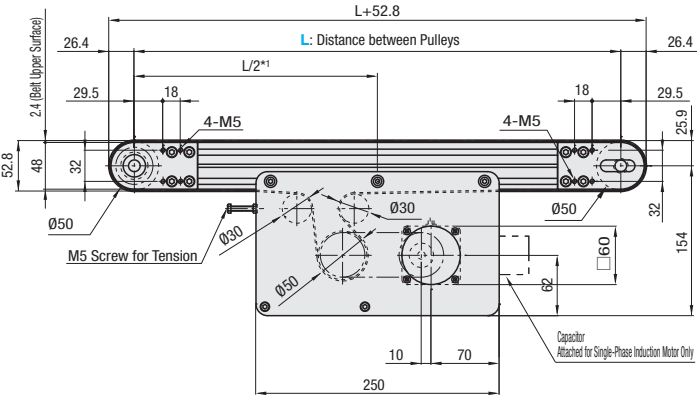
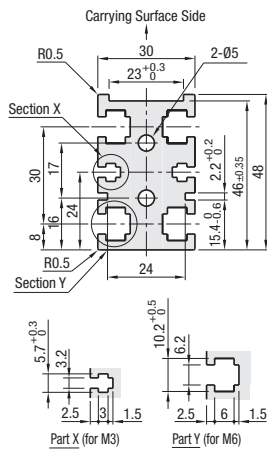


CVGW 6W Motor Type

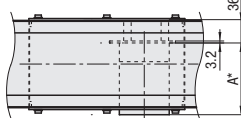


	Frame	Motor Cover①	Motor Cover②	Pulley Holder
M Material	Aluminum	Aluminum	SPCC	Aluminum
S Surface Treatment	Clear Anodize	Paint	Paint	Paint

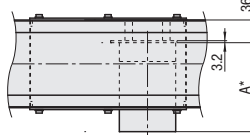
Frame Cross Section and Enlarged View (Symmetrical)



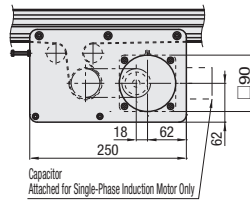
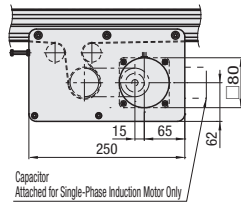
25W Motor Type



40W Motor Type



⚠ Compatible with JIS standard hex nuts.



*1 The drive section can be moved to a desired position within the aluminum extrusion slots.

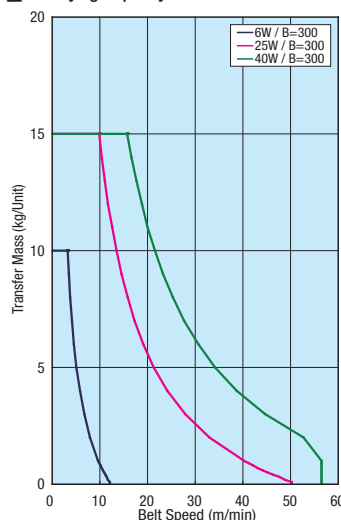
*2 When $L \geq 485$, each slot has four (4) nuts pre-inserted. When counterbores for the nuts are required, please specify in alterations.

⚠ The dimensions in the diagram is for Belt Specifications H (0.8mm THK.). Take note that belt thickness varies by Belt Specifications. For Belt Specifications, see P1279-.

* A Dimension Details

Output (W)	Motor Specification	Manufacturer	Reduction Ratio	A
6W	Induction Motor	Panasonic	12.5-25	101.0
			30-180	108.0
		Oriental	12.5-25	105.0
	Variable Speed Motor	Taiwanese	30-180	115.0
			12.5-75	114.7
		Oriental	90-180	120.7
25W	Induction Motor	Panasonic	12.5-25	115.0
			30-180	125.0
		Taiwanese	12.5-75	126.9
	Variable Speed Motor	Taiwanese	90-180	132.9
			5-18	127.0
		Oriental	25-180	137.5
40W	Induction Motor	Panasonic	5-75	129.0
			90-180	136.0
		Taiwanese	5-18	147.0
	Variable Speed Motor	Taiwanese	25-180	146.5
			5-75	148.5
		Oriental	5-18	142.0
40W	Induction Motor	Panasonic	5-18	147.0
			25-180	165.0
		Taiwanese	5-75	161.6
	Variable Speed Motor	Taiwanese	90-180	170.6
			5-18	157.0
		Oriental	25-180	175.0
40W	Variable Speed Motor	Taiwanese	5-75	172.1
			90-180	181.1

■ Conveying Capacity



*Reference Value may different by selected Belt.

■ Gearhead Reduction Ratio

*May decrease depending on load condition.

Gearhead Reduction Ratio	Belt Speed (m/min)	
	50Hz	60Hz
5	47.1	56.5
7.5	31.4	37.7
9	26.2	31.4
12.5	18.8	22.6
15	15.7	18.8
18	13.1	15.7
25	9.4	11.3
30	7.9	9.4
36	6.5	7.9
50	4.7	5.7
60	3.9	4.7
75	3.1	3.8
90	2.6	3.1
100	2.4	2.8
120	2.0	2.4
150	1.6	1.9
180	1.3	1.6