

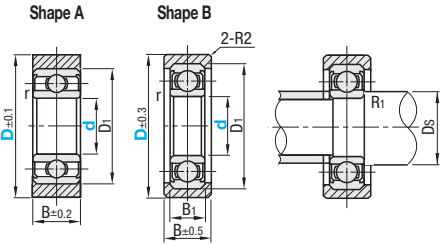
Silicon Rubber / Urethane Molded Bearings

Flat



Urethane (white) may turn yellow over time.

Type Bearing		Material	Hardness	Color	
Steel	Stainless Steel				
UMBBK	UMSBK	Urethane	Shore A95	Black	
UMBBKW	UMSBKW		Shore A90	White	
UMBB	UMSB		Shore A90	Black	
UMBW	UMSW		Shore A70	White	
UMBG	UMSG		Shore A70	Black	
UMBGW	UMSGW		Shore A50	White	
UMBL	-		Shore A50	Black	
UMBLW	-		Shore A50	White	
UMBD	-		Antistatic Urethane	Shore A90	Gray
SUMBB	SUMSB		Silicon Rubber	Shore A70	Light Gray



Bearing Accuracy JIS B 1514, 0 Class

For bearing detailed dimensions, see P989.

Shape A

Part Number	Type	d	D	Allowable Load N (kgf)					B	D ₁	r (min.)	Relative Dimension			Used Bearing	
				Urethane								Silicon	D _s (min.)	D _s (max.)		R1 (max.)
				Shore A95	Shore A90	Shore A70	Shore A50	Shore A70								
Urethane UMBBK UMSBK UMBBKW UMSBKW UMBB UMSB UMBW UMSW UMBG UMSG UMBGW UMSGW UMBL UMBLW	3	10	38(3.8)	28(2.8)	9(0.9)	4(0.4)	7(0.7)	3	7	0.1	3.9	4.1	0.1	W683ZZA		
		12	53(5.4)	34(3.5)	10(1)	6(0.6)	9.8(1)	4	9	0.15	5	5.2	0.2	W684AX50ZZ		
	*4	13	66(6.7)	44(4.5)	13(1.3)	7(0.7)	13(1.3)	4	9	0.15	5	5.2	0.2	624ZZ		
		16	79(8.1)	59(6)	16(1.6)	6(0.6)	18(1.8)	5	13	0.2	5.6	6.2	0.2	WBCS-13Z		
	*5	16	79(8.1)	59(6)	16(1.6)	6(0.6)	18(1.8)	5	13	0.2	5.6	6.2	0.2	625ZZ		
		20	102(10.4)	78(8)	20(2)	9(0.9)	24(2.4)	5	16	0.3	7	7.6	0.3	696ZZ		
	*6	20	114(11.7)	78(8)	23(2.3)	15(1.5)	24(2.4)	5	15	0.2	7.6	7.8	0.2	626ZZ		
		28	218(22.2)	157(16)	44(4.5)	39(4)	47(4.8)	6	19	0.3	8	9.5	0.3	608ZZ		
	*8	28	208(21.2)	157(16)	42(4.3)	35(3.6)	47(4.8)	7	22	0.3	10	12.2	0.3	608ZZ		
		30A	-	176(18)	81(8.3)	65(6.7)	53(5.4)	8	26	0.3	12	13.5	0.3	6000ZZ		
Antistatic Urethane UMBD	10	30A	-	176(18)	81(8.3)	65(6.7)	53(5.4)	8	26	0.3	12	13.5	0.3	6000ZZ		
Silicon Rubber SUMBB *SUMSB	15	40A	-	274(28)	136(13.9)	93(9.5)	82(8.4)	9	30	0.6	14	16	0.6	6200ZZ		
	20	40A	-	274(28)	122(12.4)	96(9.9)	82(8.4)	9	32	0.3	17	19	0.3	6002ZZ		
	15	45A	-	343(35)	109(11.1)	102(10.5)	103(10.5)	11	35	0.6	19	20	0.6	6202ZZ		
	20	45A	-	343(35)	130(13.3)	98(10.1)	103(10.5)	9	37	0.3	22	24	0.3	6904ZZ		
25	55A	-	490(50)	225(22.9)	176(18.1)	147(15)	14	47	1	25	28	1	6204ZZ			
25	65A	-	750(70)	333(34)	250(25.8)	226(23)	15	52	1	30	32	1	6205ZZ			

Only d4 ~ 8 are available for * marked types.

See price chart for available sizes.

Allowable load is for reference.



Ordering Example Part Number - D
UMBB10 - 30A

Shape B

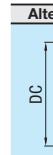
Part Number	Type	d	D	Allowable Load N (kgf)					B	D ₁	B ₁	r (min.)	Relative Dimension			Used Bearing	
				Urethane									Silicon	D _s (min.)	D _s (max.)		R1 (max.)
				Shore A95	Shore A90	Shore A70	Shore A50	Shore A70									
Urethane UMBBK UMSBK UMBBKW UMSBKW UMBB UMSB UMBW UMSW UMBG UMSG UMBGW UMSGW UMBL UMBLW	8	30	248(25.3)	176(18)	81(8.3)	65(6.7)	53(5.4)	11	22	7	0.3	10	12.2	0.3	608ZZ		
		30	201(20.5)	176(18)	94(9.6)	51(5.2)	53(5.4)	11	26	8	0.3	12	13.5	0.3	6000ZZ		
	10	40	412(42)	274(18)	136(13.9)	93(9.5)	82(8.4)	12	30	9	0.6	14	16	0.6	6200ZZ		
		40	369(37.6)	274(18)	122(12.4)	96(9.9)	82(8.4)	12	32	0.3	17	19	0.3	6002ZZ			
	15	45	534(54.5)	343(35)	109(11.1)	102(10.5)	103(10.5)	15	35	11	0.6	19	20	0.6	6202ZZ		
		45	391(39.9)	343(35)	130(13.3)	98(10.1)	103(10.5)	12	37	9	0.3	22	24	0.3	6904ZZ		
	Antistatic Urethane UMBD	20	55	674(68.7)	490(50)	225(22.9)	176(18.1)	147(15)	18	47	14	1	25	28	1	6204ZZ	
	Silicon Rubber SUMBB SUMSB	25	65	999(101.9)	750(70)	333(34)	250(25.8)	226(23)	19	52	15	1	30	32	1	6205ZZ	

See price chart for available sizes.

Allowable load is for reference.



Alterations Part Number - D - (DC)
UMBB6 - 20 - DC18



Alteration	Code	Spec.
DC	DC	0.D. Dimension Changes the D dimension in 1mm increment. D1+2±DC≤D-1 (Ordering Code) DC18

Properties of Antistatic Urethane

Item	Unit	UMBD
Specific Volume Resistivity	Ω · cm	2.1 × 10 ⁸
Surface Resistivity	Ω	4.0 × 10 ⁹

Test Conditions (Temperature 30°C / Humidity 60%)

Listed values are not guaranteed values but an example of measured values.

d	D	Unit Price												
		Steel Bearing							Stainless Steel Bearing					
		Urethane				Antistatic Urethane			Silicon		Urethane		Silicon	
Shore A95	Shore A90	Shore A70		Shore A50			Shore A90	Shore A70	Shore A95	Shore A90	Shore A70	Shore A70		
UMBBK	UMBBKW	UMBW	UMBG	UMBGW	UMBL	UMBLW	UMBD	SUMBB	UMSBK	UMSB	UMSW	UMSG	UMSGW	SUMSB
3	10													
3	12													
4	13													
4	16													
5	16													
5	20													
6	20													
6	28													
6	28													
8	30													
8	30A													
8	30													
10	40													
10	30A													
10	40A													
15	40													
15	45													
15	40A													
15	45A													
20	45													
20	55													
20	45A													
20	55A													
25	65													
25	65A													