

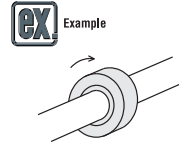
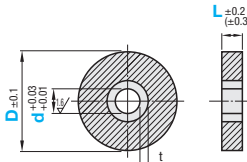
Urethane Rollers with Collars / Knurled Urethane Rollers

Set Screw Type



Type	Material		Hardness
	Core	Lining	
UMC	Aluminum Alloy	Urethane	Shore A90
UMCM		(Natural Color)	Shore A70
UMCL			Shore A50

Urethane is baked on the outer circumference of the core material.



Part Number	Type	D	d Selection	L Selection						t			
				5	10	15	20	25	30				
UMC (Shore A90) UMCM (Shore A70) UMCL (Shore A50)		10	3	5	10	15	20	25	30	2			
		12	3	5	10	15	20	25	30				
		13	4	5	10	15	20	25	30				
		15		5	5	10	15	20	25	30	3		
		16		5 6	5	10	15	20	25	30		40	50
		20		5 6 8	5	10	15	20	25	30		40	50
		25		6 8 10	10	15	20	25	30	40	50	4	
		30		8 10 12 15	10	15	20	25	30	40	50		
		35		8 10 12 15	10	15	20	25	30	40	50		
		40		8 10 12 15	10	15	20	25	30	40	50	5	
		45		10 12 15	10	15	20	25	30	40	50		
		50		10 12 15	10	15	20	25	30	40	50		
		55		10 12 15	15	20	25	30	40	50	5		
		60		10 12 15	20	25	30	40	50				
		70		12 15 20	20	25	30	40	50				
		80		12 15 20	20	25	30	40	50				

Ordering Example: Part Number - d - L
UMC30 - 10 - 20

Alterations: Part Number - d - L - (HRC)
UMC30 - 10 - 20 - HRC
UMCL80 - 15 - 50 - MC

Alteration Code	Parallel Knuris	Tapping
	HRC	MC
Spec.	<p>Straight-line knurling is applied to roller surfaces.</p>	<p>Adds two M3 tapped holes at 90°. Ordering Code MC Applicable to D dim. 20 or more. Not available for t2</p>

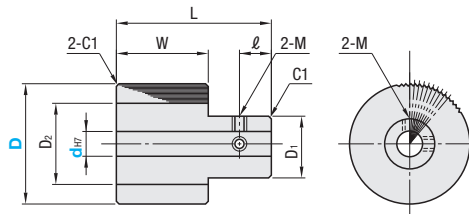
D	Unit Price																								
	UMC					UMCM					UMCL														
	L5	L10	L15	L20	L25	L30	L40	L50	L5	L10	L15	L20	L25	L30	L40	L50	L5	L10	L15	L20	L25	L30	L40	L50	
10																									
12																									
13																									
15																									
16																									
20																									
25																									
30																									
35																									
40																									
45																									
50																									
55																									
60																									
70																									
80																									

Knurled Urethane Rollers - Set Screw Type



Type	Material		Hardness
	Core	Lining	
UMKH	A5052	Urethane (Natural Color)	Shore A90
UMKM			Shore A70
UMKL			Shore A50

Urethane is baked on the outer circumference of the core material.



Part Number	Type	D	dh7	α°	Number of Teeth	D1	D2	W	L	l	M	Unit Price		
												UMKH	UMKM	UMKL
UMKH (Shore A90)	15	4	5	10	36	8	8	10	20	5	M3			
	20	4	5 6	7.5	48	10	15							
	25		6 8	6	60	12								
UMKM (Shore A70)	30		8 10	5	72	16	20	20	35	7.5	M4			
	40		8 10 12	3.75	96									
UMKL (Shore A50)	50		8 10 12	3	120	18	22							

Ordering Example: Part Number - d
UMKM25 - 6