

Plastic Cam Followers

Press Fit

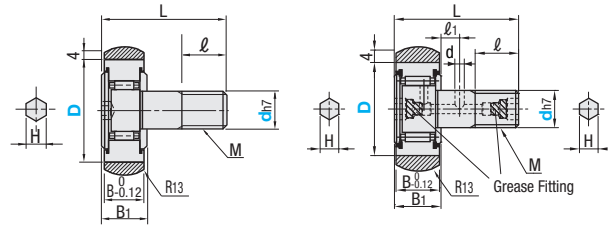
■ **Features:** Plastic is pressed onto the outer ring of the cam follower.



Type		Seal	Material		Accessory
(d5 - 10) Hex Socket on Head	(d12, 16) Hex Socket on Head and Thread		Plastic	Cam Followers	
CFFRUDS	CFRUH	Provided	MC Nylon	SUJ2	1 Hex Nut (S45C Carbon Steel, Black Oxide)
CFFRUSS	CFRUSH			SUS440C Equivalent	Hex Nut 1 pc. (SUS304)

⚠ Operating Temperature 50°C or less (Reference)

■ (d5 - 10) Hex Socket on Head ■ (d12, 16) Hex Socket on Head and Thread



Part Number		D Selectable	MxPitch	B	B ₁	L	d	l	l ₁	H	Allowable Load (N)	Allowable Rotational Speed (rpm)	Mass (g)	Unit Price		
Type	ch7 Tolerance													CFFRUSS	CFFRUDS	CFRUSH
(Hex Socket on Head) CFFRUDS CFFRUSS	5	0	13	5x0.8	9	10	23	7.5	-	3	88	2520	13	-	-	-
	6	-0.012	16	6x1.0	11	12	28				9	112	2210	22	-	-
	8	0	19	8x1.25	12	13	32	11	-	4	122	1960	33	-	-	-
	10	-0.015	22	10x1.25	12	13	36				13	120	1760	50	-	-
(Hex Socket on Head and Thread) CFRUH CFRUSH	12	0	30	12x1.5	14	15	40	3	14	6	156	1390	95	-	-	-
	16	-0.018	32	16x1.5	18	19.5	52				18	8	150	1320	113	-
			35	16x1.5	18	19.5	52	18	8	192	1230	181	-	-	-	-

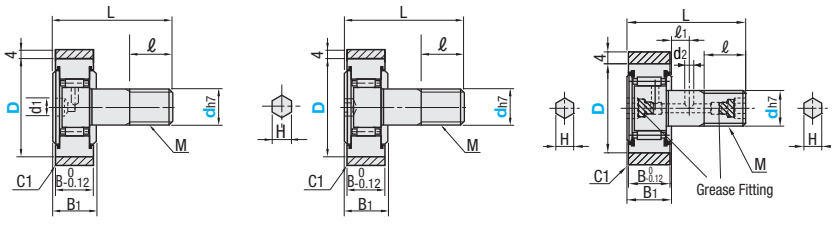
⚠ Values of allowable load are values when speed =10km/h. ⚠ kgf=Nx0.101972
 ⚠ For Standard Type, resin expands and may come off easily in high temperature. Avoid storing in high temperature.
 ⚠ For Hex Socket on Head, no grease replenishing hole is provided.
 ⚠ The standards of d12, 16 has been modified to those with the hex socket on the head and thread.



Type			Seal	Material		Accessory
(d5-10) Straight Slot	(d5-10) Hex Socket on Head	(d12, 16) Hex Socket on Head and Thread		Plastic	Cam Followers	
CFFRUC	CFFRUCS	CFFUH	Provided	MC Nylon	SUJ2	1 Hex Nut (S45C Carbon Steel, Black Oxide)
-	CFFRUCSS	CFFUSH			SUS440C Equivalent	Hex Nut 1 pc. (SUS304)

⚠ Operating Temperature 50°C or less (Reference)

■ (d5 - 10) Straight Slot ■ (d5 - 10) Hex Socket on Head ■ (d12, 16) Hex Socket on Head and Thread



Part Number		D Selectable	MxPitch	B	B ₁	L	d ₁	d ₂	l	l ₁	H	Allowable Load (N)	Allowable Rotational Speed (rpm)	Mass (g)	Unit Price				
Type	ch7 Tolerance														CFFRUC	CFFRUCS	CFFRUCSS	CFFUH	CFFUSH
(Straight Slot) CFFRUC CFFRUCS CFFRUCSS	5	0	13	5x0.8	9	10	23	3.1	7.5	-	3	88	2520	13	-	-	-		
	6	-0.012	16	6x1.0	11	12	28	9				112	2210	22	-	-	-		
	8	0	19	8x1.25	12	13	32	11	-	4	122	1960	33	-	-	-			
	10	-0.015	22	10x1.25	12	13	36				13	120	1760	50	-	-	-		
(Hex Socket on Head and Thread) CFFUH CFFUSH	12	0	30	12x1.5	14	15	40	-	14	6	156	1390	95	-	-	-			
	16	-0.018	32	16x1.5	18	19.5	52				18	8	150	1320	113	-	-	-	
			35	16x1.5	18	19.5	52	18	8	192	1230	181	-	-	-	-			

⚠ Values of allowable load are values when speed =10km/h. ⚠ kgf=Nx0.101972
 ⚠ For Standard Type, resin expands and may come off easily in high temperature. Avoid storing in high temperature.
 ⚠ For Straight Slot, grease hole is provided on the head only. For Hex Socket on Head, no grease replenishing hole is provided.
 ⚠ The standards of d12, 16 has been modified to those with the hex socket on the head and thread.

Ordering Example: Part Number - D
 CFFRUC12 - 32