

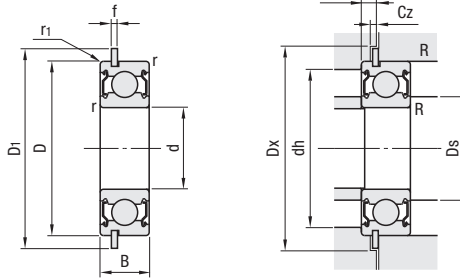
Deep Groove Ball Bearings with Retaining Rings

Double Shielded

B6□□□ZZNR



RoHS 10



Material: SUJ2
Bearing Accuracy: JIS B 1514 Class 0

For details on the tolerance and allowable values of inner and outer rings, see P2243

Part Number	d	D	B	r (min)	r1 (min)	Basic Load Rating			Allowable Rotational Speed		Retaining Ring Dim.		Relative Dimensions						Mass (g) (Reference)	Unit Price
						Cr (Dynamic) kN	Cor (Static) kN	rpm (Reference)	D1 (max)	f (max)	Ds (min)	Ds (max)	dh (max)	R (max)	Dx (min)	Cy (max)	Cz (min)			
B6900ZZNR	10	22	6	0.3	0.3	2.7	1.27	31000	24.8	0.7	12	13	20	0.3	25.5	1.5	0.7	10		
B6000ZZNR		26	8			4.55	1.96	28000	28.7	0.84	12	13.5	24		29.4	1.9	0.9	19		
B6200ZZNR		30	9	0.6	0.6	5.1	2.39	24000	34.7	1.12	14	16	26	0.6	35.5	2.9	1.2	32		
B6300ZZNR	35	11	0.6	0.5	8.1	3.45	22000	39.7	16.5			31	40.5		2.9	52				
B6901ZZNR	12	24	6	0.3	0.3	2.89	1.46	28000	26.8	0.7	17	15	22	0.3	27.5	1.5	0.7	11		
B6001ZZNR		28	8			5.1	2.37	24000	30.7	0.84		16	26		31.5	1.9	0.9	21		
B6201ZZNR		32	10	0.6	0.6	6.8	3.05	22000	36.7	1.12	16	17	28	0.6	37.5	2.9	1.2	37		
B6301ZZNR	37	12	1	0.5	9.7	4.2	20000	41.3	1.12	18	32	1	42	2.9	60					
B6902ZZNR	15	28	7	0.3	0.3	4.35	2.26	23000	30.8		0.85	19	26	0.3	31.5	1.9	0.9	16		
B6002ZZNR		32	9			5.6	2.83	21000	36.7	1.12	19		30		37.5		31			
B6202ZZNR		35	11	0.6	0.6	7.65	3.75	20000	39.7	1.12	19	20	31	0.6	40.5	2.9	1.2	45		
B6302ZZNR	42	13	1	0.5	11.4	5.45	17000	46.3	1.12	20	22.5	37	1	47		83				
B6903ZZNR	17	30	7	0.3	0.3	4.6	2.55	21000	32.8	0.85	19	20	28	0.3	33.5	1.9	0.9	17		
B6003ZZNR		35	10			6	3.25	19000	39.7			21	33	0.3	40.5	2.9	41			
B6203ZZNR		40	12	0.6	0.6	9.55	4.8	17000	44.6	1.12	21	22	36	0.6	45.5	1.2	65			
B6303ZZNR	47	14	1	0.5	13.6	6.65	15000	52.7		22	25.5	42	1	53.5	3.3	113				
B6904ZZNR	20	37	9	0.3	0.3	6.4	3.7	18000	39.8	0.85	22	24	35	0.3	40.5	2.3	0.9	38		
B6004ZZNR		42	12	0.6	0.6	9.4	5	16000	46.3			24	25	38	0.6	47	2.9	67		
B6204ZZNR		47	14	1	1	12.8	6.6	14000	52.7	1.12	25	27	42	1	53.5	3.3	1.2	104		
B6304ZZNR	52	15	1.1	0.5	15.9	7.9	14000	57.9		26.5	28	45.5		58.5		145				
B6905ZZNR	25	42	9	0.3	0.3	7.05	4.55	15000	44.8	0.85	27	29	40	0.3	45.5	2.3	0.9	44		
B6005ZZNR		47	12	0.6	0.6	10.1	5.85	14000	52.7			29	30	43	0.6	53.5	2.9	80		
B6205ZZNR		52	15	1	1	14	7.85	13000	57.9	1.12	30	32	47	1	58.5	3.3	1.2	133		
B6305ZZNR	62	17	1.1	0.5	20.6	11.2	11000	67.7	1.7	31.5	36	55.5		68.5	4.6	1.7	235			
B6906ZZNR	30	47	9	0.3	0.3	7.25	5	14000	49.8	0.85	32	34	45	0.3	50.5	2.3	0.9	52		
B6006ZZNR		55	13	1	1	13.2	8.3	12000	60.7	1.12		35	37	50		61.5	2.9	1.2	116	
B6206ZZNR		62	16			19.5	11.3	11000	67.7	1.7	39		57	1	68.5	4.6	1.7	199		
B6306ZZNR	72	19	1.1		26.7	15	9500	78.6		36.5	42.5	65.5		80		345				
B6907ZZNR	35	55	10	0.6		10.6	7.25	12000	57.8	0.85	39	39	51	0.6	58.5	2.3	0.9	75		
B6007ZZNR		62	14	1		16	10.3	10000	67.7	1.7		40	41.5	57	1	68.5	3.4	1.7	151	
B6207ZZNR		72	17	1.1		25.7	15.3	9500	78.6		41.5	44.5	65.5		80	4.6	284			
B6908ZZNR	40	62	12	0.6		13.7	10	11000	64.8	0.85	44	46	58	0.6	65.5	2.3	0.9	112		
B6008ZZNR		68	15	1	0.5	16.8	11.5	9200	74.6			45	47.5	63		76	3.8	190		
B6208ZZNR		80	18	1.1		29.1	17.9	8500	86.6		46.5	50.5	73.5		88	4.6	366			
B6009ZZNR	45	75	16	1		20.9	15.2	9000	81.6	1.7	50	53.5	70	1	83	3.8	1.7	241		
B6209ZZNR		85	19	1.1		31.5	20.4	7500	91.6		51.5	55.5	78.5		93	4.6	420			
B6010ZZNR		50	80	16	1		21.8	16.6	8500	86.6		55	58.5	75		88	3.8	261		
B6210ZZNR	90		20	1.1		35	23.2	7100	96.5	2.46	56.5	60	83.5		98	5.4	2.5	459		

kgf·Nx0.101972



Ordering Example

Part Number
B6900ZZNR