

# Bearings with Housings

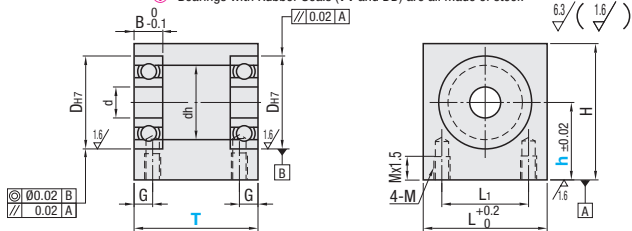
## Bottom Mount Double Bearings



RoHS10

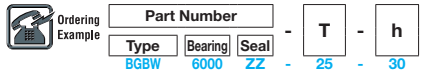
Type			Material	Surface Treatment	Bearing Accuracy: JIS B 1514 Class 0
h Selectable	h Configurable	T, h Configurable Type	Bearing	Housing	Housing
BGBWB	BGBWFB	BGBWTB	Steel	S45C Equivalent	Black Oxide
BGBW	BGBWF	BGBWT		2000 Aluminum Alloy	Electroless Nickel Plating
BGBWA	-	BGBWTA	Stainless Steel	SUS304 Equivalent	Clear Anodize
BGBWSA	-	-		-	-
BGBWS	-	-	-	-	-

Ⓜ Bearings with Rubber Seals (VV and DD) are all made of steel.



Type	Bearing No.	Seal	Width T		Height h	d	Dh7	Tolerance	dh	B	H	L	L1	G	M (Case)							
			1mm Increment	Configurable (mm Increment)																		
h Selectable	623	ZZ Double Shielded	20 30	19-29	31-40	15	20	25	3	+0.015	7	4	h+9	20	10	M4						
	624		20 30			4			13	9	5	h+11	22	14								
	605		20 30	5	14	+0.018	10	5	h+11	24	16	16	12	5	h+12		28	16				
	625		25 30	19-29	31-50	20	20-30	6	17	13	6								h+13	34	22	
	606		25 35	25	35	20	20-30	6	19	15	6	h+14	36	24	8		22	18	7	h+15	38	26
	626		25 35	23-34	36-50	25	30	8	24	20	8	h+16	34	22								
	608		25 35	25	35	25	35	8	22	18	7	h+15	38	26	10		26	19	6	h+15	32	20
	628		25 35	25	40	25	40	10	26	22	8	h+17	38	26								
	6900		25 40	30 40	23-39	41-50	25	30	40	22	+0.021	19	6	h+15	32		20	6	M5			
	6000		25 40	30 40	23-39	41-50	25	30	40	30	0	22	8	h+17	38		26					
6200	30 40	23-39	41-50	25	30	40	24	9	h+19	40	28	12	28	24	8	h+18	40	28				
6901	25 40	30 40	23-39	41-60	30	40	50	32	+0.025	26	10								h+20	42	30	
6001	25 40	30 40	23-39	41-60	30	40	50	28	+0.021	25	7	h+18	42	30	15	32	28	9	h+20	50	36	
BGBWFB	25 50	30 50	23-49	51-60	30	40	50	35	0	29	11	h+22	44	30								
BGBWF	30 50	30 50	26-49	51-60	30	40	50	30	+0.021	27	7	h+19	42	30	7	M6						
6202	35 50	26-49	51-60	30	40	50	35	0	29	11	h+22	44	30									
6903	25 50	30 50	26-49	51-70	35	40	50	37	+0.025	28	9	h+20	50	36	17	35	31	10	h+22	50	36	
6003	25 50	30 50	26-49	51-70	35	40	50	40	0	34	12	h+24	48	36								
T, h Configurable Type	6203	35 50	26-49	51-70	40	50	60	47	+0.025	34	9	h+23	45	31	20	42	40	14	h+28	60	44	
BGBWTB	6904	30 50	26-49	51-80	40	50	60	47	0	36	12	h+25	54	38								
BGBWT	6204	45 50	31-49	51-80	40	50	60	47	0	40	14	h+28	60	44	25	52	45	15	h+31	70	50	
BGBWTB	6004	40 50	31-49	51-80	40	50	60	47	0	41	12	h+28	62	46								
BGBWT	6205	45 60	31-59	61-80	50	60	80	52	+0.030	45	15	h+32	74	54	10	M10						
BGBWTA	6205	40 60	31-59	61-80	50	60	80	55	0	48	13	h+32	74	54								
6206	50 60	39-59	61-100	50	60	80	62	55	16	h+36	82	62										

Ⓜ Check for available sizes in the price list. Ⓜ\* No. 623, 624, 605 and 606 are not available for VV (Non-contact Sealed).



Alterations Code	Bearings Not Assembled	C2 Chamfer	C Chamfer
Spec.	NA	KCC	KCC
	Bearings are shipped unassembled to the housing.	C2 chamfer is done on the top edge surface.	C chamfer (45°) is done on both top edge corners. (Ordering Code) KCC

Ⓜ Applicable to h Configurable Type only.

Ⓜ The price of sealed VV and DD are the price shown in the table multiplied by 1.1.

Bearing No.	Seal	h Selectable Unit Price					h Configurable Unit Price		T, h Configurable Unit Price														
		BGBWB	BGBW	BGBWA	BGBWSA	BGBWS	BGBWFB	BGBWF	BGBWTB		BGBWT		BGBWTA										
		Range①	Range②	Range①	Range②	Range①	Range②	Range①	Range②	Range①	Range②	Range①	Range②										
623																							
624																							
605																							
625																							
606																							
626																							
608																							
628																							
6900																							
6000																							
6200	ZZ (x1.0)																						
6901																							
6001	VV (x1.1)																						
6201																							
6902																							
6002	DD (x1.1)																						
6202																							
6903																							
6003																							
6203																							
6904																							
6004																							
6204																							
6005																							
6205																							
6006																							
6206																							