

Bearings with Housings - Low Dust Generation Grease Filled

T-Shaped Double Bearings

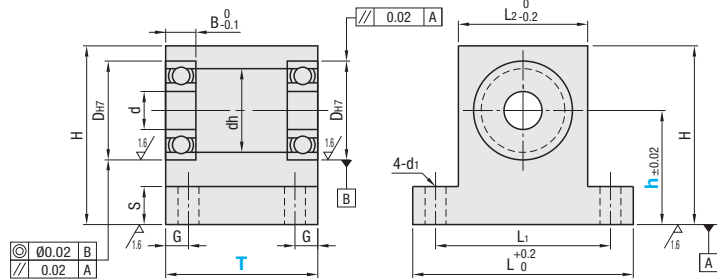


RoHS10

Type		Material		Surface Treatment
h Selectable	h Configurable	Bearing	Housing	Housing
S-BGHWSA	S-BGHWFS	Stainless Steel	2000series Aluminum Alloy	Clear Anodize
S-BGHWWS	-	-	SUS304	-

Bearing Accuracy: JIS B 1514 Class 0

6.3 / (1.6 /)



Part Number	Type	Bearing No.	T Selection	h		d	Dh7	Tolerance	dh	B	H	L	L1	L2	G	S	d1	Unit Price					
				Selectable	Configurable 1mm Increment													h Selectable	S-BGHWWS	S-BGHWFS			
h Selectable S-BGHWWSA S-BGHWWS		606ZZ	25 35	20 25 30	15-30	6	17	+0.018 0	13	6	h+13	47	35	23	6	10	5.5						
		626ZZ	25 35						15	6	h+14	49	37	25									
		608ZZ	25 35						18	7	h+15	53	41	29									
		628ZZ	25 35						20	8	h+16	56	44	32									
		6900ZZ	25 40	20 30 40	15-40	10	22	+0.021 0	19	6	h+15	53	41	29									
		6000ZZ	25 40						22	8	h+17	58	46	34									
		6200ZZ	30 40	24	9	h+19	62	50	38														
		6901ZZ	25 40	24	6	h+16	56	44	32														
		6001ZZ	25 40	24	8	h+18	60	48	36														
		6201ZZ	30 40	28	10	h+20	64	52	40														
h Configurable S-BGHWFS		6902ZZ	25 50	30 40 50	20-50	12	28	+0.025 0	26	10	h+18	60	48	36	7	15	6.5						
		6002ZZ	30 50						28	9	h+20	68	54	40									
		6202ZZ	35 50						29	11	h+22	72	58	44									
		6903ZZ	25 50						27	7	h+19	64	52	38									
		6003ZZ	30 50	30	9	h+21	70	56	42														
		6203ZZ	35 50	31	10	h+22	76	62	49														
		6904ZZ	35 50	34	9	h+23	73	59	45														
		6004ZZ	40 50	37	12	h+24	82	66	50														
6204ZZ	45 50	40	14	h+28	88	72	56																

• Low Dust Generation Bearings P1009



Ordering Example

Part Number	T	h
S-BGHWWS6901ZZ	40	30
S-BGHWFS6000ZZ	25	35

For S-BGHWFS, add a dash before the bearing number, as shown above.



Alterations



Part Number	T	h	(NA, KCC, KKC)
S-BGHWFS6002ZZ	50	30	KKC

Alterations	Bearings Not Assembled	C2 Chamfer	C Chamfer
Code	NA	KCC	KKC
Spec.	Bearings are shipped unassembled to the housing.	C2 chamfer is done on the top edge surface.	C chamfer (45°) is done on both top edge corners. Ordering Code: KKC Applicable to h Configurable Type only.