

Bearings with Housings

Double Bearings with Pilot, Retained, L Configurable



Type			Material		Surface Treatment		Accessory
Round	Square	Compact	Bearing	Housing	Bearing	Housing	Retaining Ring
BGFRZB	-	BGFCZB	Steel	S45C	Black Oxide		Spring Steel
BGFRZ	BGFSZ	BGFCZ		Equivalent	Electroless Nickel Plating		
BAFRZ	-	-		2000Series	Clear Anodize		
SBAFRZ	-	SBAFCZ	Stainless Steel	Aluminum Alloy			SUS304

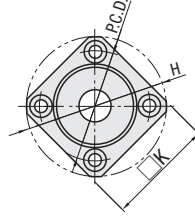
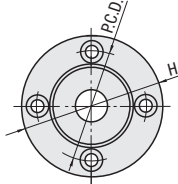
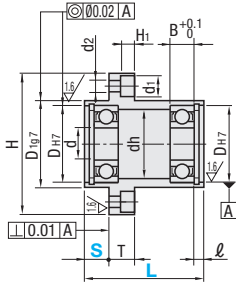
* Bearings with Rubber Seals (VV and DD) are all made of steel.

6.3 / (16 /)

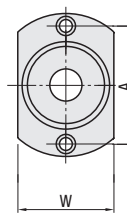
Round

Square

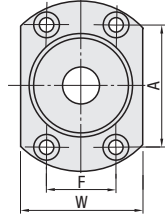
Compact



d3-17



d20-50



Bearing Accuracy: JIS B 1514 Class 0

Part Number			1mm Increment		d	Dh7	Tolerance	B	ℓ	H	W	T	dh	D197	Tolerance	P.C.D.	K	A	F	d1	d2	H1		
Type	Bearing No.	Seal	L	S																				
Round	623	ZZ Double Shielded	20-40	5-28	3	10	+0.015	4	2.65	33	16	7	7	14	-0.006	24	27	24	6.5	3.5	3.1			
	624		20-40	5-28	4	13	-0.024	5	2.65	35	18	9	17	26	28	26								
	605		20-40	5-27	5	14	+0.018	5	2.65	38	20	10	18	28	30	28								
	625		30-40	10-22	5	16	0	5	2.65	40	22	12	20	30	31	30								
	606		20-40	5-27	6	17	-0.007	6	2.65	41	23	13	21	31	32	31								
	626		30-50	10-32	6	19	-0.028	6	2.65	44	25	15	24	34	34	34								
	698		25-50	5-37	8	19	0	6	2.65	44	25	15	24	34	34	34								
	608		20-50	5-37	8	22	+0.021	7	2.65	47	29	18	27	37	36	37								
	628		30-50	10-32	8	24	0	8	2.85	50	32	20	30	40	37	40								
	6800		20-40	5-27	10	19	+0.021	5	2.65	44	25	8	15	24	34	34	8	4.5				4.1		
	6900		25-60	5-47	10	22	0	6	2.65	47	29	19	27	37	36	37								
	6000		30-60	10-42	10	26	-0.009	8	2.85	52	34	22	32	42	39	42								
6200	40-60	15-37	10	30	-0.034	9	2.85	56	38	24	36	46	42	46										
6801	25-50	5-37	12	21	-0.007	5	2.85	47	29	17	26	37	36	37										
6901	30-60	10-42	12	24	-0.028	6	2.85	50	31	21	30	40	38	40										
6001	30-60	10-42	12	28	-0.009	8	2.85	54	36	24	34	44	40	44										
6201	40-70	15-47	12	32	-0.034	10	2.85	58	40	26	38	48	43	48										
6802	25-60	10-42	15	24	+0.021	5	2.85	50	32	20	30	40	37	40										
6902	30-70	10-50	15	28	0	7	2.85	59	37	25	35	47	45	47										
6002	40-70	15-45	15	32	+0.025	9	2.85	62	40	28	38	50	46	50										
6202	40-70	15-45	15	35	0	11	3.75	66	44	29	42	54	49	54										
Square	6903	*1/2 VV Non-Contact Sealed Rubber Seal	40-70	15-45	15	30	+0.021	7	2.85	60	38	10	27	36	-0.009	48	46	48	9.5	5.5	5.1			
	6003		40-70	15-45	17	35	0	10	3.75	66	44	31	42	54	50	54								
	6203		50-70	20-40	17	40	-0.034	12	3.95	72	50	34	48	60	54	60								
	6804		35-70	10-50	20	32	+0.025	7	3.75	62	40	28	38	50	46	44	24							
	6904		45-70	15-44	20	37	0	9	3.75	72	47	34	45	59	54	54	24							
	6004		55-80	20-49	20	42	+0.025	12	3.95	77	54	36	50	64	59	56	32							
	6204		55-80	20-49	25	47	0	14	3.95	81	58	40	54	68	62	59	34							
	6805		35-70	15-44	25	37	-0.009	7	3.75	72	47	34	45	59	54	54	24							
	6905		35-70	15-44	25	42	-0.034	9	3.95	77	54	36	50	64	59	55	32							
	6005		55-80	20-47	25	47	-0.010	12	3.95	88	58	41	54	72	67	63	36							
	6205		55-80	20-47	25	52	+0.030	15	4.2	94	64	45	60	78	72	68	39							
	6806		35-70	15-42	30	42	+0.025	7	3.95	77	54	11	36	50	64	59	56	32						
6906	35-70	15-42	30	47	0	9	3.95	88	58	41	54	72	67	62	36									
Compact	6006	*2 DD Contact Sealed Rubber Seal	55-80	20-47	30	55	+0.025	13	4.2	96	66	13	48	62	-0.010	80	73	70	40	14	9	8.1		
	6206		55-120	20-87	30	62	0	16	4.2	104	74	55	70	88	79	77	44							
	6007		55-120	20-87	35	62	+0.030	14	4.2	104	74	55	70	88	79	75	44							
	6207		55-120	20-87	35	72	0	17	6	126	88	20	64	84	105	95	92	51	17.5				11	11
	6008		65-120	25-82	40	68	-0.047	15	5.2	114	82	13	60	78	96	86	80	54	14				9	8.1
	6208		65-120	25-82	40	80	-0.012	18	6	134	96	74	92	113	102	98	56	113	-				98	56
	6010		65-120	25-82	40	80	-0.047	16	6	134	96	74	92	113	-	98	56							
	6210		70-120	25-82	50	90	+0.035	20	7	147	110	83	106	126	-	104	72							

* Check for available sizes in the price list.

*1 No. 623, 624, 605 and 606 are not available for VV (Non-contact Sealed).

*2 Bearings with Rubber Seals are all made of steel.