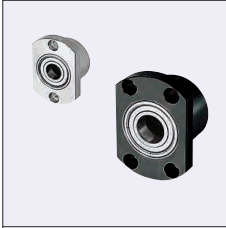


# Bearings with Housings

## Double Bearings, Non-Retained, L Selectable



Type			Material		Surface Treatment	
Round	Square	Compact	Bearing	Housing	Bearing	Housing
BGRCB	BGSCB	BGCCB	Steel	S45C	Black Oxide	
BGRC	BGSC	BGCC		Equivalent	Electroless Nickel Plating	
BARC	BASC	BACC		2000series	Clear Anodize	
SBARC	SBASC	SBACC		Aluminum Alloy		
SBRC	SBSC	SBGCC	*Stainless Steel	SUS304		

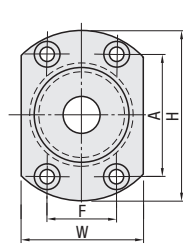
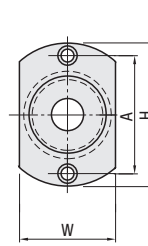
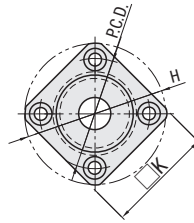
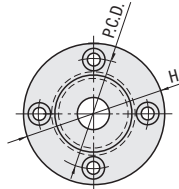
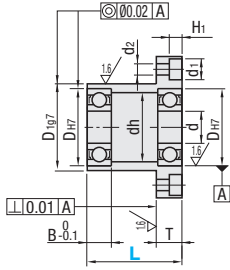
\* Bearings with Rubber Seals (VV and DD) are all made of steel.

6.3 / ( 1.6 / )

Round

Square

Compact



Bearing Accuracy: JIS B 1514 Class 0

Type	Part Number		L	d	DH7	Tolerance	B	H	W	T	dh	D197	Tolerance	P.C.D.	K	A	F	d1	d2	H1
	Type	Bearing No.																		
(Round)	BGRCB	623	20 30	3	10	+0.015	4	33	16	7	7	14	-0.006	24	27	24		6.5	3.5	3.1
	BGRC	624	20 30	4	13		5	35	18		9	17	-0.024	26	28	26				
	BARC	605	25 30	5	14	+0.018	5	36	20		10	18		26	30	26		8	4.5	4.1
	SBARC	625	25 30	5	16	0	5	38	22		12	20	-0.007	28	31	28				
	SBRC	606	20 35	6	17		6	39	23		13	21	-0.028	29	32	29				
	BGCCB	626	25 35	6	19	+0.021	6	41	25		15	24		31	34	31		6.5	3.5	3.1
	BGSCB	678	20 30	8	12	+0.018	3.5	34	18		10	16	-0.006	25	27	25				
	BGSC	698	25 35	8	19	0	6	41	25		15	24	-0.024	31	34	31				
	BASC	608	25 35	8	22	+0.021	7	45	29		18	27		35	36	35				
	BACC	628	25 35	8	24	0	8	47	32		20	30	-0.007	37	37	37				
	SBACC	6700	20 30	10	15	+0.018	4	37	22		12	19	-0.028	27	30	27				
	SBGCC	6800	20 30	10	19	0	5	41	25		15	24		31	34	31				
		6900	25 40	10	22	+0.021	6	45	29		19	27		35	36	35				
		6000	25 40	10	26	0	8	50	34		22	32	-0.009	40	39	40				
		6200	30 40	10	30		9	54	38		24	36	-0.034	44	42	44				
		6701	20 30	12	18	+0.018	4	40	25		15	23		30	31	30		8	4.5	4.1
		6801	25 35	12	21	+0.021	5	44	29		17	26	-0.007	34	35	34				
		6901	25 40	12	24	0	6	48	31		21	30	-0.028	38	38	38				
		6001	25 40	12	28		8	52	36		24	34	-0.009	42	40	42				
		6201	30 40	12	32	+0.025	10	56	40		26	38	-0.034	46	43	46				
	6702	25 35	15	21	+0.021	4	44	29		18	26	-0.007	34	35	34					
	6802	25 35	15	24	0	5	47	32		20	30	-0.028	37	37	37					
	6902	25 50	15	28		7	57	37		25	35		45	45	45					
	6002	30 50	15	32	+0.025	9	60	40		28	38		48	46	48					
	6202	35 50	15	35	0	11	64	44		29	42		52	49	52					
	6803	30 40	17	26	+0.021	5	50	34		22	32		40	39	40					
	6903	30 40	17	30	0	7	60	38		27	36	-0.009	48	46	48					
	6003	35 50	17	35	+0.025	10	66	44		31	42	-0.034	54	50	54					
	6203	40 50	17	40	0	12	72	50		34	48		60	54	60					
	6704	30 40	20	27	+0.021	4	51	35		23	33		41	39	32	25	8	4.5	4.1	
	6804	35 50	20	32		7	60	40		28	38		48	46	38	29	9.5	5.5	5.1	
	6904	35 50	20	37	+0.025	9	69	47		34	45		56	54	51	24				
	6004	40 50	20	42	0	12	77	54		36	50		64	59	56	32				
	6204	45 50	20	47	+0.025	14	81	58		40	54	-0.010	68	62	59	34				
	6805	35 50	25	37	0	7	69	47		34	45	-0.009	56	54	51	24				
	6905	35 50	25	42		9	77	54		36	50	-0.034	64	59	56	32				
	6005	40 60	25	47		12	88	58		41	54	-0.010	72	67	63	36				
	6205	45 60	25	52	+0.030	15	94	64		45	60	-0.040	78	72	68	39				
	6806	35 50	30	42	+0.025	7	77	54		36	50	-0.034	64	59	56	32	11	6.6	6.1	
	6906	35 50	30	47	0	9	88	58		41	54		72	67	63	36				
	6006	40 60	30	55		13	96	66		48	62	-0.010	80	73	70	40				
	6206	50 60	30	62		16	104	74		55	70	-0.040	88	79	77	44				
	6807	50 60	30	62		14	104	74		55	70		88	79	75	44				
	6207	60 80	35	72	+0.030	17	126	88		20	64	-0.010	105	95	92	51	17.5	11	11	
	6008	60 70	40	68	0	15	114	82		13	60	-0.010	96	86	80	54	14	9	8.1	
	6208	60 80	40	80		18	134	96		18	74		113	102	98	56				
	6010	70	50	80		16	134	96		20	74	-0.012	113	-	98	56	17.5	11	11	
	6210	90	50	90	+0.035	20	147	110		83	106	-0.047	126	-	104	72				

Check for available sizes in the price list.

\*1 No. 623, 624, 605, 606 and numbers starting with 67 are not available for VV (Non-contact Sealed).

\*2 Bearings with Rubber Seals are all made of steel.