

Bearings with Housings

Retained



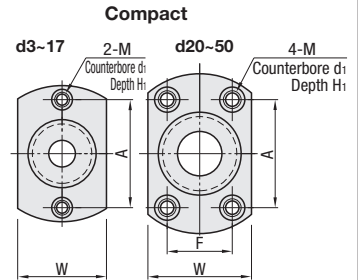
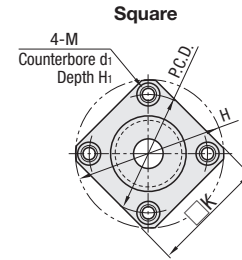
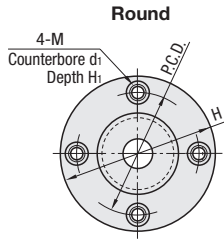
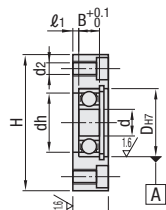
Type			Material		Surface Treatment		Accessory
Round	Square	Compact	Bearing	Housing	Housing	Housing	Retaining Ring
BGRAB	BGSAB	BGCAB	Steel	S45C	Black Oxide	Spring Steel	SUS304
BGRA	BGSA	BGCA		Equivalent	Electroless Nickel Plating		
BARA	BASA	BACA	* Stainless Steel	2000series Aluminum Alloy	Clear Anodize		
SBARA	SBASA	SBACA					
SBGRA	SBGSA	SBGCA	Steel	SUS304	-		

* Bearings with Rubber Seals (VV and DD) are all made of steel.

Bearing Accuracy: JIS B 1514 Class 0

$$\sqrt[6.3]{\left(\frac{1.6}{\sqrt{\quad}}\right)}$$

RoHS 10



* Mounting holes are tapped and counterbored so the housing can be mounted from either side.

Part Number			d	DH7	Tolerance	B	H	W	T	ℓ1	dh	P.C.D.	K	A	F	M (Coarse (d2))	d1	H1	
Type	Bearing No.	Seal																	
(Round)	623	ZZ Double Shielded	3	10	+0.015	4	33	16	9	2	7	24	27	24		M4 (3.3)	6.5	3.4	
	624		4	13	+0.018	5	35	18	10		9	26	28	26					
	605		5	14		5	36	20	10		10	26	30	26					
	625		6	5	16	0	5	38	22		10	12	28	31					28
	606			5	17	6	39	23	11		13	29	32	29					
	626		8	6	19	+0.021	6	41	25		11	15	31	34					31
	698			6	19		6	41	25		11	15	31	34					31
	608		10	8	22	0	7	45	29		12	18	35	36					35
	628			8	24		8	47	32		13	20	37	37					37
	6800		12	19	19	+0.021	5	41	25		10	15	31	34					31
	6900			10	22		6	45	29		11	19	35	36					35
	6000		15	10	26	0	8	50	34		13	22	40	39					40
6200	10	30		9	54		38	14	24	44	42	44							
6801	17	12	21	+0.025	5	44	29	10	17	34	35	34							
6901		12	24		6	48	31	11	21	38	38	38							
6001	20	12	28	0	8	52	36	13	24	42	40	42							
6201		12	32		10	56	40	15	26	46	43	46							
6802	25	15	24	+0.021	5	47	32	10	20	37	37	37							
6902		15	28		7	57	37	12	25	45	45	45							
6002	30	15	32	+0.025	9	60	40	14	28	48	46	48							
6202		15	35		11	64	44	17	29	52	49	52							
6903	35	17	30	+0.021	7	60	38	12	27	48	46	48							
6003		17	35		10	66	44	16	31	54	50	54							
6203	40	17	40	+0.025	12	72	50	18	34	60	54	60							
6804		20	32		7	60	40	12	28	48	46	38							
6904	45	20	37	0	9	69	47	15	34	56	54	51							
6004		20	42		12	77	54	18	36	64	59	56							
6204	50	25	47	+0.030	14	81	58	20	40	68	62	59							
6805		25	37		7	69	47	13	34	56	54	51							
6905	55	25	42	+0.025	9	77	54	15	36	64	59	56							
6005		25	47		12	88	58	18	41	72	67	63							
6205	60	30	52	0	15	94	64	22	45	78	72	68							
6806		30	42		7	77	54	13	36	64	59	56							
6906	65	30	47	+0.025	9	88	58	15	41	72	67	63							
6006		30	55		13	96	66	20	48	80	73	70							
6206	70	35	62	+0.030	16	104	74	23	55	88	79	77							
6007		35	62		14	104	74	21	55	88	79	77							
6207	75	35	72	0	17	126	88	26	3	64	105	95							
6008		40	68		15	114	82	23	2	60	96	86	80						
6208	80	40	18	+0.035	18	134	96	27	3	74	113	102							
6010		40	80		16	134	96	25	3	74	113	-							
6210	50	90	20	147	110	31	4	83	126	-	104								

* Check for available sizes in the price list.

*1 No. 623, 624, 605 and 606 are not available for VV (Non-contact Sealed).

*2 Bearings with Rubber Seals are all made of steel.