

Pivot Pins / Keys for Precision Pivot Pins

Keyway

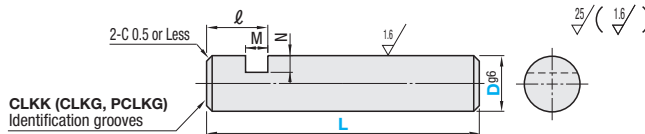


RoHS10

Type		M Material	H Hardness	S Surface Treatment
L Dimension Selectable	L Dimension Configurable			
CLKK	CLKG	S45C (CLKK) S45C Equivalent (CLKG)	-	Black Oxide
CLKKH	CLKGHH	S45C (CLKKH) S45C Equivalent (CLKGHH)	40-45HRC	Black Oxide
-	PCLKG	S45C Equivalent (PCLKG) (PCLKGH) (GCLKG)	-	Electroless Nickel Plating
-	PCLKGH	L Dimension Selectable	40-45HRC	Electroless Nickel Plating
-	GCLKG	CLKGH Type is S45C Equivalent.	Plating Hardness 750HV-	Hard Chrome Plating
SCLKK	SCLKG	SUS304 Equivalent	-	-
-	SCLKGH	SUS440C Equivalent	45 - 50HRC	-

CLKK has identification grooves on the side in order to distinguish it from Hardened Type. (CLKG and PCLKG may also have identification grooves.)
 This type may have centering holes depending on dimensions.
 For L Dimension, Standard Machining Tolerances (Class: Medium) is used.

D Tolerance (g6)	
3	-0.002 -0.008
4-6	-0.004 -0.012
8, 10	-0.005 -0.014
12-18	-0.006 -0.017
20-25	-0.007 -0.020



CLKK (CLKG, PCLKG) Identification grooves

L Dimension Selectable

Part Number	D	L Selection			ℓ	M	N	Unit Price		
Type		CLKK	CLKKH	SCLKK				CLKK	CLKKH	SCLKK
CLKK CLKKH (Hardened)	3	10 14 18 20	12 20	10 15 20	8	2.5	1			
	4	10	10 18 20	10 12 14 15 20						
	5	20	10 12 20	10 20						
	6	15 16 20 30	24 25 30	25 30			2			
	8	18 30 35 40 45 50	24 25 30 35 40 45 50	20 22 35 40 45 50						
	10	30 35 40 45 50	20 24 30 35 40 45 50	25 30 35 40 45 50						
SCLKK (Stainless Steel)	12	24 30 35 40 45 50	30 35 40 45 50	30 35 40 45 50						

L Dimension Configurable

Part Number	D	L=0.1mm Increment	ℓ	M	N	Unit Price						
Type						CLKG	CLKGHH	PCLKG	PCLKGH	GCLKG	SCLKG	SCLKGH
CLKG CLKGHH PCLKG PCLKGH GCLKG SCLKG SCLKGH	3	10.0~ 50.0	8	2.5	1							
	4											
	5											
	6	25.0~200.0			2							
	8											
	10											
	12	30.0~200.0	3.7	3								
	13											
	14											
	15											
	16											
	17											
	18											
	20											
	22											
25												

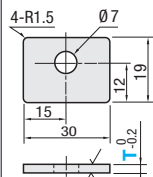
SCLKGH may be discolored by hardening. Part Number CLKGH has been changed to CLKGHH.

Ordering Example	Part Number	- L
	CLKK8	- 30
	CLKG15	- 120.3

Keys for Precision Pivot Pins

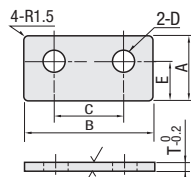


1-Hole Type
HPK
SHPK (Stainless Steel)



HPK, WHPK
 M Material: SPCC
 S Surface Treatment: Black Oxide

2-Hole Type
WHPK
WSHPK (Stainless Steel)



SHPK, WSHPK
 M Material: SUS304-CP

Part Number	Unit Price	Volume Discount Rate
Type	T	1-29 pcs 30-200
HPK	2	
	3.2	
SHPK	2	
(Stainless Steel)	3	

For orders larger than indicated quantity, please check with WOS.

Part Number	WHPK					WSHPK					
Type	No.	A	B	C	D	E	T	Unit Price	Volume Discount Rate	Unit Price	Volume Discount Rate
								1-29 pcs	30-200	1-29 pcs	30-200
WHPK WSHPK (Stainless Steel)	4	10	18	10	4.5	6	2.0				
	5	14	24	15	5.5	8					
	6	16	30	18	6.5	10	3.2 (3.0)				
	7	20	40	25	7	12	2.0 (3.2 (3.0))				

() are the dimensions for WSHPK plate thickness T. For orders larger than indicated quantity, please check with WOS.