

Lead Screw Support Units Square Type

Support Side



Support Side Support Unit can be purchased as the separate unit. Instead of this, however, purchasing it in combination with Fixed Side Support Unit (P.791) as set is the more economical.



RoHS 10

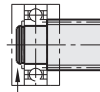
This is the same product as Support Side Set in P.791

Number	Part Name	Quantity
①	Housing	1
②	Radial Bearing	1
③	Retaining Ring for Shaft (Included)	1

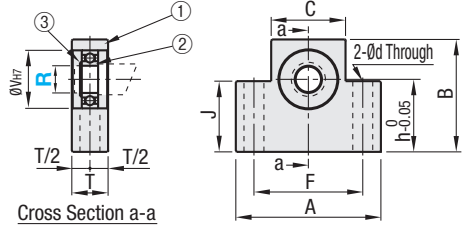
Contrary to image on the photo, Radial Bearing on ②, as well as Retaining Ring for Shaft, is already included with the support unit when the support unit is shipped.

Type	M Material	S Surface Treatment
MTUZ	S45C	Black Oxide

How to use Retaining Ring for Shaft



Retaining Ring for Shaft (Accessory) should be used for fixing the shaft part. Use Lead Screws for Support Units (P.789) in combination with this ring, or select a product with the retaining shaft groove added on the shaft part.



Cross Section a-a

Part Number	Type	R	A	B	C	F	h	J	V	T	d	Bearing Type	Retaining Ring for Shaft	MTUZ	
														Unit Price	Volume Discount Rate
														1 ~ 4 pc(s).	5 ~ 10 pcs.
MTUZ		8	52	48	25	38	30	35	22	20	6.6	B608ZZ	NETW5		
		10	70	53	36	52	35	34	26		9	B6000ZZ	STWN10		
		12	70	58	36	52	40	39	28		9	B6001ZZ	STWN12		
		15	80	62	41	60	40	39	32		11	B6002ZZ	STWN15		

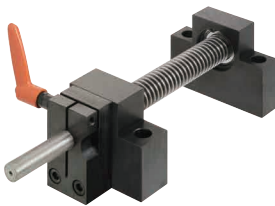


Ordering Example Part Number MTUZ15

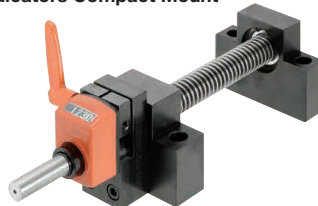


Example

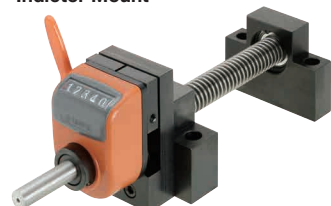
Stop Plate Set



Stop Plate Set for Digital Position Indicators Compact Mount



Stop Plate Set for Large Position Indicator Mount



Position Indicators are separately sold. P. 811, 812

Easy Assembly Design Dimensions Table

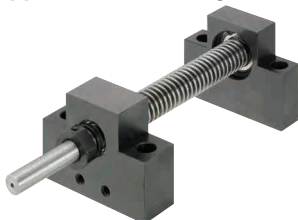
Lead Screw			Lead Screw Support Units				Position Indicator Compact / Large		
Type	Shaft Dia.	Pitch	Fixed Side		Support Side		Type	Spindle Pitch	Alterations
			Type	Bearing I.D.	Type	Bearing I.D.			
MTW (L) K MTWB (L) K RMTW (L) K MTSW (L) K	12	2	MTWZ MTWZ-S MTWZ-CP MTWZ-LP	Q	MTUZ	R	D□□□□-	2	-CSE6
	14	3		8		8		3	-CSE8
	16	3		10		10		3	-CSE10
	18	4		12		12		4	-CSE10
	20	4		15		15		4	-CSE12
	22	5						5	-CSE12
	25	5				5	-CSE12		

By adding to (L) to a part number, the Reverse Screw Type is delivered. For position indicators, this Screw Type should be specified.

*For Digital Position Indicators Large, Spindle Pitch 2 cannot be selected.

Precaution for Use: Use the position indicators within maximum rotational speed. P. 811, 812

Support Unit Mounting Procedure



- Insert the lead screw shaft into the fixed side support unit.
- After slipping a collar on, thread the included bearing nut on and temporarily tighten at 1/3 of the specified tightening torque. Mount the support side unit on the support end of the shaft and mount.
- While rotating the screw shaft, gradually tighten the bearing nut to obtain smooth motion from end to end.
- When smooth motion is obtained, tighten to full tightening torque to finish.

M	Nut Tightening Torque (N · cm)	Part Number
8	490	BNR8
10	930	BNR10
12	1370	BNR12
15	2350	BNR15

Value is for reference only.