

Precision Ball Screws Standard Nut - Shaft Dia. 25, Lead 5, 10, 20 Accuracy Grade C5, C7

Points of comparison between similar products | Consider using this product if the usage environment is a high-load, and high-frequency drive application.

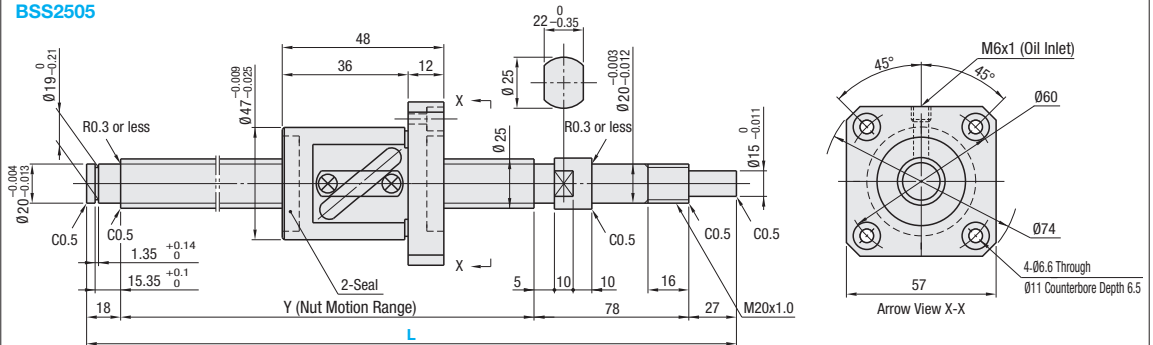


RoHS 10

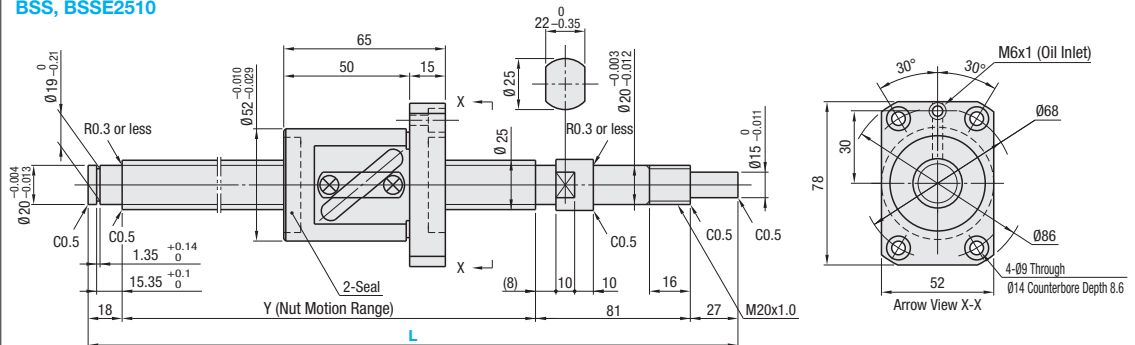
Nut Type	Type	Accuracy Grade	Shaft Dia.	Lead	Screw Shaft		Nut	
					Material	Hardness	Material	Hardness
Standard Nut	BSS	C5	25	5, 10, 20	AISI4150	Induction Hardened 58-62HRC	SCM420	Carburized 58-62HRC
	BSSE	C7		10, 20				

Ball bearings will fall out if the ball nut crosses the wrench flats.

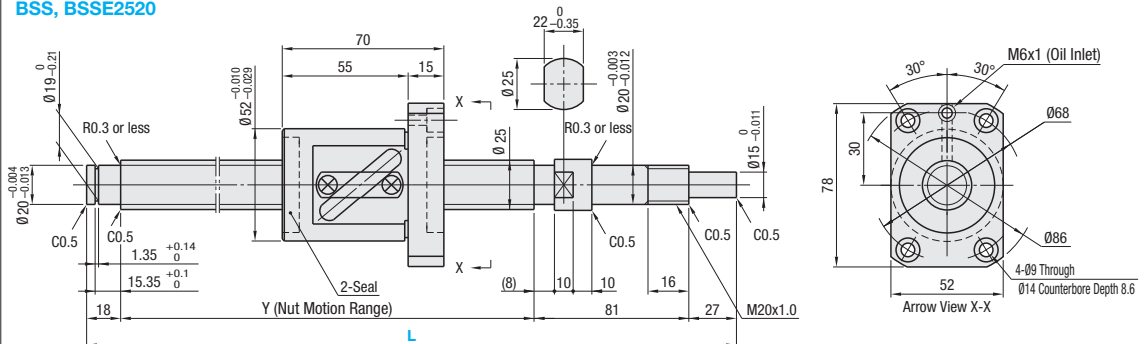
BSS2505



BSS, BSSE2510



BSS, BSSE2520



Nut Type	Accuracy Grade	Part Number		1mm Increment	Y	Ball Dia.	Ball Center Dia.	Screw Root Dia.	Number of Circuits	Basic Load Rating		Axial Play	Preload Torque N·cm	Twisting Direction	
		Type	Screw Shaft O.D.							Lead	L				C (Dynamic) kN
Standard Nut	C5	BSS	25	05	300-995	L-123	3.175	25.8	(22.5)	2.5 turns 1 row	9.4	22.2	0.005 or Less	6.0 or Less	Right
	C5	BSS		10	300-1500	L-126					4.7625	26	(21)	16.1	
	C7	BSSE		10	300-1500	L-126	(21)	1.5 turns 1 row	10.4	20.1					
	C5	BSS		20	300-1500	L-126					0.005 or Less	6.0 or Less			
C7	BSSE	20	300-1500	L-126	0.030 or Less	-									

Kgf=Nx0.101972