

Cable Carriers

Slit Type

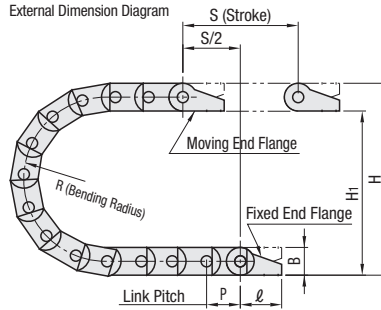


Cable link assembly is not required. **RoHS10**

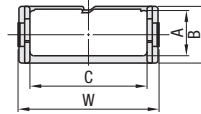
Outer Radius Mount Main Body + Flange	Inner Radius Mount Main Body + Flange
SE045F	SZ045F
SE08F	SZ08F
SE14F	SZ14F
SE16F	SZ16F

<Cautions>

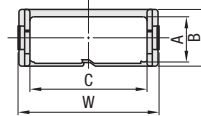
- ⚠ A package includes a cable carrier assembled with specified number of links and two corresponding flanges (1 Moving End + 1 Fixed End).
- ⚠ Install the flange fixed end on the lower side, and moving end on the upper side. (Refer to the Positional Relationship in External Dimension Diagram)
- ⚠ Insert cables through slits (openings) on the outer or inner circumference.



Cross Section View
Outer Radius Mount



Inner Radius Mount

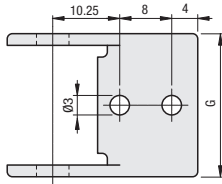


M Material : Special Plastic Operating Temp: -30°C ~ 100°C Flammability Standard UL94-V2

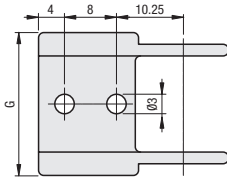
Flange Dimension Diagram

SE045F, SZ045F

<Moving Ends>

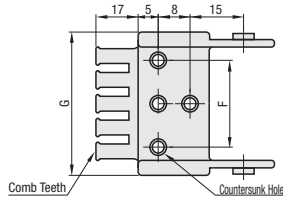
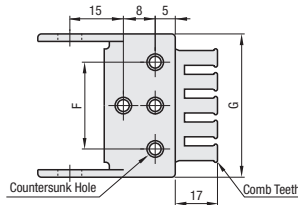


<Fixed Ends>

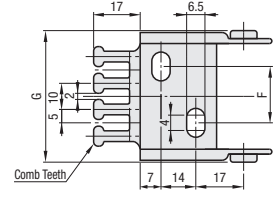
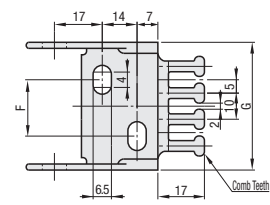


SE08F, SZ08F

* The only bracket type available for SE08F/SZ08F-16 and SE08F/SZ08F-20 is the type with two center holes.

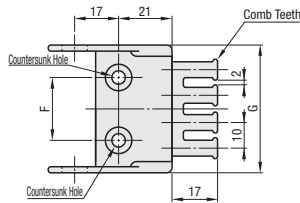


SE14F, SZ14F

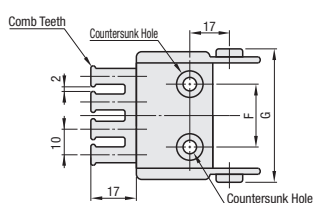


SE16F, SZ16F

<Moving Ends>

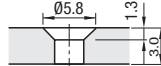


<Fixed Ends>

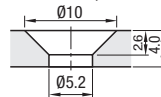


Detail of Countersunk Hole

• For SE08, SZ08



• For SE16, SZ16



Inserting Cables



Removing Cables



The cable can be removed by just pulling out.