

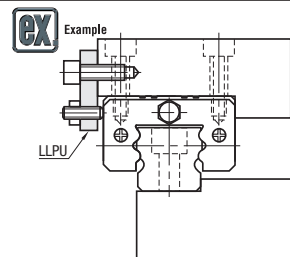
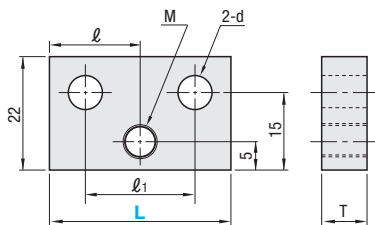
Linear Guide Lock Plates / Linear Guide Lock Units / Linear Guide Taper Locks

This plate secures the table and the datum plane of blocks to avoid misalignment from external force.

Linear Guide Lock Plates



RoHS 10



Type	Material	Surface Treatment
LLPU	S45C Equivalent	Electroless Nickel Plating

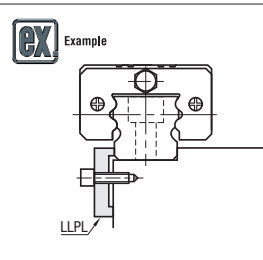
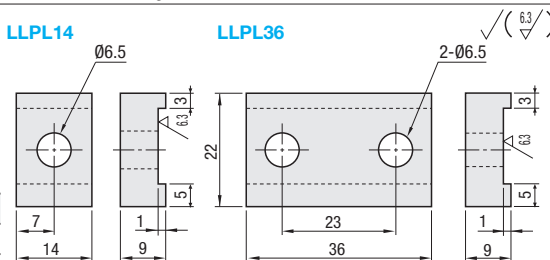
Part Number		T	ℓ	ℓ ₁	d	M	Unit Price	Volume Discount Rate
Type	L						1 ~ 9 pc(s).	10 ~ 50 pcs.
LLPU	23	6	11.5	11	5.5	5		To Be Quoted on WOS
	28							
	33							
	43							
		9	21.5	30				

This plate secures the rail and the pedestal to avoid misalignment from external force.

Linear Guide Lock Plates



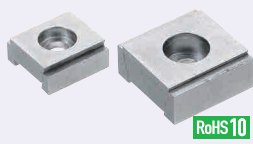
RoHS 10



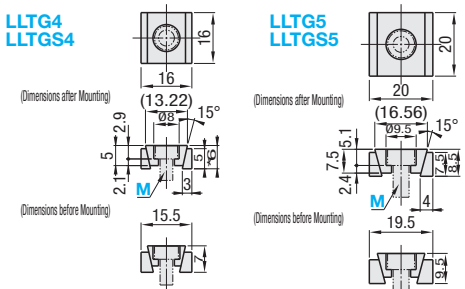
Type	Material	Surface Treatment
LLPL	S45C Equivalent	Electroless Nickel Plating

Part Number		Unit Price	Volume Discount Rate	
Type	Nominal			1 ~ 9 pc(s).
LLPL	14		To Be Quoted on WOS	
	36			

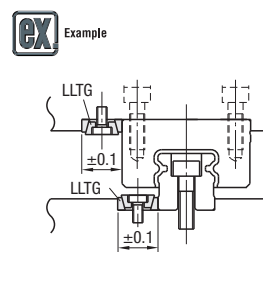
Linear Guide Lock Units



RoHS 10



*6 is the dimension when using low head cap screw.
The dimension is 7.1 when using a standard hex socket head cap screw.



Type	Material	Surface Treatment
LLTG	S45CD	Electroless Nickel Plating
LLTGS	SUS304	-

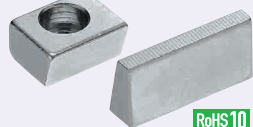
Part Number		(Recommendation) Tightening Torque (N·m)	Rail Clamp Force (kN)	LLTG		LLTGS	
Type	M			Unit Price	Volume Discount Rate	Unit Price	Volume Discount Rate
LLTG	4	2	3.2	1 ~ 9 pc(s).	10 ~ 100 pcs.	1 ~ 9 pc(s).	10 ~ 50 pcs.
	5						
LLTGS		8	9				

LLTG components are held together by elastic adhesive. Install as shipped.

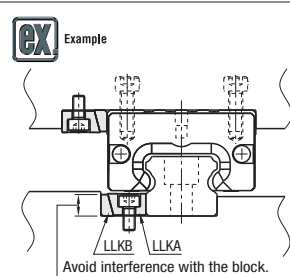
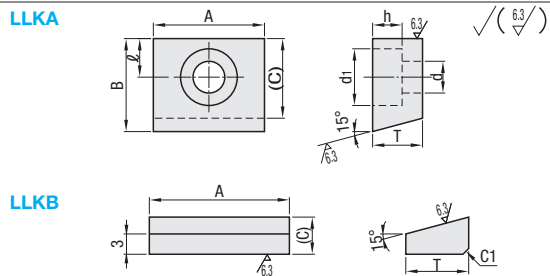
For orders larger than indicated quantity, please request a quotation.

By strongly pressing the rails or blocks on datum surfaces to avoid misalignment from external force.

Linear Guide Taper Locks



RoHS 10



Type	Material	Surface Treatment
LLKA	S45C	Electroless Nickel Plating
LLKB	Equivalent	Plating

Part Number		A	B	T	(C)	ℓ	d	d ₁	h	Unit Price	Volume Discount Rate
Type	No.									1 ~ 9 pc(s).	10 ~ 100 pcs.
LLKA	5	20	16	9	13.6	7	5.5	9.5	5.5		To Be Quoted on WOS
	6										
LLKB	5	20	-	9	5.41	-	-	-	-		
	6										



Part Number
LLPU23
LLTG4
LLKA6