

# Miniature Linear Guides - Dust Resistant

## Standard Blocks, Light Preload

**Features:** **Dust Resistant** Heavy Load Linear Guide usable where dust and machining chips exist.

**Industry Standard**



**RoHS10**

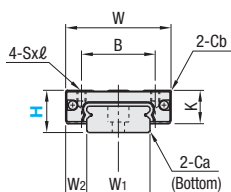
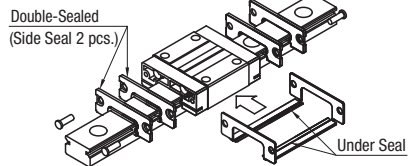
Blocks and rails are not sold as separate items. Light Preload Type has guaranteed radial clearances and accuracies as sets of blocks and rails.

- Intrusion of foreign substances into the blocks can be prevented by enhanced sealing effects with two-ply side seal and under seals.
- Can be used where dust and machining chips exist.
- Do not use in areas with high temperature dusts such as weld spatter.

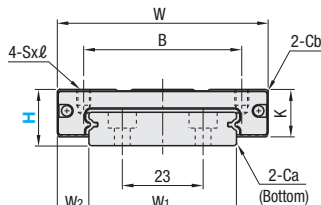
Material Hardness	Type		L Dimension	Number of Blocks
	Light Preload			
	Standard Rail	Wide Rail		
Stainless Steel 56HRC~	SSEBD	SSEBWD	Selectable	1
	SSE2BD	SSE2BWD		2
	SSEBDL	SSEBWDL	Configurable	1
	SSE2BDL	SSE2BWDL		2

Heat Resistant Temperature: -20 ~ 80°C

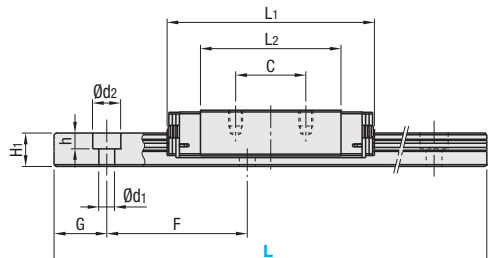
### Dust Resistant Type Structure



**Standard Rail H13/16/20**  
**Wide Rail H14**



**Wide Rail H16**



For L Configurable, G dimensions differ from those shown in the table below. For details, see P.531.

### Precautions for Use

- Blocks are equipped with retainers (wire) to prevent balls from falling off. For how to handle the blocks, see P.525.
- Radial clearances and accuracies are not guaranteed if the blocks and rails are interchanged from the original set combinations.
- Straight grooves are provided on datum planes. Be sure to match the datum lines when using.
- Rails cannot be connected end to end.
- The accuracy of Linear Guides is guaranteed after mounting the rail (after fastening screws on the rail and pushing it onto the datum plane).
- Minor bending of the rail will be adjusted after being mounted and will not affect the performance.

### Others

- Filled with Lithium soap based grease (Multemp Grease PS2 by Kyodo Yushi Co., Ltd.). For operating life calculation, see P.527.
- For operating life calculations, use our free calculation software from [http://download.misumi.jp/mol/fa\\_soft.html](http://download.misumi.jp/mol/fa_soft.html).

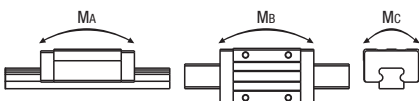
	Part Number		H	L	Block Dimension							Guide Rail Dimension							
	Type				W	L <sub>1</sub>	B	C	Sxℓ	L <sub>2</sub>	K	Cb	H <sub>1</sub>	W <sub>1</sub>	W <sub>2</sub>	Ca	Counterbored Hole d1xd2xh	F	G
Standard Rail	(1 block) SSEBD SSEBDL	(2 blocks) SSE2BD SSE2BDL	13	45~470 (120)	27	36.9	20	15	M3x3.5	19.9	11	0.5	7.5	12	7.5	0.5	3.5x6x4.5	25	10
			16	70~670 (150)	32	45.4	25	20	M3x4	27.4	13	0.5	9.5	15	8.5	0.5	3.5x6x4.5	40	15
			20	100~700 (160)	40	53	30	25	M4x6	34.6	16	0.5	11	20	10	0.5	6x9.5x5.5	60	20
Wide Rail	(1 block) SSEBWD SSEBWDL	(2 blocks) SSE2BWD SSE2BWDL	14	70~470 (150)	40	47.3	28	15	M3x3.5	30.1	12	0.5	8	24	8	0.5	4.5x8x4.5	40	15
			16	70~670 (190)	60	58	45	20	M4x4.5	40	14	0.5	9.5	42	9	0.5	4.5x8x4.5	40	15

Dimensions in ( ) are for 2-Block Type.

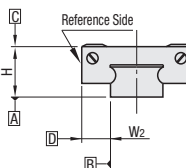
kgf=N×0.101972

Unit: μm

H	Basic Load Rating			Allowable Static Moment			Mass	
	C (Dynamic) kN	Co (Static) kN	MA N-m	MB N-m	MC N-m	Block kg	Guide Rail kg/m	
Standard Rail	13	2.2	3.3	8.8	9.5	16.1	0.045	0.61
	16	3.6	5.4	21.6	23.4	39.6	0.065	1.02
	20	5.2	8.5	48.4	48.4	86.4	0.13	1.65
Wide Rail	14	3.5	5.3	20.6	22.3	52.1	0.085	1.40
	16	5.8	8.5	40.2	43.6	148	0.16	2.95



### Preload and Accuracy Standards



Specifications	Light Preload, High Grade
Radial Clearance	-3~0
Height H Tolerance	±20
Pair Variation of Height H	15
Width W <sub>2</sub> Tolerance	±25
Pair Variation of Width W <sub>2</sub>	20
Running Parallelism of Plane C against Plane A	See P.525
Running Parallelism of Plane D against Plane A	See P.525

### Seal Resistance (N)

Rail Width	Height (H)	Standard	Dust Resistant
Standard	13	0.7	1.0
	16	0.8	1.1
	20	1.2	1.5
Wide	14	1.0	1.3
	16	1.2	1.5

Data above are reference values.