

Linear Guides for Medium Load - Stainless Steel

With Plastic Retainers, Interchangeable, Light Preload

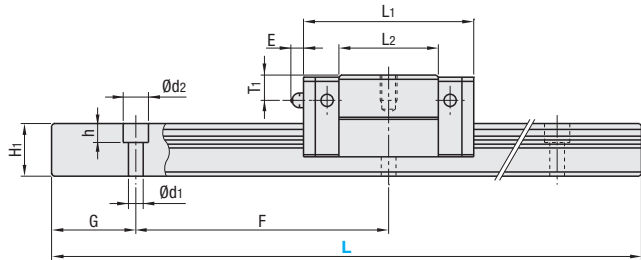
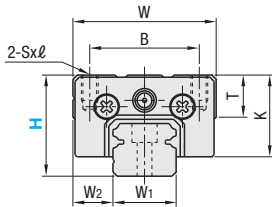
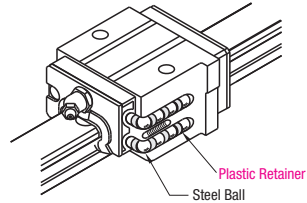
Features: Linear Guides with Plastic Retainers prevent contact between balls and result in low noise levels under high-speed operation.

Industry Standard



Material Hardness	Type		Block	Rail	L Dimension
	1 block	2 blocks			
Stainless Steel (SUS440C Equivalent) 57HRC~	SSVRZ	SSV2RZ	SSVRB	SSRZL	Selectable
	SSVLZ	SSV2RLZ		SSRZLF	Configurable

Heat Resistant Temperature: 0 ~ 50°C



For L Configurable, G dimensions differ from those shown in the table below. For details, see P. 531.

Precautions for Use

- Blocks are equipped with retainers to prevent balls from falling off. For how to handle the blocks, see P. 525.
- For interchangeable, Light Preload Type, rails and blocks can be interchanged.
- Straight grooves are provided on datum planes. Be sure to match the datum lines when using.
- Rails cannot be connected end to end.
- The accuracy of Linear Guides is guaranteed after mounting the rail (after fastening screws on the rail and pushing it onto the datum plane).
- Minor bending of the rail will be adjusted after being mounted and will not affect the performance.

Others

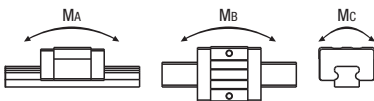
- Filled with Lithium soap based grease (Alvania Grease S2 by Showa Shell Sekiyu K.K.).
- Grease Fittings: Straight Type for H24 and Angled Type for H28 and H33.
- Grease Fitting is screw-in type, and thus, can be repositioned.
- For Operating Life Calculation, see P. 527
- For operating life calculations, use our free calculation software from http://download.misumi.jp/mol/fa_soft.html.

Part Number		H	L	Block Dimension							Guide Rail Dimension								
Type				W	L ₁	B	SxL	L ₂	K	T	Grease Fitting			H ₁	W ₁	W ₂	Counterbored Hole d ₁ ×d ₂ ×h	F	G
1 block	2 blocks									Mounting Hole	E	T ₁							
SSVRZ	SSV2RZ	24	100-1480 (160)	34	40.4	26	M4x6	23.6	19.4	10	Ø3	3	6	12.5	15	9.5	3.5x6x4.5	60	20
SSVLZ	SSV2RLZ																		
(Block)	(Rail)	28	160-1480 (220)	42	47.2	32	M5x7	30	22	12	M6xP0.75	11	5.5	15.5	20	11	6x9.5x8.5	60	20
SSVRB	SSRZL	33	160-1480 (220)	48	59.6	35	M6x9	38	26	12	M6xP0.75	11	7	18	23	12.5	7x11x9	60	20
(Block)	(Rail)																		

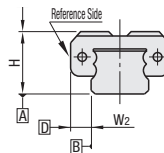
L Dimension: Dimensions in () are for 2-Block Type.

kgf=Nx0.101972

H	Basic Load Rating		Allowable Static Moment			Mass	
	C (Dynamic) kN	Co (Static) kN	MA N·m	Mb N·m	Mc N·m	Block kg	Guide Rail kg/m
24	4.9	7.8	21	18	39	0.14	1.4
28	7.25	11.8	40	34	80	0.19	2.3
33	12.7	20.8	96	81	164	0.34	3.1



Preload and Accuracy Standards



Interchangeable, Light Preload Type

Radial Clearance (µm)

H24, 28	-4~0
H33	-5~0

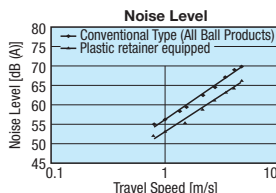
Dimensional Accuracy (µm)

Dimensional Accuracy (µm)	Interchangeable
Height H Tolerance	±20
Pair Variation of Height H	15
Width W ₂ Tolerance	±30
Pair Variation of Width W ₂	25

Running Parallelism of Plane C against Plane A
Running Parallelism of Plane C against Plane B

See P. 525

Features of Plastic Retainers: Low noise levels and improved sound quality



- Lack of mutual contact between balls results in low noise levels and improved sound quality.
- Since there is no mutual contact abrasion between the balls, particle generation is less than those of conventional products.