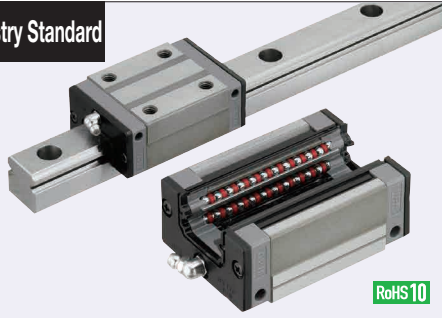


Linear Guides for Super Heavy Load

With Plastic Retainers, Interchangeable, Light Preload

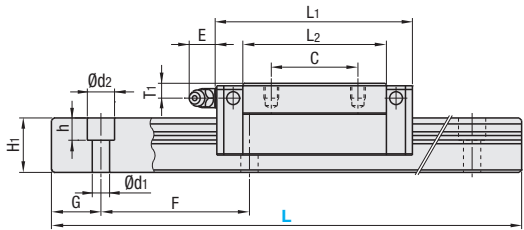
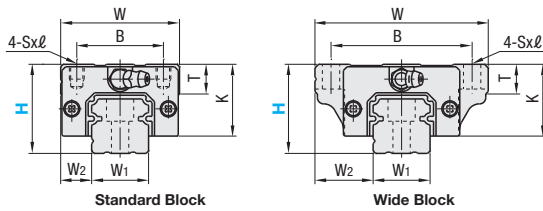
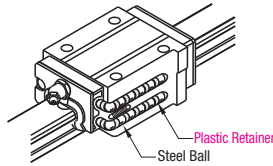
Similar Products Comparison Points | Select this product for high precision positioning, heavy load, and high frequency drive application.

Industry Standard



	Type		Block	Rail	L Dimension	Material Hardness
	1 block	2 blocks				
Standard	SHRZ	SH2RZ	SHRB	SHZL	Selectable	Carbon Steel 58HRC~
	SHRLZ	SH2RLZ		SHZLF	Configurable	
Wide Block Through Hole	SHWZ	SH2WZ	SHWB	SHZL	Selectable	
	SHWLZ	SH2WLZ		SHZLF	Configurable	
Wide Block Tapped Hole	SHWTZ	SH2WTZ	SHWPB	SHZL	Selectable	
	SHWTLZ	SH2WTLZ		SHZLF	Configurable	

Heat Resistant Temperature: 0 ~ 50°C



For L Configurable, G dimensions differ from those shown in the table below. For details, see P531.

Precautions for Use

- Blocks are equipped with retainers to prevent balls from falling off. For how to handle the blocks, see P525.
- For interchangeable, Light Preload Type, rails and blocks can be interchanged.
- Straight grooves are provided on datum planes. Be sure to match the datum lines when using.
- Rails cannot be connected end to end.
- The accuracy of Linear Guides is guaranteed after mounting the rail (after fastening screws on the rail and pushing it onto the datum plane).
- Minor bending of the rail will be adjusted after being mounted and will not affect the performance.

Others

- Filled with Lithium soap based grease (Alvania Grease S2 by Showa Shell Sekiyu K.K.).
- Angled Grease Fitting Type
- Grease Fitting is screw-in type, and thus, can be repositioned.
- For Operating Life Calculation, see P527
- For operating life calculations, use our free calculation software from http://download.misumi.jp/mol/fa_soft.html.

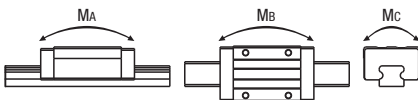
	Part Number		H	L	Block Dimension										Guide Rail Dimension						
	Type				W	L ₁	B	C	Sxℓ	L ₂	K	T	Grease Fitting			H ₁	W ₁	W ₂	Counterbored Hole d1xdzxh	F	G
	1 block	2 blocks											Mounting Hole	E	T ₁						
Standard Block	SHRZ	SH2RZ	30	220~1960	44	69.8	32	36	M5x6	50	25	12	M6xP0.75	11	5	18	20	12	6x9.5x8.5	60	20
	SHRLZ	SH2RLZ	36	220~1960	48	79	35	35	M6x6	58	29	12	M6xP0.75	11	6	22	23	12.5	7x11x9	60	20
	(Block) SHRB	(Rail) SHZL SHZLF	42	280~1960	60	85.6	40	40	M8x8	59	33	14	M6xP0.75	11	7	26	28	16	9x14x12	80	20
Wide Block	SHWZ	SH2WZ	30	220~1960	63	69.8	53	40	6 (M6)	50	25	10	M6xP0.75	11	5	18	20	21.5	6x9.5x8.5	60	20
	SHWLZ	SH2WLZ	36	220~1960	70	79	57	45	7 (M8)	58	29	11	M6xP0.75	11	6	22	23	23.5	7x11x9	60	20
	(Block) SHWB SHWPB	(Rail) SHZL SHZLF	42	280~1960	90	98.6	72	52	9 (M10)	72	33	11	M6xP0.75	11	7	26	28	31	9x14x12	80	20

Sxℓ Dimensions: Dimensions in () are for Wide Block Tapped Hole.

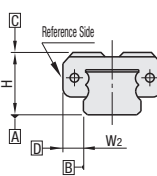
kgf=Nx0.101972

H	Basic Load Rating			Allowable Static Moment			Mass		
	C (Dynamic) kN	Co (Static) kN	MA N·m	Mb N·m	Mc N·m	Block kg		Guide Rail kg/m	
						Standard	Wide		
30	16.3	29.6	167	141	199	0.33	0.45	2.6	
36	22.4	37.5	246	207	295	0.46	0.63	3.6	
42	31.0 (35.5)	51.5 (63.0)	356 (540)	305 (450)	490 (600)	0.69 (1.2)	1.20	5.2	

Values in () are for Wide Block (Through Holes and Tapped Holes) Type.



Preload and Accuracy Standards



Interchangeable, Light Preload Type

Radial Clearance (µm)	
H30, 36	-5~0
H42	-7~0

Dimensional Accuracy (µm)	
Height H Tolerance	±20
Pair Variation of Height H	15
Width W ₂ Tolerance	±30
Pair Variation of Width W ₂	25
Running Parallelism of Plane C against Plane A	See
Running Parallelism of Plane D against Plane B	P525