

Miniature Linear Guides

Wide Long Blocks, Light Preload

Features: **Wide Block** Type of MISUMI original specifications. Larger screw size has enhanced fastening strength compared to standard products.

MISUMI Original

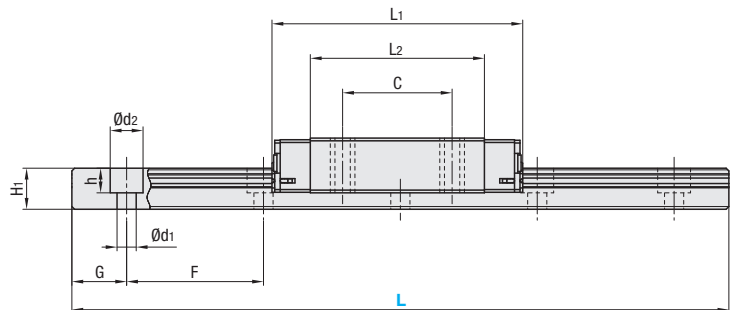
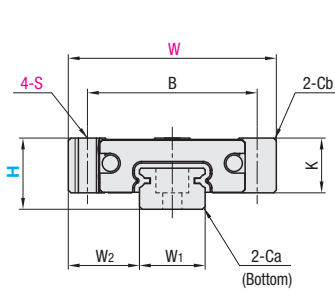


RoHS10

Blocks and rails are not sold as separate items. This Type has guaranteed radial clearances and accuracies as sets of blocks and rails.

Material Hardness	Type	L Dimension	Number of Blocks
	Light Preload High Grade Set		
Stainless Steel 56HRC~	SSELBM	Selectable	1
	SSEL2BM		2
	SSELBML	Configurable	1
	SSEL2BML		2

Heat Resistant Temperature: -20 ~ 80°C



For L Configurable, G dimensions differ from those shown in the table below. For details, see P.531.

Precautions for Use

- Blocks are equipped with retainers (wire) to prevent balls from falling off. For how to handle the blocks, see P.525.
- Radial clearances and accuracies are not guaranteed if the blocks and rails are interchanged from the original set combinations.
- Straight grooves are provided on datum planes. Be sure to match the datum lines when using.
- Rails cannot be connected end to end.
- The accuracy of Linear Guides is guaranteed after mounting the rail (after fastening screws on the rail and pushing it onto the datum plane).
- Minor bending of the rail will be adjusted after being mounted and will not affect the performance.

Accessory

- H8 comes with cap screws (M2x6).

Others

- Filled with Lithium soap based grease (Multemp Grease PS2 by Kyodo Yushi Co., Ltd.).
- For operating life calculation, see P.527.
- For operating life calculations, use our free calculation software from http://download.misumi.jp/mol/fa_soft.html.

Part Number Type	H	L	Block Dimension							Guide Rail Dimension							
			W	L1	B	C	S	L2	K	Cb	W1	W2	H1	Ca	Counterbored Hole d1xd2xh	F	G
SSELBM SSEL2BM SSELBML SSEL2BML	8	40~130 (100)	24	32	19	13	M3	22	6.5	0.3	7	8.5	4.7	0.3	2.4x4.2x2.3	15	5
	10	55~275 (115)	31	40	24	16	M4	29	7.8	0.3	9	11	5.5	0.3	3.5x6x3.5	20	7.5
	13	70~470 (120)	38	45.8	31	20	M4	31.8	10	0.5	12	13	7.5	0.5	3.5x6x4.5	25	10
	16	110~670 (150)	44	58.3	36	25	M4	43.3	12	0.5	15	14.5	9.5	0.5	3.5x6x4.5	40	15
	20	160~700 (220)	54	67.7	46	30	M5	52.3	15	0.5	20	17	11	0.5	6x9.5x5.5	60	20

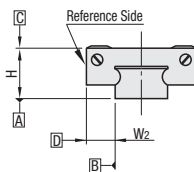
Dimensions in () are for 2-Block Type.

kgf=Nx0.101972

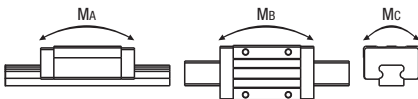
Unit: μm

H	Basic Load Rating			Allowable Static Moment			Mass	
	C (Dynamic) kN	Co (Static) kN	MA N·m	Mb N·m	Mc N·m	Block kg	Guide Rail kg/m	
8	1.6	2.4	7.5	7.5	9.0	0.016	0.19	
10	2.2	3.7	12.3	12.3	13.0	0.03	0.31	
13	3.5	5.3	24.5	26.4	32.3	0.06	0.61	
16	5.8	8.7	57.8	62.6	67.6	0.10	1.02	
20	7.2	13.5	80.7	80.7	138.2	0.18	1.65	

Preload and Accuracy Standards



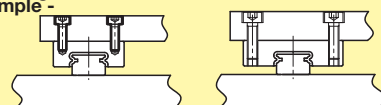
Specifications	Light Preload, High Grade
Radial Clearance	-3~0
Height H Tolerance	±20
Pair Variation of Height H	15
Width W2 Tolerance	±25
Pair Variation of Width W2	20
Running Parallelism of Plane C against Plane A	See P.525
Running Parallelism of Plane D against Plane A	



- Mounting Example -

Conventional Type

Wide Block Type



*One size larger screws. Enhanced assembly and fastening strength.