



Miniature Linear Guides

Short Blocks with Dowel Holes, Light Preload

Features: MISUMI original specifications with dowel holes. Requires less time for assembly and has better repeatability.

MISUMI Original

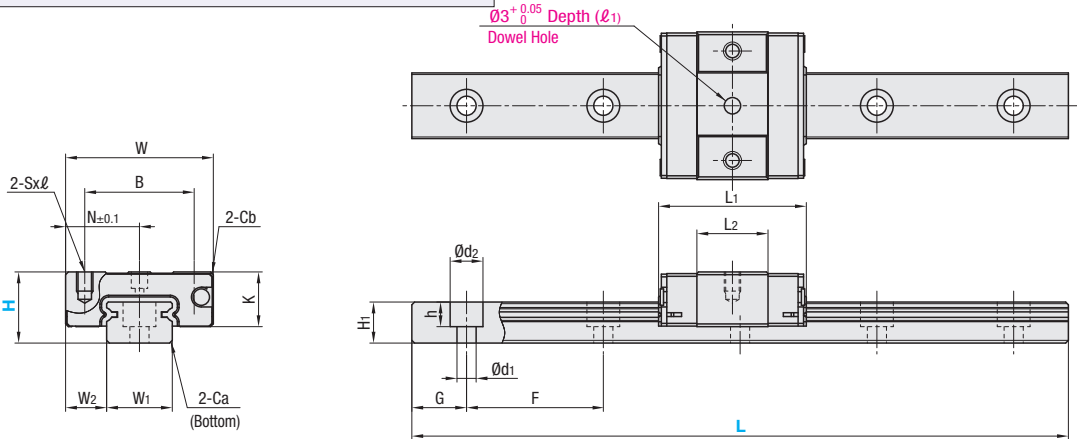


RoHS 10

Blocks and rails are not sold as separate items. This Type has guaranteed radial clearances and accuracies as sets of blocks and rails.

Material Hardness	Type High Grade	MX (Lubrication Unit)	L Dimension	Number of Blocks
Stainless Steel 56HRC~	SSEBSN	Blank: None -MX: Provided	Selectable	1
	SSE2BSN			2
	SSEBSNL		Configurable	1
	SSE2BSNL			2

Heat Resistant Temperature: -20 ~ 80°C



For L Configurable, G dimensions differ from those shown in the table below. For details, see P. 531.

Precautions for Use

- Blocks are equipped with retainers (wire) to prevent balls from falling off. For how to handle the blocks, see P. 525.
- Radial clearances and accuracies are not guaranteed if the blocks and rails are interchanged from the original set combinations.
- Straight grooves are provided on datum planes. Be sure to match the datum lines when using.
- Rails cannot be connected end to end.
- The accuracy of Linear Guides is guaranteed after mounting the rail (after fastening screws on the rail and pushing it onto the datum plane).
- Minor bending of the rail will be adjusted after being mounted and will not affect the performance.

Accessory

- H8 comes with cap screws (M2x6).

Others

- Filled with Lithium soap based grease (Multemp Grease PS2 by Kyodo Yushi Co., Ltd.).
- For operating life calculation, see P. 527.
- For operating life calculations, use our free calculation software from http://download.misumi.jp/mol/fa_soft.html.
- The MX type is greased with a lithium complex grease (TOUHLIX GREASE MP2, made by JXTG Nippon Oil & Energy Corporation).

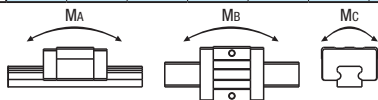
Part Number Type	MX	H	L	Block Dimension							Dowel Hole Dimensions		Guide Rail Dimension						
				W	L1	B	Sxℓ	L2	K	Cb	N	(ℓ1)	W1	W2	H1	Ca	Counterbored Hole d1xd2xh	F	G
SSEBSN SSE2BSN SSEBSNL SSE2BSNL	Blank: None -MX: Provided	8	40~130 (55)	17	19.6	12	M2x2.5	9.6	6.5	0.3	8.5	2	7	5	4.7	0.3	2.4x4.2x2.3	15	5
		10	35~275 (75)	20	22.9	15	M3x3	11.9	7.8	0.3	10	2.5	9	5.5	5.5	0.3	3.5x6x3.5	20	7.5
		13	45~470 (95)	27	27	20	M3x3.5	13	10	0.5	13.5	3	12	7.5	7.5	0.5	3.5x6x4.5	25	10
		16	70~670 (110)	32	32.7	25	M3x4	17.7	12	0.5	16	4	15	8.5	9.5	0.5	3.5x6x4.5	40	15

Dimensions in () are for 2-Block Type.

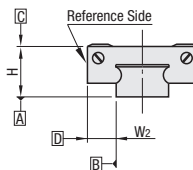
H	Basic Load Rating			Allowable Static Moment			Mass	
	C (Dynamic) kN	Co (Static) kN	Co (Static) kN	MA N·m	Mb N·m	Mc N·m	Block kg	Guide Rail kg/m
8	0.79	1.27	1.9	1.9	1.6	4.6	0.008	0.19
10	1.16	1.68	3.1	2.6	2.6	7.9	0.015	0.31
13	1.63	2.38	5.2	4.4	4.4	14.8	0.025	0.61
16	3.08	4.23	12.3	10.3	10.3	32.6	0.05	1.02

kgf=Nx0.101972

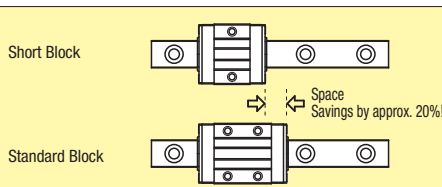
Unit: µm



Preload and Accuracy Standards



Specifications	Light Preload, High Grade
Radial Clearance	-3~0
Height H Tolerance	±20
Pair Variation of Height H	15
Width W2 Tolerance	±25
Pair Variation of Width W2	20
Running Parallelism of Plane C against Plane A	See P. 525
Running Parallelism of Plane D against Plane A	See P. 525



- Installation Examples -

