



Miniature Linear Guides

Long Blocks, Light Preload

Similar Products Comparison Points | The industry standard Long Block Type. Select from Light Preload Types with superior precision and rigidity.

Industry Standard



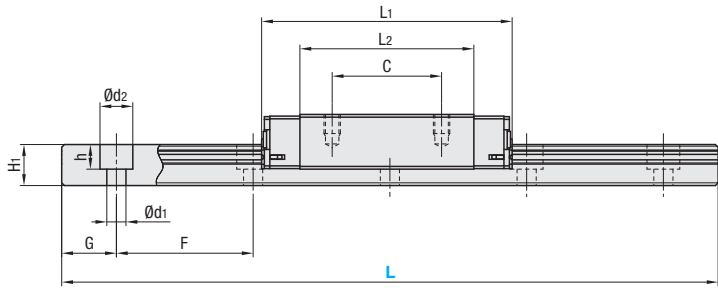
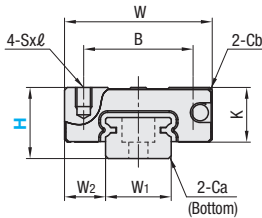
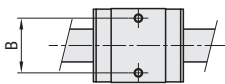
RoHS10

- This Type has the same fitting dimensions as the other company products, and thus, can be substituted for them.
- Blocks and rails are not sold as separate items. This Type has guaranteed radial clearances and accuracies as sets of blocks and rails.

Material Hardness	Type			MX (Lubrication Unit)	L Dimension	Number of Blocks
	Light Preload		Slight Clearance			
	High Grade	Precision Grade	Standard Grade			
Stainless Steel 56HRC~	SSELB	SSELBV	SSELBZ	Blank: None -MX: Provided	Selectable	1
	SSEL2B	SSEL2BV	SSEL2BZ			2
	SSELBL	SSELBLV	SSELBLZ		Configurable	1
	SSEL2BL	SSEL2BLV	SSEL2BLZ			2

Heat Resistant Temperature: -20 ~ 80°C
 *H6 is for High Grade only.

H6 Type



*For L Configurable, G dimensions differ from those shown in the table below. For details, see P. 531.

Precautions for Use

- Blocks are equipped with retainers (wire) to prevent balls from falling off. For how to handle the blocks, see P525.
- Radial clearances and accuracies are not guaranteed if the blocks and rails are interchanged from the original set combinations.
- Straight grooves are provided on datum planes. Be sure to match the datum lines when using.
- Rails cannot be connected end to end.
- The accuracy of Linear Guides is guaranteed after mounting the rail (after fastening screws on the rail and pushing it onto the datum plane). Minor bending of the rail will be adjusted after being mounted and will not affect the performance.

Accessory

- H6 comes with Number 0, Class 1 Phillips button head screws (M2x6).
- H8 comes with cap screws (M2x6).

Others

- Filled with Lithium soap based grease (Multemp Grease PS2 by Kyodo Yushi Co., Ltd.).
- For operating life calculation, see P527.
- For operating life calculations, use our free calculation software from http://download.misumi.jp/mol/fa_soft.html.
- The MX type is greased with a lithium complex grease (TOUGH LIX GREASE MP2, made by JXTG Nippon Oil & Energy Corporation).

Part Number	Type	MX	H	L	Block Dimension										Guide Rail Dimension					
					W	L1	B	C	Sxℓ	L2	K	Cb	W1	W2	H1	Ca	Counterbored Hole d1xd2xh	F	G	
SSELB SSEL2B SSELBL SSEL2BL	SSELBV SSEL2BV SSELBLV SSEL2BLV	SSELBZ SSEL2BZ SSELBLZ SSEL2BLZ	Blank: None -MX: Provided	6	40-100 (70)	12	21	8	-	M2x1.5	13.3	4.5	0.3	5	3.5	4	0.3	2.4x3.5x1	15	5
				8	40-130 (85)	17	32	12	13	M2x2.5	22	6.5	0.3	7	5	4.7	0.3	2.4x4.2x2.3	15	5
				10	55-275 (95)	20	40	15	16	M3x3	29	7.8	0.3	9	5.5	5.5	0.3	3.5x6x3.5	20	7.5
				13	70-470 (120)	27	45.8	20	20	M3x3.5	31.8	10	0.5	12	7.5	7.5	0.5	3.5x6x4.5	25	10
				16	110-670 (150)	32	58.3	25	25	M3x4	43.3	12	0.5	15	8.5	9.5	0.5	3.5x6x4.5	40	15
				20	160-700 (220)	40	67.7	30	30	M4x6	52.3	15	0.5	20	10	11	0.5	6x9.5x5.5	60	20

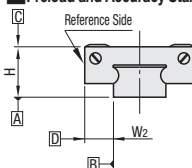
*Dimensions in () are for 2-Block Type.

kgf=Nx0.101972

H	Basic Load Rating		Allowable Static Moment			Mass	
	C (Dynamic) kN	Co (Static) kN	MA N-m	Mb N-m	Mc N-m	Block kg	Guide Rail kg/m
6	0.6	1.0	1.8	1.8	2.3	0.005	0.13
8	1.6	2.4	7.5	7.5	9.0	0.016	0.19
10	2.2	3.7	12.3	12.3	13.0	0.03	0.31
13	3.5	5.3	24.5	26.4	32.3	0.06	0.61
16	5.8	8.7	57.8	62.6	67.6	0.10	1.02
20	7.2	13.5	80.7	80.7	138.2	0.18	1.65



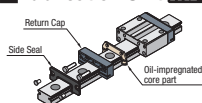
Preload and Accuracy Standards



Specifications	Light Preload, High Grade	Light Preload, Precision Grade	Slight Clearance Standard Grade
Radial Clearance	-3-0		0~+15
Height H Tolerance	±20	±10	±20
Pair Variation of Height H	15	7	40
Width W2 Tolerance	±25	±15	±25
Pair Variation of Width W2	20	10	40
Running Parallelism of Plane C against Plane A	See P525		
Running Parallelism of Plane D against Plane A	See P525		

*Slight Clearance Type has clearance (Gap) between rails and blocks. If precision / rigidity is required, select Light Preload Type.

Lubrication Unit MX



The same block size as existing products!

The oil-impregnated porous core part has been built into the product.

- Advantages of the Lubrication Unit MX:
 - Provides long-term maintenance-free operation.
 - Reduces maintenance costs.