

Tall Blocks Housing Units

Single / Compact

= For customers using industry standard products =

The part enclosed in the red frame is as per industry standard specifications (Outer cylinder SUJ2 equivalent, Retainer resin). Consider these specifications while selecting the product.

Features: Compact: Max. 6mm lower in height (H dimension) and Max. 3mm smaller in width (W dimension) than Standard. (Standard and Compact Comparison **P318**)

Industry Standard

Standard

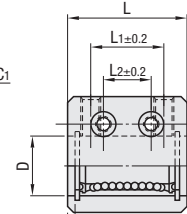
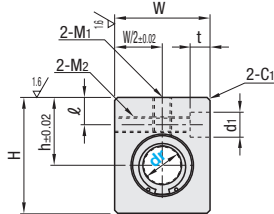


Compact



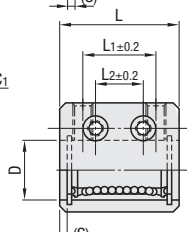
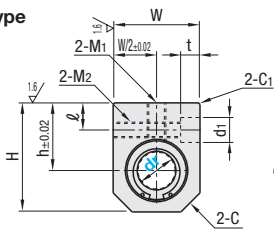
Type		Linear Bushing Used (P315) (P318)		Housing		Ambient Operating Temp.
Standard	Compact	Standard	Compact	Material	Surface Treatment	
LHSS	LHSSK	LMU	LMK	Aluminum Alloy	Clear Anodize	-20~ 80°C
LHSSF	-	LMUF	-			-20~ 110°C
SLHSS	-	SLMU	-			-20~ 80°C
SLHSSF	-	SLMUS	-			-20~ 110°C

Standard



6.3 / (1.5 /)
(Housing)

Compact Type



dr	Tolerance	D		(S)	L	L1	L2	h		W		H		ℓ		M1 (Effective Length)		M2 (Effective Length)		C	C1	d1xt
		Standard	Compact					Standard	Compact	Standard	Compact	Standard	Compact	Standard	Compact	Standard	Compact	Standard	Compact			
4	0 -0.008	8	-	1.1	15	-	10	10	-	12	-	16	-	3	-	M3 (6)	-	M3 (10.5)	-	-	0.5	4.2x1.5 (For M2 Screws)
5		10	-	4.0	25	16	7	13	-	15	-	20	-	5	-	M4 (8)	-	M4 (10)	-	-	1	6x5 (For M3 Screws)
(6)		12	10	3.0	27	18	9	14	13	16	14	22	20		4	M4 (8)	M4 (11)	M4 (9)	M4 (12)	4	1 or less	
(8)		15	13		32	20	10	16	15	20	17	26	24	5	M5 (8.5)	M5 (8.5)	M4 (15)	M4 (12)	5	1 or less		
(10)		19	17	4.0	39	27	15	19	18	26	23	32	30	6	6	M6 (9.5)	M6 (9.5)	M5 (20)	M5 (17)	6	1 or less	8x6 (For M4 Screws)
(12)	0 -0.009	21	19		40	20	19	28	25	34	32	6	6		M5 (22)	M5 (19)	6	1 or less				
13		23	-	42	28	16	25	-	30	-	43	-	7	-	M6 (23)	-	M6 (23)	-	-	1	9x7 (For M5 Screws)	
(16)		28	26	3.8	47	32	18	27	26	36	33	49		43	7	M6 (13)	M6 (13)	M6 (29)	M6 (26)	8		1 or less
20		32	-	52	36	31	-	42	-	54	-	-	-	8	-	M8 (15)	-	M8 (34)	-	-	1	11x8 (For M6 Screws)
25	0 -0.010	40	-	69	42	37	-	52	-	65	-	-	-		9	-	M10 (17)	-	M10 (42)	-	-	
30		45	-	3.2	74	44	22	40	-	58	-	71	-	9	-	M10 (17.5)	-	M10 (48)	-	-	1	14x10 (For M8 Screws)

For Precautions for Use, see **P303**. Only dr dimensions in () are available for Compact. Make certain that the screws do not interfere with the bushing as M1 are through holes. Standard dr4 has one M1 mounting hole only. The datum surface is located on the other side of product ID label.

Part Number	dr	Unit Price				
		LHSS	LHSSF	SLHSS	SLHSSF	LHSSK
(Standard)	4		-	-	-	-
	5		-	-	-	-
	6		-	-	-	-
	8		-	-	-	-
	10		-	-	-	-
	12		-	-	-	-
	13		-	-	-	-
	16		-	-	-	-
(Compact)	20		-	-	-	-
	25		-	-	-	-
	30		-	-	-	-

dr	Basic Load Rating				Mass (g)	
	C (Dynamic) N		Co (Static) N		Standard	Compact
4	88	-	127	-	8	-
5	167	-	206	-	18	-
6	206	131	265	155	22	17
8	265	235	380	277	40	32
10	372	368	549	433	80	67
12	412	381	598	449	90	80
13	510	-	608	-	132	-
16	775	608	1180	716	204	155
20	882	-	1370	-	272	-
25	980	-	1570	-	574	-
30	1570	-	2740	-	710	-

kgf=Nx0.101972



Ordering Example
Part Number
LHSS12
LHSS12L (L Type Greased)
LHSS12G (G Type Greased)
LHSS12H (H Type Greased)

Alternative grease types available.
For Days to Ship, Price and Performance, see **P304**