



W
Rubber wheel with steel plate wheel assembly (including B)



WP
Steel plate wheel
Rubber wheel



NR
Rubber wheel with nylon wheel assembly (including B)



N
Nylon wheel



NB
Nylon wheel (including B)



UW
Urethane wheel with steel plate wheel assembly (including B)



GU
Urethane wheel with nylon wheel assembly (including B)

Wheels used in SA SERIES (Wheel diameter: ϕ 100)

Product number	Wheels					
		Wheel diameter (mm)	Boss width (mm)	Wheel width (mm)	Hole diameter (mm)	Allowance load daN(kgf)
W- 100	Rubber wheel with steel plate wheel assembly (including B)	100	42	32	12	120(122.4)
WP- 100	Rubber wheel with steel plate wheel assembly	100	42	32	12.2	120(122.4)
NR- 100	Rubber wheel with nylon wheel assembly (including B)	100	42	32	12	100(102.0)
N- 100	Nylon wheel	100	42	32	12	120(122.4)
NB- 100 (equipped with cover)	Nylon wheel (including B)	100	43	32	12	120(122.4)
UW- 100	Urethane wheel with steel plate wheel assembly (including B)	100	42	32	12	180(183.6)
GU- 100	Urethane wheel with nylon wheel assembly (including B)	100	42	32	12	100(102.0)

*(Equipped with cover) = Bearing cover type

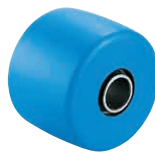
* Allowable load indicates allowable load only for wheels.



PB
Phenol wheel (including B)



GFB
Reinforced nylon wheel (including B)



MC
MC nylon wheel (including B)



MCE
MC nylon wheel (including B) (conductive)

Wheels used in H SERIES UHG TYPE

Product number	Wheels	Wheel diameter	Boss width	Wheel width	Hole diameter	Allowance load	
		(mm)	(mm)	(mm)	(mm)	daN(kgf)	
UH- 50	PB	Phenol wheel (including B)	50	42	38	10.2	400(408.0)
			65	51.5	48	16.1	500(510.0)
			75	51.5	48	16.1	600(612.0)
UH- 50	GFB	Reinforced nylon wheel (including B)	50	43	38	10.2	300(306.0)
			65	51.5	48	16	400(408.0)
			75	51.5	48	16	500(510.0)
UH- 65	MC	MC nylon wheel (including B)	50	42	38	10.2	400(408.0)
			65	51.5	48	16.1	600(612.0)
			75	51.5	48	16.1	700(714.0)
			80	51.5	48	16.1	800(816.0)
UH- 100	MCE	MC nylon wheel (including B) (conductive)	50	42	38	10.2	400(408.0)
			65	51.5	48	16.1	600(612.0)
			75	51.5	48	16.1	700(714.0)

* Allowable load indicates allowable load only for wheels.



GNB
Reinforced nylon wheel

Wheels used in H SERIES HGL TYPE

Product number	Wheels	Wheel diameter	Boss width	Wheel width	Hole diameter	Allowance load	
		(mm)	(mm)	(mm)	(mm)	daN(kgf)	
HL- 32	GNB	Reinforced nylon wheel	32	31	21	8.2	120(122.4)

* Allowable load indicates allowable load only for wheels.

*(including B) indicates wheels equipped with bearing.

J

PM

J2

RJ2

SJ

S

E

G

L

SA

H

CAL

-H

M

PL

Silence

SUS

-J2

SUS

-SJ

SUS

-S

SUS

-E

SUS

-H

P

SKY

Equipped with adjuster foot

Special

Easy lock

Wheels