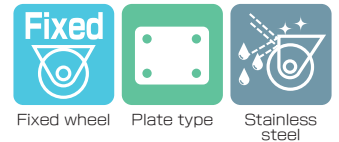
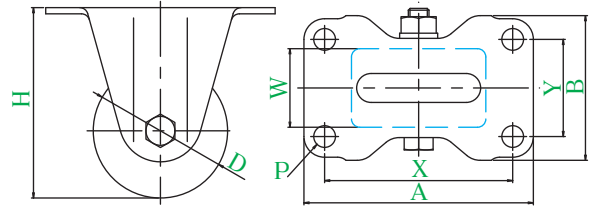


SUS-HR TYPE



SUS-HR-65PB



● Description of product number

SUS - HR - 65 PB

Bracket type Wheel diameter Wheel type

Bracket = Stainless steel

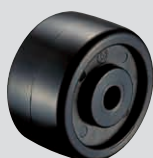
Product number	Wheels								
		Wheel diameter D(mm)	Wheel width W(mm)	Mounting height H(mm)	Mounting base A × B(mm)	Mounting dimensions X × Y(mm)	Hole diameter P(mm)	Allowance load daN(kgf)	Wheel weight (g)
SUS-HR-50	GNB Reinforced nylon wheel	50	28	68	80 × 50	66 × 36	6.5	120(122.4)	175
	MC MC nylon wheel		25					120(122.4)	
	MCE MC nylon wheel (conductive)							120(122.4)	
SUS-HR-65	PB Phenol wheel (including B)	65	38	92	111 × 70	91 × 47	10.5	230(234.6)	560
	GNB Reinforced nylon wheel (including B)							230(234.6)	
	MC MC nylon wheel (including B)							230(234.6)	
	MCEB MC nylon wheel (including B) (conductive)							230(234.6)	
SUS-HR-75	PB Phenol wheel (including B)	75	38	106	123 × 72	103 × 52	10.5	250(255.0)	675
	GNB Reinforced nylon wheel (including B)							250(255.0)	
	MC MC nylon wheel (including B)							250(255.0)	
	MCEB MC nylon wheel (including B) (conductive)							250(255.0)	

Wheel in use

Refer to P164 for detailed specifications.



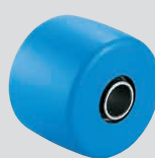
PB Phenol wheel (including B)



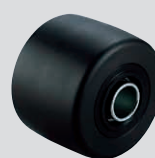
GNB Reinforced nylon wheel



GNB Reinforced nylon wheel (including B)



MC MC nylon wheel (including B)



MCE MCEB MC nylon wheel (including B) (conductive)

- J
- PM
- J2
- RJ2
- SJ
- S
- E
- G
- L
- SA
- H
- CAL -H
- M
- PL
- Silence
- SUS -J2
- SUS -SJ
- SUS -S
- SUS -E
- SUS -H**
- P
- SKY
- Equipped with adjuster foot
- Special
- Easy lock
- Wheels