

SUS-E TYPE



There are some non-conforming products.



Swivel



Plate type



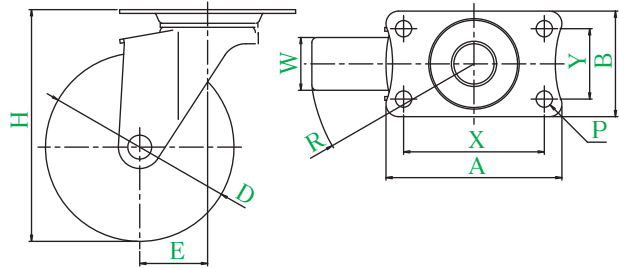
Double bearing



Stainless steel



SUS-E-100N



● Description of product number

SUS - E - 100 N

Bracket type

Wheel diameter

Wheel type

Bracket = Stainless steel

Product number	Wheels										
		Wheel diameter D(mm)	Wheel width W(mm)	Mounting height H(mm)	Mounting base A × B(mm)	Mounting dimensions X × Y(mm)	Hole diameter P(mm)	Eccentricity E(mm)	Turning radius R(mm)	Allowance load daN(kgf)	Wheel weight (g)
SUS-E-50	R Rubber wheel	50	20	65	70 × 42	56 × 28	6.5	22	47	30(30.6)	155
	N Nylon wheel		21							40(40.8)	130
	UR Urethane wheel with nylon wheel assembly		20							38(38.8)	145
	EL Elastomer wheel		25(25.5)							135	
SUS-E-65	RH Rubber wheel	65	21	82	70 × 42	56 × 28	6.5	23	56	30(30.6)	205
	N Nylon wheel									40(40.8)	160
	UR Urethane wheel with nylon wheel assembly									40(40.8)	170
SUS-E-75	RH Rubber wheel	75	21	92	70 × 42	56 × 28	6.5	27	65	40(40.8)	245
	N Nylon wheel									50(51.0)	170
	UR Urethane wheel with nylon wheel assembly									45(45.9)	190
	EL Elastomer wheel									30(30.6)	195
SUS-E-100	RH Rubber wheel	100	25	122	100 × 58	82 × 40	8.8	31	82	50(51.0)	520
	NR Rubber wheel with nylon wheel assembly		27							60(61.2)	440
	N Nylon wheel		25							60(61.2)	370
	UR Urethane wheel with nylon wheel assembly		28							60(61.2)	405
	EL Elastomer wheel		27							50(51.0)	395

- Conductive rubber wheel can be manufactured.
- The antistatic urethane wheel having wheel diameter of φ 100 can be manufactured.

Wheel in use

Refer to P163 for detailed specifications.



R RH Rubber wheel

NR Rubber wheel with nylon wheel assembly

N Nylon wheel

UR Urethane wheel with nylon wheel assembly

EL Elastomer wheel