

# HR TYPE



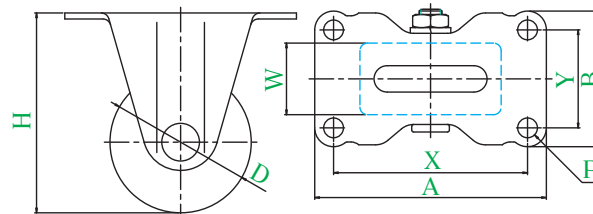
Fixed wheel



Plate type



HR-75PB



● Description of product number

## HR - 75 PB

Wheel type  
Wheel diameter  
Bracket type

Bracket = Trivalent unichrome coating

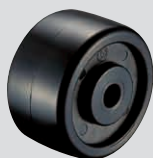
Product number	Wheels								
		Wheel diameter D(mm)	Wheel width W(mm)	Mounting height H(mm)	Mounting base A × B(mm)	Mounting dimensions X × Y(mm)	Hole diameter P(mm)	Allowance load daN(kgf)	Wheel weight (g)
HR-50	GNB Reinforced nylon wheel	50	28	68	80 × 50	66 × 36	6.5	160(163.2)	195
	MC MC nylon wheel		25					160(163.2)	200
	MCE MC nylon wheel (conductive)		25					160(163.2)	200
HR-65	PB Phenol wheel (including B)	65	38	92	111 × 67	91 × 47	10.5	300(306.0)	630
	GNB Reinforced nylon wheel (including B)							300(306.0)	575
	MC MC nylon wheel (including B)							300(306.0)	595
	MCE MC nylon wheel (including B) (conductive)							300(306.0)	595
HR-75	PB Phenol wheel (including B)	75	38	106	123 × 72	103 × 52	10.5	320(326.4)	730
	GNB Reinforced nylon wheel (including B)							320(326.4)	665
	MC MC nylon wheel (including B)							320(326.4)	700
	MCE MC nylon wheel (including B) (conductive)							320(326.4)	700

### Wheel in use

Refer to P159 for detailed specifications.



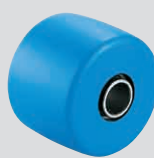
PB Phenol wheel (including B)



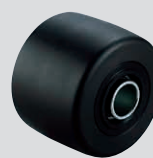
GNB Reinforced nylon wheel



GNB Reinforced nylon wheel (including B)



MC MC nylon wheel (including B)



MCE MC nylon wheel (including B) (conductive)

- J
- PM
- J2
- RJ2
- SJ
- S
- E
- G
- L
- SA
- H**
- CAL -H
- M
- PL
- Silence
- SUS -J2
- SUS -SJ
- SUS -S
- SUS -E
- SUS -H
- P
- SKY
- Equipped with adjuster foot
- Special
- Easy lock
- Wheels