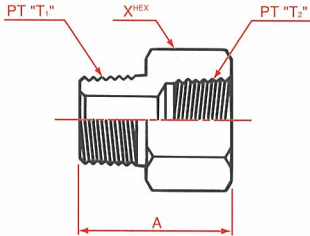


## 2040

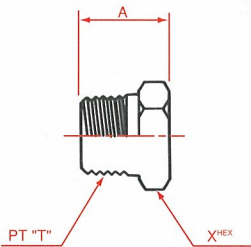
オス・メス ニップル  
Male female nipple  
External pipe/Internal pipe



呼称サイズ	T <sub>1</sub>	T <sub>2</sub>	A	X
02	1/8	1/8	25	17
02-04	1/8	1/4	27	19
04	1/4	1/4	30	19
04-06	1/4	3/8	32	22
04-08	1/4	1/2	35	27
06	3/8	3/8	34	22
06-08	3/8	1/2	37	27
08	1/2	1/2	40	27
08-12	1/2	3/4	42	36
12	3/4	3/4	45	36
12-16	3/4	1	47	41
16	1	1	49	41
16-20	1	1 1/4	55	50

## 2082

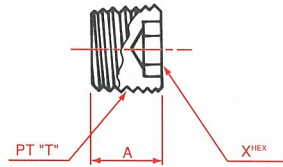
盲プラグ  
Plug (External pipe/plug)



呼称サイズ	T	A	X
02	1/8	17	14
04	1/4	21	17
06	3/8	22	19
08	1/2	26	24
12	3/4	29	30
16	1	32	36

## 2070

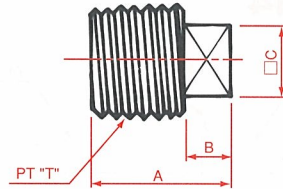
沈みプラグ (六角穴付)  
Sunk plug (External pipe/plug)



呼称サイズ	T	A	X
02	1/8	7	5
04	1/4	10	6
06	3/8	10	8
08	1/2	13.5	10
12	3/4	14	14
16	1	17.5	17

## 2071

四頭プラグ  
Squarish plug  
External pipe/plug



呼称サイズ	T	A	B	□C
02	1/8	15	7	7
04	1/4	19	8	9
06	3/8	21	9	12
08	1/2	25	10	14
12	3/4	28	11	17
16	1	31	12	19