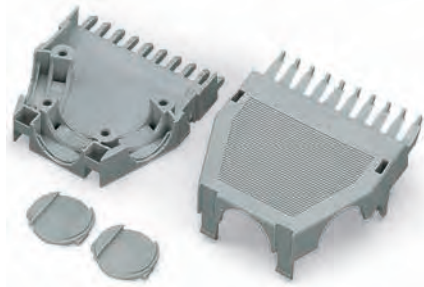


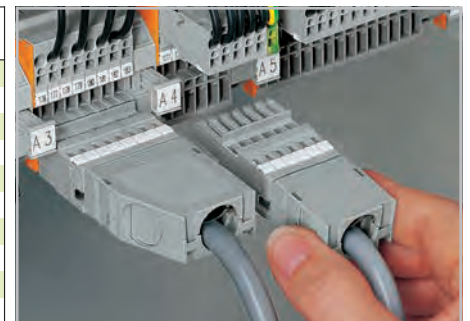
Snap-on Type Strain Relief Housings for 769 Series Female Plugs and Male Connectors with CAGE CLAMP® Connection

Snap-on type relief housing	Snap-on type relief housing
-----------------------------	-----------------------------



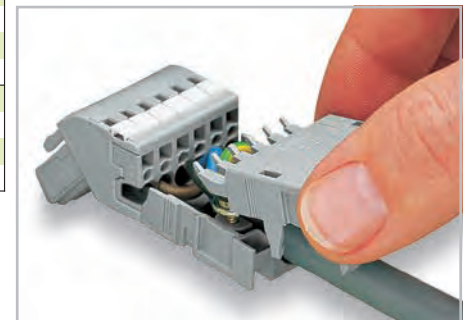
- ❶ 1 cable outlet rear, 2- ... 5-pole only suitable for cable ties (Fa. Hellermann - not offered by WAGO) not for cable clamp
- ❷ 1 cable outlet rear
- ❸ 2 cable outlets, 1 cover
- ❹ 3 cable outlets, 2 covers

Pole No.	Item No.	Pack. Unit	Pole No.	Item No.	Pack. Unit
Snap-on type relief housing , consisting of strain relief support/housing, gray			Snap-on type relief housing , consisting of strain relief support/housing, gray		
2	769-1602	❶ 25	6	769-1606	❷ 25
3	769-1603	❶ 25	7	769-1607	❷ 25
4	769-1604	❶ 25	8	769-1608	❸ 25
5	769-1605	❶ 25	9	769-1609	❸ 25
			10	769-1610	❹ 25
			11	769-1611	❹ 25
			12	769-1612	❹ 25
			13	769-1613	❹ 25
			14	769-1614	❹ 25
			15	769-1615	❹ 25



Application

Item-Specific Accessories			Item-Specific Accessories		
WSB Quick marking system , 10 strips with 10 markers per card, for terminal widths 5 ... 17.5 mm plain 209-501 5			Cable clamp , for strain relief for 7 or more poles 209-174 25		
			Fixing screw , for cable clamp for 7 or more poles 209-173 50		



Snapping on strain relief housing

Dimensions for strain relief housings		pole no.	L1	L2	L3	L4	L5	D
		2	71.7	76.7	64.4	10	31.5	5
		3	71.7	76.7	64.4	15	31.5	9.7
		4	71.7	76.7	64.4	20	31.5	14
		5	71.7	76.7	64.4	25	31.5	14
		6	71.7	76.7	64.4	30	31.5	15.5
		7	77.7	81.7	69.4	35	36.5	15.5
		8	86.2	91.2	78.9	40	46	15.5
		9	86.2	91.2	78.9	45	46	15.5
		10	86.2	91.2	78.9	50	46	15.5
		11	86.2	91.2	78.9	55	46	15.5
		12	86.2	91.2	78.9	60	46	15.5
		13	86.2	91.2	78.9	65	46	15.5
		14	86.2	91.2	78.9	70	46	15.5
		15	86.2	91.2	78.9	75	46	15.5

Dimensions in mm