


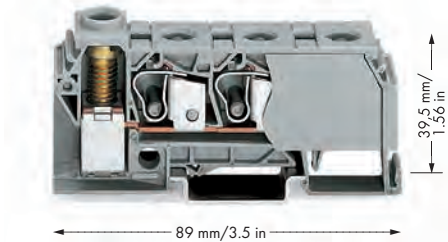
# Distribution Terminal blocks 3 x 10 mm<sup>2</sup> CAGE CLAMP® Connection and 1 x 35 mm<sup>2</sup> Screw-Clamp Connection 284 Series




0.2 ... 10 mm<sup>2</sup> ① AWG 24 ... 8  
 6 ... 35 mm<sup>2</sup> ② AWG 10 ... 2  
 800 V/8 kV/3 ③  
 I<sub>N</sub> 125 A  
 Terminal block width 17.5 mm / 0.689 in.  
 12 ... 14 mm / 0.51 in. ④

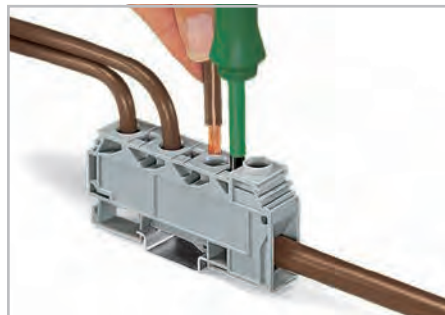


Terminating a 35 mm<sup>2</sup>/AWG 2 conductor. Screw-clamp connection, side-entry wiring.

- ① CAGE CLAMP® connection
- ② Screw-clamp connection
- ③ 800 V = rated voltage  
8 kV = rated surge voltage  
3 = pollution degree  
(also see Section 14)
- ④ Strip length, see packaging or instructions.
- ⑤ Individual arrangement: 125 A  
Two jumpers combined in one clamping unit: 100 A



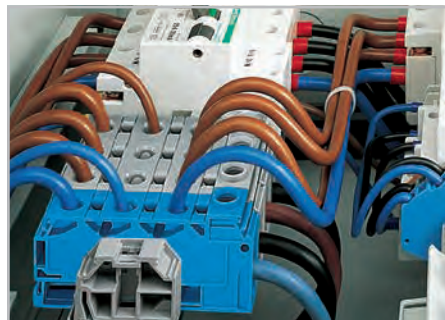
Item No.	Pack. Unit
<b>Distribution terminal block,</b>	
with 3 x CAGE CLAMP® connection 10 mm <sup>2</sup> and 1 x screw-clamp connection 35 mm <sup>2</sup> ,	
Screw torque: 3.5 Nm	
○ gray	284-621 15
● blue	284-624 15
<b>Accessories for Distribution Terminal Blocks</b>	
Appropriate marking system: WMB	
<b>Comb-style jumper bar, insulated,</b>	
⑤ 	I <sub>N</sub> 125 A for 1 jumper, I <sub>N</sub> 100 A for 2 jumpers
gray	284-412 100 (4x25)
<b>Screwless end stop,</b>	
for DIN 35 rail, 6 mm wide	
	gray 249-116 100 (4x25)
<b>Screwless end stop,</b>	
for DIN 35 rail, 10 mm wide	
	gray 249-117 50 (2x25)



Terminating a 10 mm<sup>2</sup>/AWG 8 conductor CAGE CLAMP® connection, front-entry wiring.



Commoning with comb-style jumper bar.



Rail-mounted distribution terminal block with 35 mm<sup>2</sup>/AWG 2 screw-clamp connection (front-entry) and 3 x 10 mm<sup>2</sup>/AWG 8 front-entry CAGE CLAMP® connection. Snaps onto DIN 35 carrier rails per EN 60675. The terminal block enclosed on both sides, an end or intermediate plate is not necessary.

**In case of maximum wiring with 3 x 10 mm<sup>2</sup>/AWG 8 on the distribution side the nominal current of 125A shall not be exceeded.**