

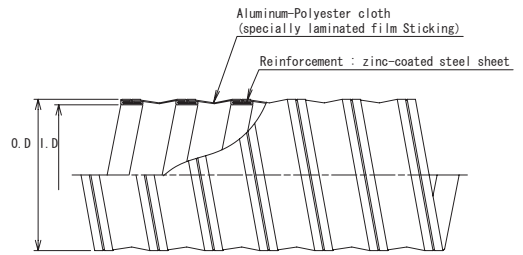
Allowable pressure does not mean the maximum working pressure.
In designing the operation, please adopt the working pressure in consideration of the contents described in the table on Page 3.

All data contained in this catalog is the value obtained when the hose is placed in a straight form.
(Note) Allowable decompression power of duct hose means the value that both ends of the duct hose is fixed at straight condition.
Allowable pressure, etc. may be changed depending on the assortment of coupling and bands, use temperature and bending condition, to which please pay your attention.

TOTAKU IT-13 (Free installation)

Item No.21180-

※ Permissible Highest Temperature for continuous use: 130°C or less.



Features.

- Made of aluminum-polyester cloth and zinc -coated steel sheet, and is usable at the temperature of 130°C or less.
- Specially laminated film is used, which reduces dusts being generated by surface friction.
- Retractable, and easy storage and transportation.

Applications.

- For blowing and exhausting use, where smaller amount of dusts raising is required such as the clean-room.
- For air-intake and exhaust of hot air generator.

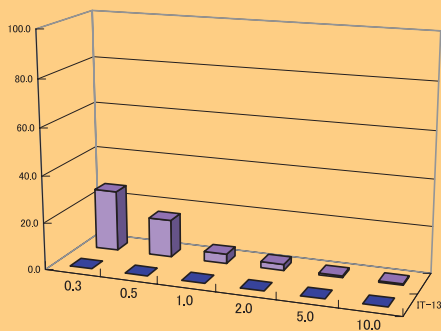
※ Very little dust-raising material is used for this duct. However, your specific check on dust-raising is required before actual use since an amount of dusts is variable depending on use conditions (such as fluid substance, temperature and pressure).

STANDARD DIMENSIONS & PROPERTIES

Nominal diameter	I.D.	O.D.	Weight (reference)	L/coil	Allowable pressure (at room temperature)		Allowable decompression power (at room temperature)		Allowable bending radius	
					MPa	kgf/cm ²	kPa	mmHg		
50	1½	51.0	54.5	365	5	0.007	0.07	-8.5	-64	120
65	2½	67.5	71.5	445	5	0.007	0.07	-8.0	-60	140
75	3	76.0	80.0	520	5	0.007	0.07	-7.0	-53	160
100	4	102.5	106.0	630	5	0.007	0.07	-6.5	-49	210
125	5	127.5	131.0	755	5	0.007	0.07	-6.5	-49	250
150	6	152.0	155.0	925	5	0.007	0.07	-6.0	-45	300
175	7	176.5	180.0	1050	5	0.007	0.07	-5.0	-38	300
200	8	202.0	205.0	1225	5	0.007	0.07	-4.5	-34	400
250	10	253.0	256.0	1550	5	0.007	0.07	-3.0	-23	600
300	12	303.0	306.0	1840	5	0.007	0.07	-3.0	-23	600

Dust-Amount Comparison

Dust amount (piece/cf) Dust-Amount Comparison



■ IT-13

■ Standard heat-resistant duct

※ The above data is the actual measurement, not the guarantee value.

Test Condition

Test Piece

TOTAKU IT-13 ø50
Standard heat-resistant duct ø50

Washing method

Clean air washing

Measuring method

Test piece of 30cm long placed on the bench (Class100) in the cleanroom is stretched and contracted for one minute. Then, measure an amount of dusts raised.

Measuring instrument

Made by American Climet Instrument Company

Laser particle counter

(JQA) official approval items MODEL

•CI-500 light source

The laser diode sample flow rate•1CF/Min
Counts 0.3, 0.5, 1, 2, 5 and 10 micron particles at 1 CFM.

