

## Coin Battery Contact Installation Step

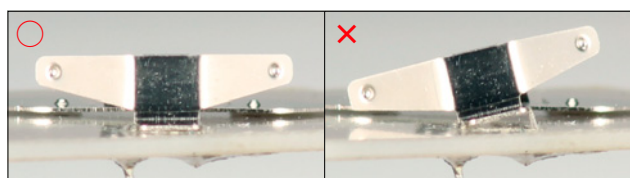


- Exclusive PCB are prepared as the optional parts. See page 44 for the details.  
Please use the figure of dimensions and screw hole layout on page 8 for your original PCB as well.

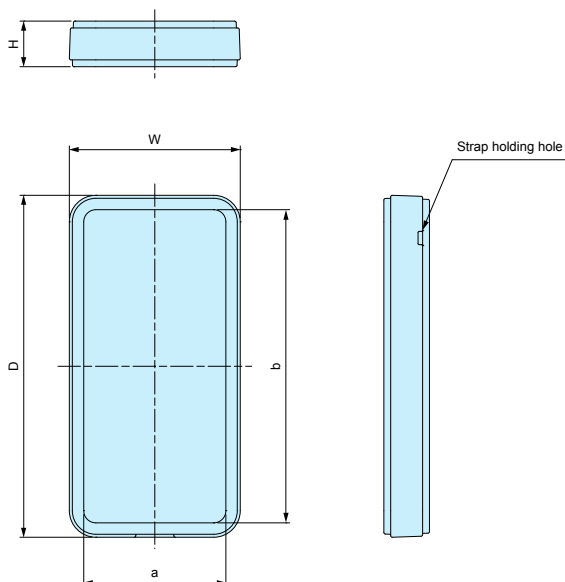


Stick CR2032 sticker on the backside of the battery cover to mention the right direction to set.

**NOTE** • Be aware of the mount position of the battery contact.



### CS dimensions



**NEW**

**NEW**

No battery compartment CS75N/90N/115N	CR2032 × 1 CS75/CS90	CR2032 × 2 CS115

### Color Type

Color code	Color
W	White
B	Black

### Part no. / Dimensions

• Please suffix color code at the end of part number □ when ordering CS series.

Part no.	W	H	D	a	b	Battery compartment	Weight (g)
<b>NEW</b> CS75N -□	35	12	75	28.4	68.4	None	12
CS75 -□	35	12	75	28.4	68.4	CR2032 × 1	13
<b>NEW</b> CS90N -□	45	12	90	37.4	82.4	None	18
CS90 -□	45	12	90	37.4	82.4	CR2032 × 1	20
<b>NEW</b> CS115N -□	63	12	115	55.4	107.4	None	30
<b>NEW</b> CS115 -□	63	12	115	55.4	107.4	CR2032 × 2	33