

Push-Pull Circular Connectors

PRC05 series / PRC07 series

- PRC05 series are smaller than the PRC03, PRC04 series, they are our original Push-Pull Locking connectors for quick and easy connection.
- PRC07 series based on PRC05 series feature high density and miniaturization.

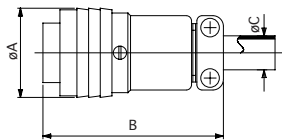
Specifications

Connections	Push-Pull Lock
Termination	Solder
Temperature and Humidity	-25°C to +85°C 85% Max.
Number of Pins	2, 3, 5, 6, 8, 12
Shell Material / Finish	Brass / Nickel
Contact Material / Finish	Copper Alloy / Gold over Nickel

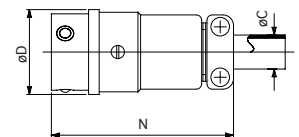
* See page 28 as for Electrical Specifications.



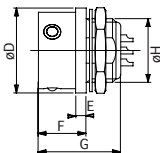
Plug
PRC05-PSF



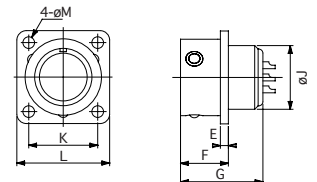
Jack
PRC05-J5M



Bulkhead Mount Receptacle
PRC05-R5M



Flange Mount Receptacle
PRC05-RB5M



Configuration

Insert Size	No. of Pins	Dimensions (mm)													
		A	B	C	D	E	F	G	H	J	K	L	M	N	
6	2, 3, 5	13.5	32.0	5.2	13.0	2.0	9.5	18.0	9.0 P=0.5	9.0	11.5	16.0	2.2	32.5	
9	6, 8	16.7	34.0	6.2	16.0	2.0	9.5	18.0	12.0 P=0.8	12.0	13.5	18.0	2.2	34.5	
12	12	21.0	39.0	11.0	20.0	2.0	9.5	18.0	M16 P=1.0	16.0	17.0	22.5	2.8	39.0	