

MC (for Stainless steel castors)

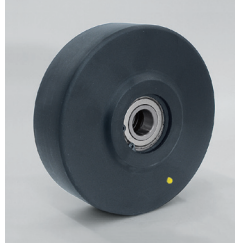
- Tire Monomer cast nylon
- Wheel center -
- Bearing **(NBS)** Stainless steel needle bearing
- Operating temp. -40°C~+120°C (temporarily ~+150°C)
- Hardness (R) 115-120
- Characteristics Chemical, oil and wearing resistance.
- Applicable to Castors on P.41



MC-100SU (NBS)	100	29	42	10	150 (1470)
MC-125SU (NBS)	125	42	56	12	210 (2050)
MC-150SU (NBS)	150	42	56	12	250 (2450)

MCD (for Electrically conductive castors steel type)

- Tire Conductive monomer cast nylon (Black)
- Wheel center -
- Bearing **(JBB)** Radial ball bearing
- Operating temp. -40°C~+120°C (temporarily ~+150°C)
- Hardness (R) 115-120
- Volume resistance $10^2 \sim 10^4 \Omega \cdot \text{cm}^*$
- Characteristics Chemical, oil and wearing resistance.
- Applicable to Castors on P.35



MCD-75VB (JBB)	75	32	35	10	120 (1170)
MCD-100VB (JBB)	100	35	38	12	180 (1760)
MCD-130VB (JBB)	130	42	50	20	250 (2450)
MCD-150VB (JBB)	150	45	52	20	300 (2940)
MCD-200VB** (JBB)	200	45	54	20	400 (3920)

**MCD-200VB: upon request.

MCD (for Electrically conductive castors stainless steel type)

- Tire Conductive monomer cast nylon (Black)
- Wheel center -
- Bearing **(NBS)** Stainless steel needle bearing
- Operating temp. -40°C~+120°C (temporarily ~+150°C)
- Hardness (R) 115-120
- Volume resistance $10^2 \sim 10^4 \Omega \cdot \text{cm}^*$
- Characteristics Chemical, oil and wearing resistance.
- Applicable to Castors on P.37



MCD-75SU (NBS)	75	25	30	8	70 (680)
MCD-100SU (NBS)	100	29	42	10	150 (1470)
MCD-125SU (NBS)	125	42	56	12	210 (2050)
MCD-150SU (NBS)	150	42	56	12	250 (2450)
MCD-200SU**	200	50	60	12	350 (3430)

**MCD-200SU: with stainless steel bushing. (w/o bearing)
**MCD-200SU: upon request.

MCD (for Compact heavy duty castors)

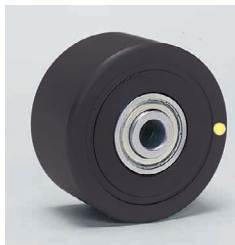
- Tire Conductive monomer cast nylon (Black)
- Wheel center -
- Bearing **(JBB)** Radial ball bearing
- Operating temp. -40°C~+120°C (temporarily ~+150°C)
- Hardness (R) 115-120
- Volume resistance $10^2 \sim 10^4 \Omega \cdot \text{cm}^*$
- Characteristics Chemical, oil and wearing resistance.
- Applicable to Castors on P.39



MCD-50HW (JBB)	50	32.5	35.5	8	300 (2940)
MCD-65HW (JBB)	65	36	39	10	400 (3920)
MCD-75HW (JBB)	75	39	42	10	500 (4900)

MCD (for Stainless steel compact heavy duty castors)

- Tire Conductive monomer cast nylon (Black)
- Wheel center -
- Bearing **(SJB)** Stainless steel radial ball bearing
- Operating temp. -40°C~+120°C (temporarily ~+150°C)
- Hardness (R) 115-120
- Volume resistance $10^2 \sim 10^4 \Omega \cdot \text{cm}^*$
- Characteristics Chemical, oil and wearing resistance.
- Applicable to Castors on P.39



MCD-50HWSU (SJB)	50	32.5	35.5	8	300 (2940)
MCD-65HWSU (SJB)	65	36	39	10	400 (3920)
MCD-75HWSU (SJB)	75	39	42	10	500 (4900)

MCD (for Twin wheeled compact heavy duty castors)

- Tire Conductive monomer cast nylon (Black)
- Wheel center -
- Bearing **(JBB)** Radial ball bearing
- Operating temp. -40°C~+120°C (temporarily ~+150°C)
- Hardness (R) 115-120
- Volume resistance $10^2 \sim 10^4 \Omega \cdot \text{cm}^*$
- Characteristics Chemical, oil and wearing resistance.
- Applicable to Castors on P.9 P.21



MCD-50HWT (JBB)	50	15 × 2	36	8	300 (2940)
MCD-65HWT (JBB)	65	17 × 2	40	10	400 (3920)
MCD-75HWT (JBB)	75	18.5 × 2	43	10	500 (4900)