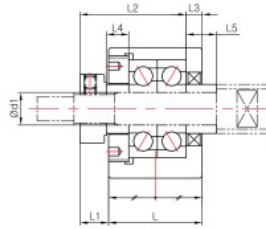
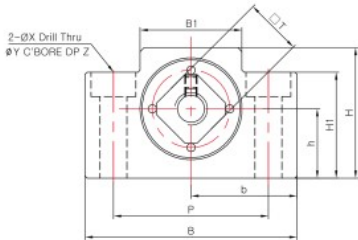


SUPPORT UNIT : BK SERIES

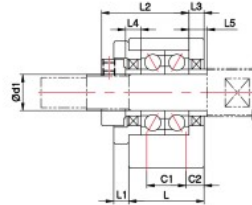
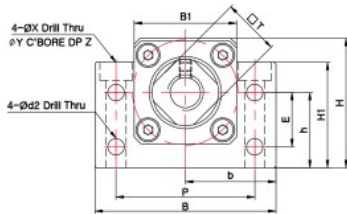


SUPPORT UNIT FOR BALL SCREW (GENERAL LOAD)

BK-6 ~ BK-8



BK-10 ~ BK-40



Dimensions

Model	Sizes (mm)																							Mass (g)
	Body																				Spacer(collar)			
	d1	L	L1	L2	L3	B	H	b±0.02	h±0.02	B1	H1	E	P	C1	C2	d2	X	Y	Z	□T	L4	L5		
BK-6	6	23	5	24	4	52	32	26	17	25	26	-	38	-	-	-	6.6	11	6	12	5	5	230	
BK-8	8	23	7	26	4	52	32	26	17	25	26	-	38	-	-	-	6.6	11	6	14	5.5	7.5	230	
BK-10	10	25	5	29	5	60	39	30	22	34	32.5	15	46	13	6	5.5	6.6	10.8	5	16	5	5	360	
BK-12	12	25	5	29	5	60	43	30	25	34	35	18	46	13	6	5.5	6.6	10.8	6	19	5	5	390	
BK-15	15	27	6	32	6	70	48	35	28	40	38	18	54	15	6	5.5	6.6	11	6	22	6	6	530	
BK-17	17	35	9	44	7	86	64	43	39	50	55	28	68	19	8	6.6	9	14	8.5	24	7	7	1,270	
BK-20	20	35	8	43	8	88	60	44	34	52	50	22	70	19	8	6.6	9	14	8.5	30	8	8	1,650	
BK-25	25	42	12	54	9	106	80	53	48	64	70	33	85	22	10	9	11	17.5	11	35	9	9	2,310	
BK-30	30	45	14	61	9	128	89	64	51	76	78	33	102	23	11	11	14	20	13	40	9	9	3,330	
BK-35	35	50	14	67	12	140	96	70	52	88	79	35	114	26	12	11	14	20	13	50	12	12	4,380	
BK-40	40	61	18	76	15	160	110	80	60	100	90	37	130	33	14	14	18	26	17.5	50	15	15	6,670	